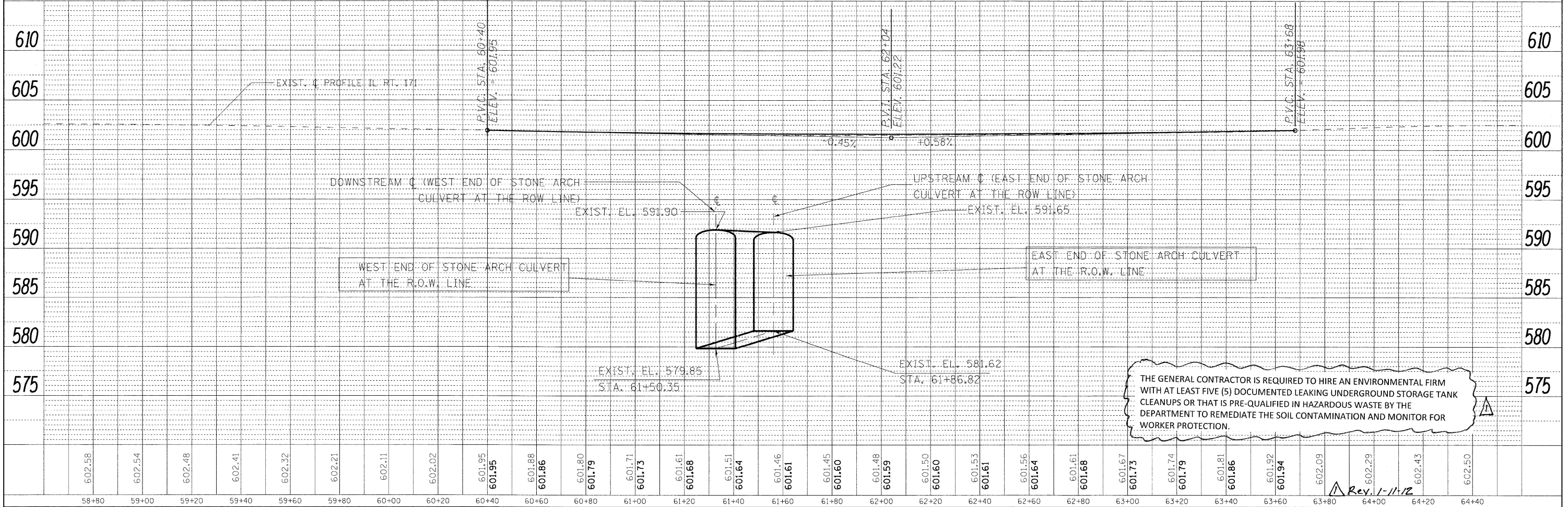
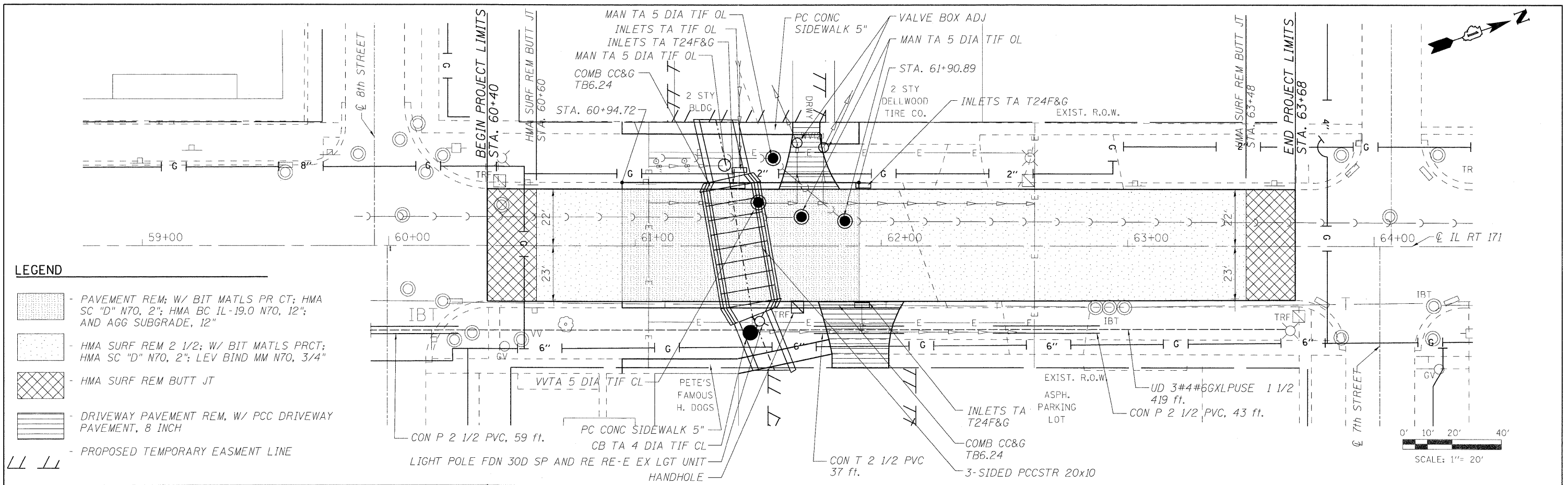


DATE: \_\_\_\_\_  
 SURVEYED: \_\_\_\_\_  
 ALIGNED: \_\_\_\_\_  
 CHECKED: \_\_\_\_\_  
 PLAN: \_\_\_\_\_  
 NOTE BOOK NO. \_\_\_\_\_  
 PART OF WAY CHECKED: \_\_\_\_\_  
 ROAD FILE NAME: \_\_\_\_\_

DATE: \_\_\_\_\_  
 SURVEYED: \_\_\_\_\_  
 GRADES CHECKED: \_\_\_\_\_  
 PROFILE: \_\_\_\_\_  
 NOTE BOOK NO. \_\_\_\_\_  
 STRUCTURE NOTATIONS: \_\_\_\_\_  
 CHKD: \_\_\_\_\_



602.58	602.54	602.48	602.41	602.32	602.21	602.11	602.02	601.95	601.95	601.88	601.86	601.80	601.79	601.71	601.73	601.61	601.68	601.51	601.64	601.46	601.61	601.45	601.60	601.48	601.59	601.50	601.60	601.53	601.61	601.56	601.64	601.61	601.68	601.67	601.73	601.74	601.79	601.81	601.86	601.92	601.94	602.09	602.29	602.43	602.50
58+80	59+00	59+20	59+40	59+60	59+80	60+00	60+20	60+40	60+60	60+80	61+00	61+20	61+40	61+60	61+80	62+00	62+20	62+40	62+60	62+80	63+00	63+20	63+40	63+60	63+80	64+00	64+20	64+40																	

**LOCO, INC.**  
 CONSULTING ENGINEERS  
 1560 WALL ST, SUITE 222  
 NAPERVILLE, ILLINOIS 60563 PH: (630) 577-9100

DESIGNED - ST	REVISED -
DRAWN - ST	REVISED -
CHECKED - MJY, SLV	REVISED -
DATE - 10/14/2011	REVISED -

**STATE OF ILLINOIS**  
**DEPARTMENT OF TRANSPORTATION**

**PLAN AND PROFILE**  
**IL ROUTE 171 OVER MILNE CREEK**

SCALE: NONE SHEET NO. 1 OF 1 SHEETS STA. 60+40 TO 63+68

F.A. RTE. 171	SECTION D-T	COUNTY WILL	TOTAL SHEETS 44	SHEET NO. 13
D-91-265-06		CONTRACT NO. 60B10		
ILLINOIS FED. AID PROJECT				

THE GENERAL CONTRACTOR IS REQUIRED TO HIRE AN ENVIRONMENTAL FIRM WITH AT LEAST FIVE (5) DOCUMENTED LEAKING UNDERGROUND STORAGE TANK CLEANUPS OR THAT IS PRE-QUALIFIED IN HAZARDOUS WASTE BY THE DEPARTMENT TO REMEDIATE THE SOIL CONTAMINATION AND MONITOR FOR WORKER PROTECTION.