

ROUTE MARKERS

FOR U.S. ROUTES
M1-40-2424

FOR ILLINOIS ROUTES
M1-50-2424

R.R. UNMARKED ROUTES
SPECIAL 24" x 18" VARIABLE
4" BLACK LETTERS ON WHITE
REFLECTIVE BACKGROUND

ARROWS SIGNS

M5-1L-2115

M5-1R-2115

M6-1-2115

M6-1-2115

M6-3-2115

CARDINAL DIRECTION & DETOUR SIGNS

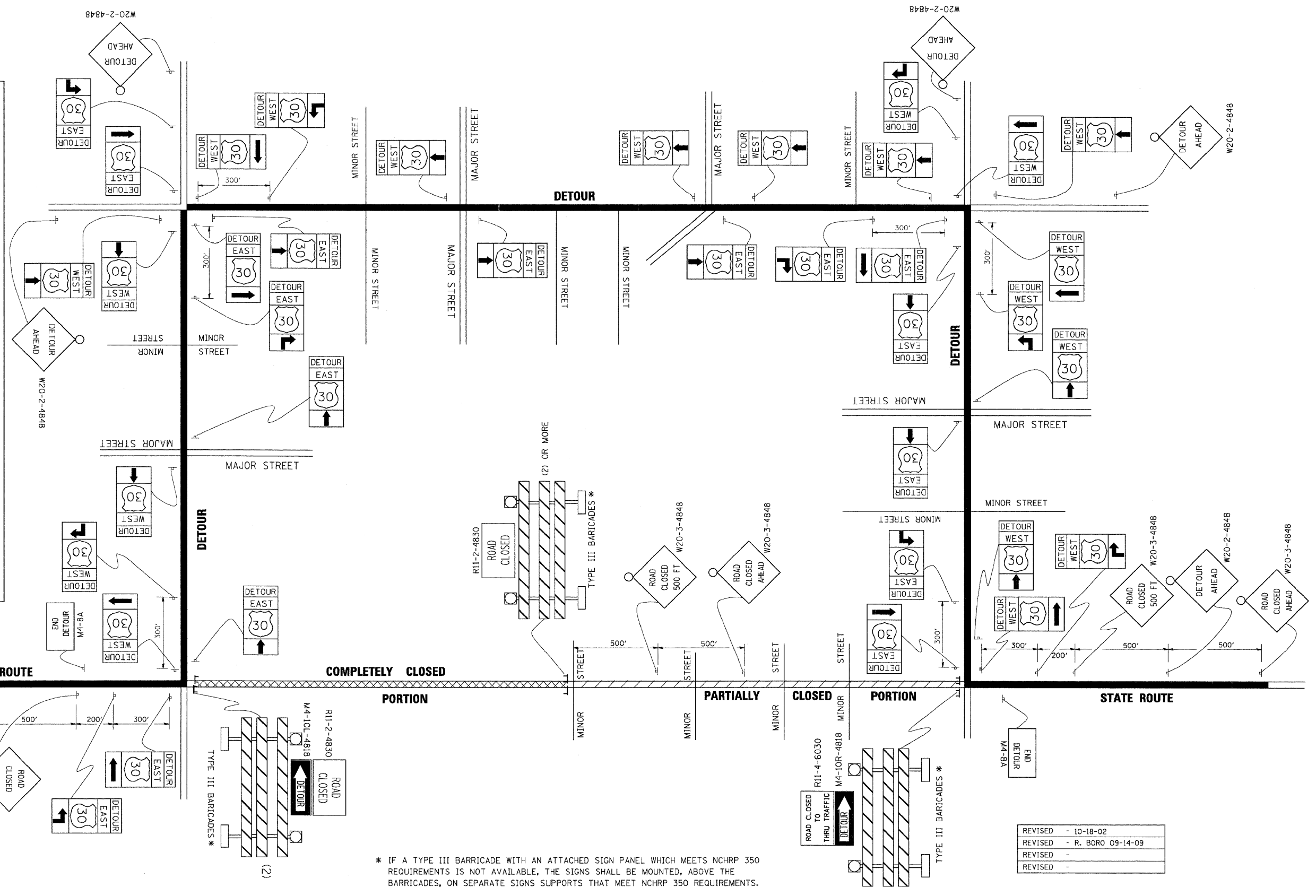
NORTH M3-1-2412

EAST M3-2-2412

SOUTH M3-3-2412

WEST M3-4-2412

DETOUR M4-8-2412



* IF A TYPE III BARRICADE WITH AN ATTACHED SIGN PANEL WHICH MEETS NCHRP 350 REQUIREMENTS IS NOT AVAILABLE, THE SIGNS SHALL BE MOUNTED, ABOVE THE BARRICADES, ON SEPARATE SIGNS SUPPORTS THAT MEET NCHRP 350 REQUIREMENTS.

DETOUR SIGNING FOR CLOSING STATE HIGHWAYS

REVISED	- 10-18-02
REVISED	- R. BORO 09-14-09
REVISED	-
REVISED	-

LOVCO, INC.
CONSULTING ENGINEERS
1560 BALL ST., SUITE 222
NAPERVILLE, ILLINOIS 60563 PH: (630) 577-9100

DESIGNED	- SLV	REVISED	-
DRAWN	- SLV	REVISED	-
CHECKED	- MJY, ST	REVISED	-
DATE	- 10/14/2011	REVISED	-

**STATE OF ILLINOIS
DEPARTMENT OF TRANSPORTATION**

**DISTRICT ONE DETAIL SHEETS
IL ROUTE 171 OVER MILNE CREEK**

SCALE: SHEET NO. 10 OF 12 SHEETS STA. 60+40 TO STA. 63+68

F.A.P. RTE.	SECTION	COUNTY	TOTAL SHEETS	SHEET NO.
577	D-T	WILL	44	42
D-91-265-06		CONTRACT NO. 60B10		
FED. ROAD DIST. NO.		ILLINOIS FED. AID PROJECT		