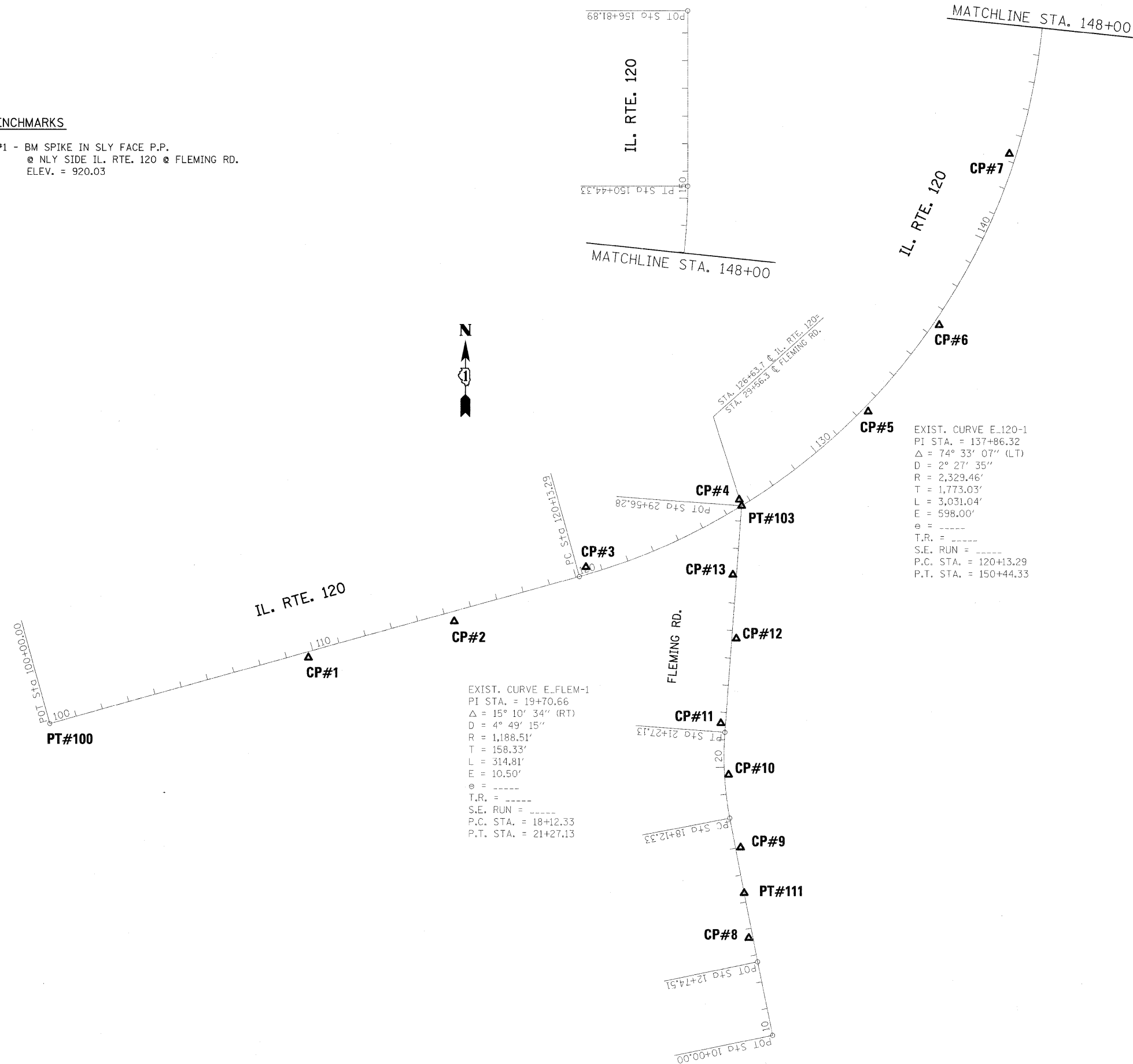


BENCHMARKS

BM#1 - BM SPIKE IN SLY FACE P.P.
 @ NLY SIDE IL. RTE. 120 @ FLEMING RD.
 ELEV. = 920.03



EXIST. CURVE E-FLEM-1
 PI STA. = 19+70.66
 Δ = 15° 10' 34" (RT)
 D = 4° 49' 15"
 R = 1,188.51'
 T = 158.33'
 L = 314.81'
 E = 10.50'
 e = -----
 T.R. = -----
 S.E. RUN = -----
 P.C. STA. = 18+12.33
 P.T. STA. = 21+27.13

EXIST. CURVE E-120-1
 PI STA. = 137+86.32
 Δ = 74° 33' 07" (LT)
 D = 2° 27' 35"
 R = 2,329.46'
 T = 1,773.03'
 L = 3,031.04'
 E = 598.00'
 e = -----
 T.R. = -----
 S.E. RUN = -----
 P.C. STA. = 120+13.29
 P.T. STA. = 150+44.33

FILE NAME = P113707-shr-ATB.dgn	USER NAME = bauerd	DESIGNED -	REVISED -	STATE OF ILLINOIS DEPARTMENT OF TRANSPORTATION	IL. ROUTE 120 AT FLEMING RD. ALIGNMENT, TIES AND BENCHMARKS			F.A.P. RTE. 333	SECTION 15-N-06	COUNTY MCHENRY	TOTAL SHEETS 67	SHEET NO. 10
	PLOT SCALE = 200,0000' / IN.	DRAWN -	REVISED -		SCALE: 1" = 200'	SHEET NO.	OF	SHEETS	STA.	TO STA.	CONTRACT NO. 60L27	
	PLOT DATE = 4/29/2011	CHECKED -	REVISED -		ILLINOIS FED. AID PROJECT							