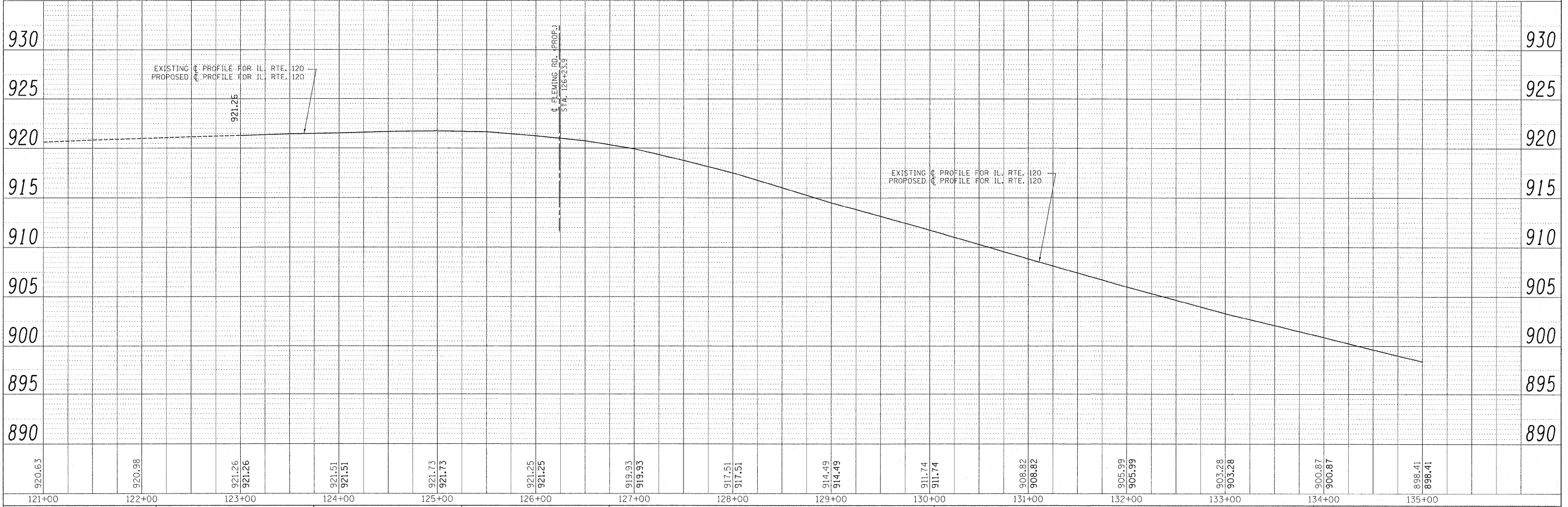
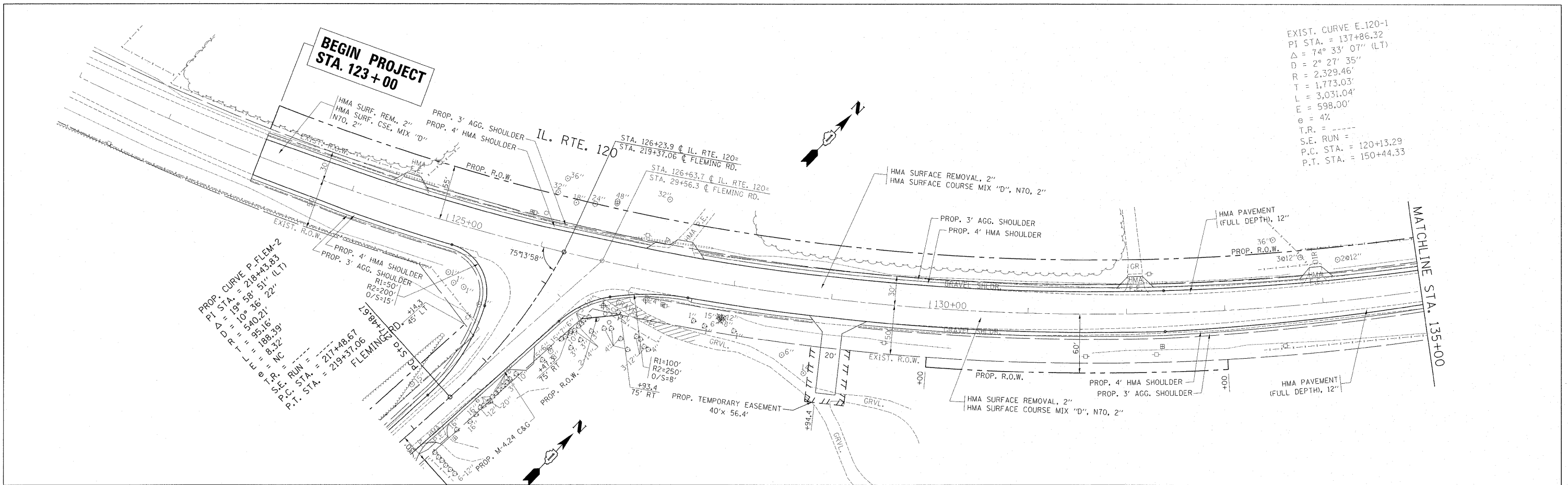


FILE	DATE
BY	
DESIGNED	
DRAWN	
CHECKED	
DATE	

FILE	DATE
BY	
DESIGNED	
DRAWN	
CHECKED	
DATE	



920.63	920.98	921.26	921.26	921.51	921.51	921.73	921.73	921.25	921.25	919.93	919.93	917.51	917.51	914.49	914.49	911.74	911.74	908.82	908.82	905.99	905.99	903.28	903.28	900.87	900.87	898.41	898.41
121+00	122+00	123+00	124+00	125+00	126+00	127+00	128+00	129+00	130+00	131+00	132+00	133+00	134+00	135+00													

FILE NAME = P113707-sht-plnprf.dgn	USER NAME = galbanjr	DESIGNED -	REVISED -	STATE OF ILLINOIS DEPARTMENT OF TRANSPORTATION	ROADWAY PLAN & PROFILE IL. ROUTE 120 FLEMING ROAD				F.A.P. RTE. = 333	SECTION = 15-N-6	COUNTY = MCHENRY	TOTAL SHEETS = 67	SHEET NO. = 12
PLOT SCALE = 50.0000' / 1"	CHECKED -	REVISED -	REVISED -		SCALE: 1"=50'	SHEET NO. OF SHEETS	STA. 123+00 TO STA. 135+00	FED. ROAD DIST. NO. ILLINOIS FED. AID PROJECT		CONTRACT NO. 60L27			
PLOT DATE = 9/7/2011	DATE -	REVISED -	REVISED -										