

STATE OF ILLINOIS  
DEPARTMENT OF TRANSPORTATION  
DIVISION OF HIGHWAYS

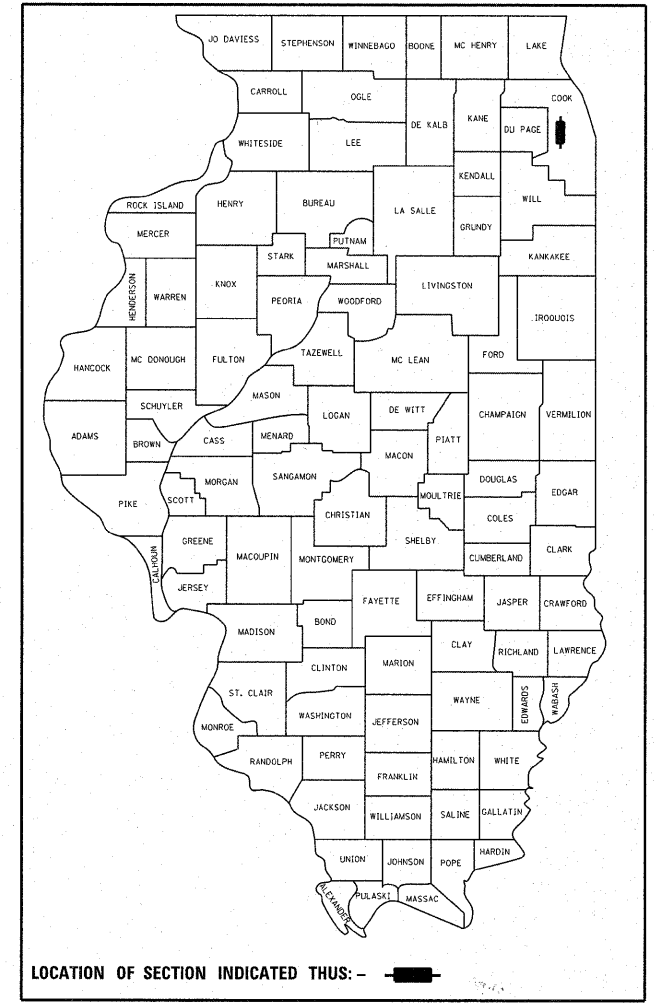
F.A.P. RTE.	SECTION	COUNTY	TOTAL SHEETS	SHEET NO.
348	2010-090-RS	COOK	55	1
FED. ROAD DIST. NO. 1	ILLINOIS	CONTRACT NO.	60L86	

FOR INDEX OF SHEETS, SEE SHEET NO. 2

# PROPOSED HIGHWAY PLANS

F.A.P. 348: IL ROUTE 43 (HARLEM AVE.)  
26TH STREET TO CULLOM AVENUE  
SECTION: 2010-090-RS  
RESURFACING (3P)

D-91-053-11



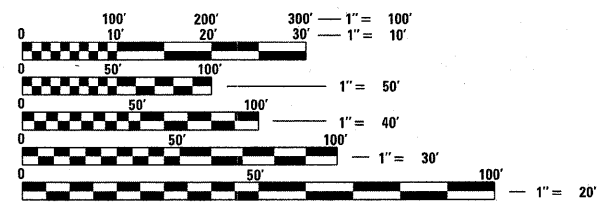
LOCATION OF SECTION INDICATED THIS: - [black rectangle] -

PROJECT IS LOCATED IN THE CITIES OF CHICAGO AND BERWYN AND IN THE VILLAGES OF RIVERSIDE, FOREST PARK, OAK PARK, RIVER FOREST, ELMWOOD PARK, AND NORRIDGE

COOK COUNTY  
C-91-053-11

**TRAFFIC DATA:**

2009 ADT = 30,700 - 39,500  
SPEED LIMIT = 25 - 35 MPH



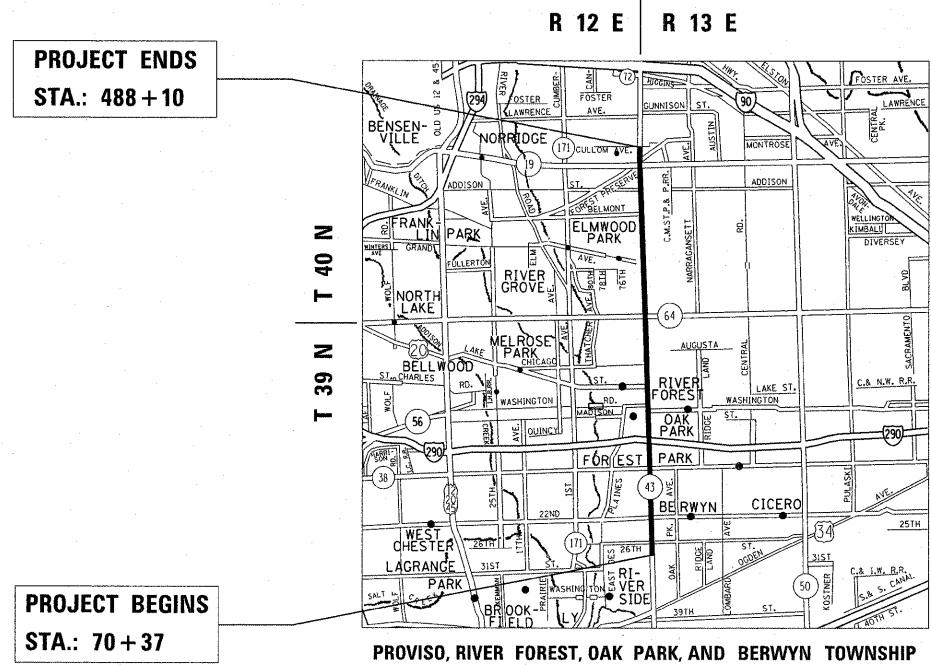
FULL SIZE PLANS HAVE BEEN PREPARED USING STANDARD ENGINEERING SCALES. REDUCED SIZED PLANS WILL NOT CONFORM TO STANDARD SCALES. IN MAKING MEASUREMENTS ON REDUCED PLANS, THE ABOVE SCALES MAY BE USED.

C.U.A.N.  
CHICAGO UTILITY ALERT NETWORK  
1-312-744-7000

J.U.L.I.E.  
JOINT UTILITY LOCATION INFORMATION FOR EXCAVATION  
1-800-892-0123  
OR 811

PROJECT ENGINEER: JENPAI CHANG (847) 705-4432  
PROJECT MANAGER: KEN ENG (847) 705-4247

CONTRACT NO. 60L86



PROJECT ENDS  
STA.: 488 + 10

PROJECT BEGINS  
STA.: 70 + 37

OMISSIONS:  
STA. 182+56 TO STA. 185+97  
STA. 232+11 TO STA. 234+37  
STA. 238+23 TO STA. 239+09  
STA. 314+28 TO STA. 472+70  
STA. 475+44 TO STA. 480+41

GROSS LENGTH OF PROJECT = 41773 FEET = 7.91 MILES  
NET LENGTH OF PROJECT = 24781 FEET = 4.69 MILES

STATE OF ILLINOIS  
DEPARTMENT OF TRANSPORTATION  
DIVISION OF HIGHWAYS

SUBMITTED OCTOBER 17, 20 11

Diana M. O'Keefe  
DEPUTY DIRECTOR OF HIGHWAYS, REGION ENGINEER

December 9, 20 11  
Scott E. Stitt, P.E.  
ACTING ENGINEER OF DESIGN AND ENVIRONMENT

December 9, 20 11  
William R. Freyer  
DIRECTOR OF HIGHWAYS, CHIEF ENGINEER

PRINTED BY THE AUTHORITY  
OF THE STATE OF ILLINOIS

Rev. 1-5-12