

STATE OF ILLINOIS
DEPARTMENT OF TRANSPORTATION
DIVISION OF HIGHWAYS

**PROPOSED
HIGHWAY PLANS**

F.A.P. ROUTE 374 (IL 21)
EUCLID AVE. TO GLENVIEW RD.
SECTION 211K-RS-1
PROJECT: NHF-0374(014)
RESURFACING (3P)
COOK COUNTY
C-91-074-11

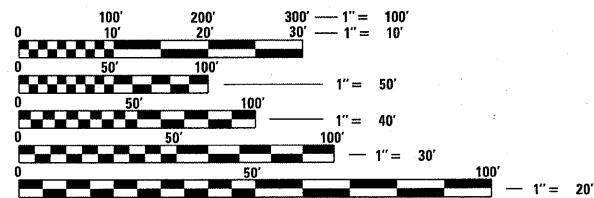
F.A.P. RTE.	SECTION	COUNTY	TOTAL SHEETS	SHEET NO.
374	211K-RS-1	COOK	27	1
		ILLINOIS	CONTRACT NO. 60M07	

FOR INDEX OF SHEETS, SEE SHEET NO. 2

THIS PROJECT IS LOCATED
IN THE VILLAGE OF GLENVIEW

TRAFFIC DATA:

ADT (EUCLID AVE. TO I-294) = 34,800 (2007)
ADT (I-294 TO GLENVIEW RD.) = 28,600 (2009)
SPEED LIMIT = 35-45 MPH

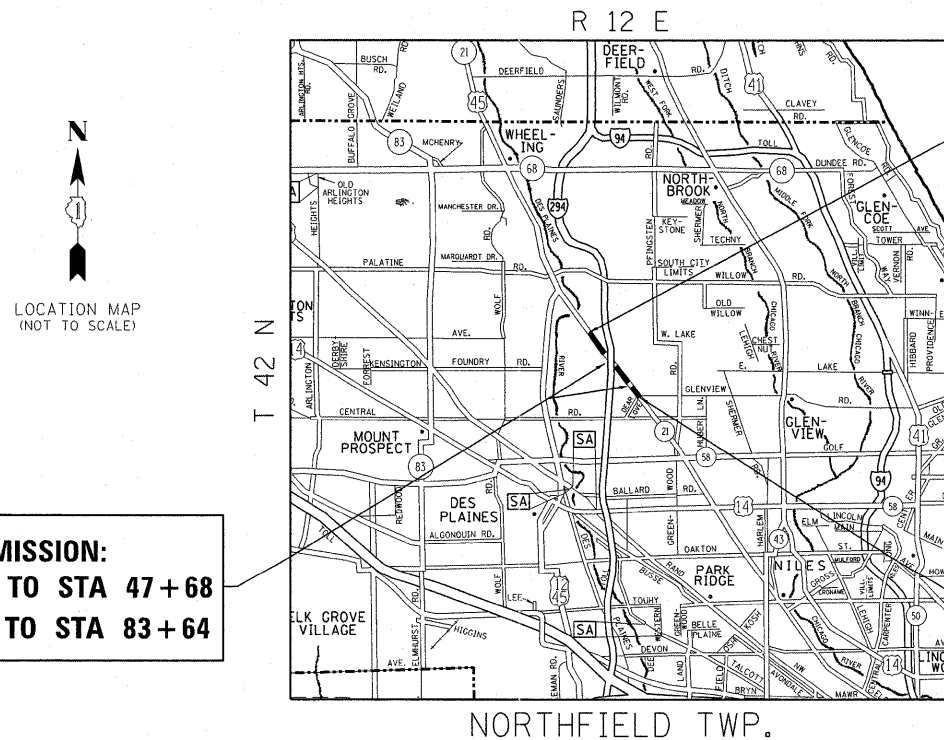


FULL SIZE PLANS HAVE BEEN PREPARED USING STANDARD ENGINEERING SCALES. REDUCED SIZED PLANS WILL NOT CONFORM TO STANDARD SCALES. IN MAKING MEASUREMENTS ON REDUCED PLANS, THE ABOVE SCALES MAY BE USED.

J.U.L.I.E.
JOINT UTILITY LOCATION INFORMATION FOR EXCAVATION
1-800-892-0123
OR 811

PROJECT ENGINEER: DAN WILGREEN (847) 705-4240
PROJECT MANAGER: KEN ENG (847) 705-4247

CONTRACT NO. 60M07



LOCATION MAP
(NOT TO SCALE)

OMISSION:
STA 39+21 TO STA 47+68
STA 81+11 TO STA 83+64

PROJECT BEGINS
STA 14+61

PROJECT ENDS
STA 89+81

GROSS LENGTH = 7,520 FT. = 1.424 MILE
NET LENGTH = 6,420 FT. = 1.216 MILE

D-91-074-11



LOCATION OF SECTION INDICATED THUS: - [black rectangle] -

STATE OF ILLINOIS
DEPARTMENT OF TRANSPORTATION
DIVISION OF HIGHWAYS

SUBMITTED OCTOBER 20, 20 11

Diana M. O'Keefe
DEPUTY DIRECTOR OF HIGHWAYS, REGION ENGINEER

December 9, 20 11
Scott E. Stitt, P.E.
acting ENGINEER OF DESIGN AND ENVIRONMENT

December 9, 20 11
William R. Frey, Jr.
Interim DIRECTOR OF HIGHWAYS, CHIEF ENGINEER

**PRINTED BY THE AUTHORITY
OF THE STATE OF ILLINOIS**