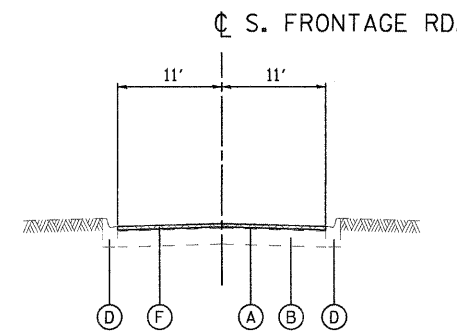


EXISTING TYPICAL SECTION

FACING NORTH
STA. 947+95 TO STA. 951+33
N.T.S.

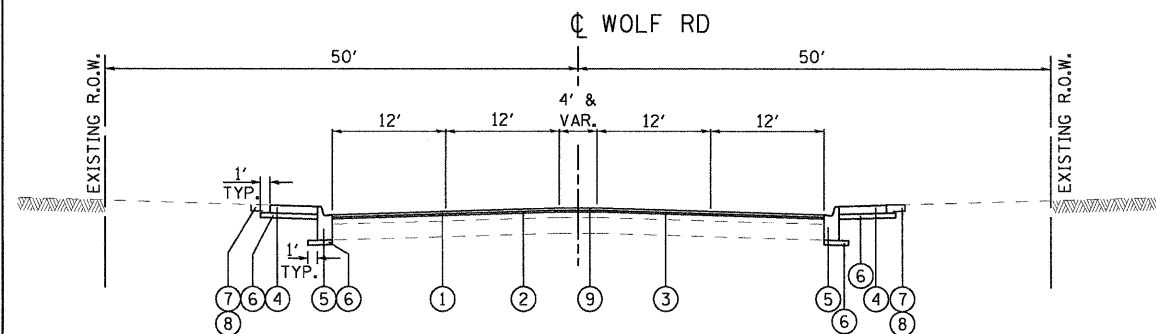


EXISTING TYPICAL SECTION

FACING EAST
STA. 101+20 TO STA. 105+00
N.T.S.

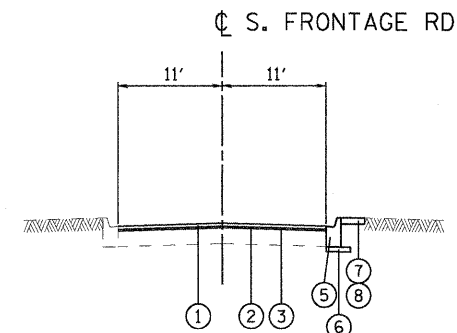
EXISTING LEGEND

- (A) EXIST. HMA SURFACE COURSE, 3"
- (B) EXIST. PCC PAVEMENT, 10"
- (C) EXIST. SUB-BASE GRANULAR MATERIAL, 4"
- (D) EXIST. COMBINATION CONCRETE CURB AND GUTTER, VARIABLE DEPTH
- (E) EXIST. STRIPED MEDIAN
- (F) PROP. HMA SURFACE REMOVAL, 2 1/4"



PROPOSED TYPICAL SECTION

FACING NORTH
STA. 947+95 TO STA. 951+33
N.T.S.



PROPOSED TYPICAL SECTION

FACING EAST
STA. 101+20 TO STA. 105+00
N.T.S.

PROPOSED LEGEND

- (1) HOT-MIX ASPHALT SURFACE COURSE, MIX "D", N70 (IL 9.5mm), 1 1/2"
- (2) LEVELING BINDER (MM), IL-4.75mm, N70, 3/4"
- (3) BITUMINOUS MATERIALS (PRIME COAT)
- (4) PORTLAND CEMENT CONCRETE SIDEWALK, 6"
- (5) COMBINATION CONCRETE CURB & GUTTER, TYPE B-6.12
- (6) SUBBASE GRANULAR MATERIAL, TYPE B, 4"
- (7) SODDING, SALT TOLERANT
- (8) TOPSOIL FURNISH AND PLACE, 4"
- (9) PROPOSED STRIPED MEDIAN

EARTH EXCAVATION FOR PROPOSED SUBGRADE MATERIAL SHALL BE INCLUDED IN THE COST OF COMBINATION CONCRETE CURB AND GUTTER, TYPE B-6.12 AND PCC SIDEWALK, 6".

BACKFILL BEHIND THE CURB AND GUTTER SHALL BE INCLUDED IN THE COST OF COMBINATION CONCRETE CURB AND GUTTER, TYPE B-6.12.

EXISTING PALATINE ROAD PAVEMENT IS 10" JOINTED PORTLAND CEMENT CONCRETE PAVEMENT.

MIX DESIGNS	AIR VOIDS @ NDES
PAVEMENT RESURFACING	
HMA SURFACE COURSE, MIX "D", N70 (IL 9.5mm); 1 1/2"	4% @ 70 GYRATIONS
LEVELING BINDER (MM), IL-9.5mm, N70; 3/4"	4% @ 70 GYRATIONS
TEMPORARY PAVEMENT	
TEMP PAVEMENT - HMA SURFACE, MIX "D", N50; 1 1/2"	4% @ 50 GYRATIONS
TEMP PAVEMENT - HMA BINDER, (IL-19mm); 8 1/2"	4% @ 50 GYRATIONS
MEDIAN SURFACE	
HMA SURFACE COURSE, MIX "D", N50 (IL 9.5mm); 4"	4% @ 50 GYRATIONS

NOTE: THE UNIT WEIGHT USED TO CALCULATE ALL HOT-MIX ASPHALT SURFACE MIXTURES IS 112 LBS/SY/IN.

THE "AC TYPE" FOR POLYMERIZED HMA MIXES SHALL BE "SBS/SBR PG 76 -22" AND FOR NON-POLYMERIZED HMA THE "AC TYPE" SHALL BE "PG 64 -22" UNLESS MODIFIED BY DISTRICT ONE SPECIAL PROVISIONS. FOR "PERCENT OF RAP" SEE DISTRICT ONE SPECIAL PROVISIONS.

TEMPORARY PAVEMENT NOTE: IF THE CONTRACTOR CHOOSES TO USE CONCRETE, THE THICKNESS SHALL BE 10". PCC TEMPORARY PAVEMENT SHALL CONSIST OF CLASS PV CONCRETE MEETING THE REQUIREMENTS OF ART. 1020 OF THE STANDARD SPECIFICATIONS.



USER NAME = zpremid	DESIGNED - DLP	REVISED -
PLOT SCALE = 50.00 ' / IN.	DRAWN - ENTRAN	REVISED -
PLOT DATE = 12/6/2011	CHECKED - TMH	REVISED -
	DATE - 10/28/11	REVISED -

**STATE OF ILLINOIS
DEPARTMENT OF TRANSPORTATION**

**WOLF ROAD OVER PALATINE ROAD
TYPICAL SECTIONS**

SCALE: 50.00 ' / IN. SHEET NO. OF SHEETS STA. TO STA.

F.A.U. RTE. 2692	SECTION 1415B-1	COUNTY COOK	TOTAL SHEETS 72	SHEET NO. 5
CONTRACT NO. 60M52				
FED. ROAD DIST. NO. 1 ILLINOIS FED. AID PROJECT				

FILE NAME = C:\projects\2102155_0095\CA00\CV\1\Shst\022\0160M52-01\shst-typical.dgn