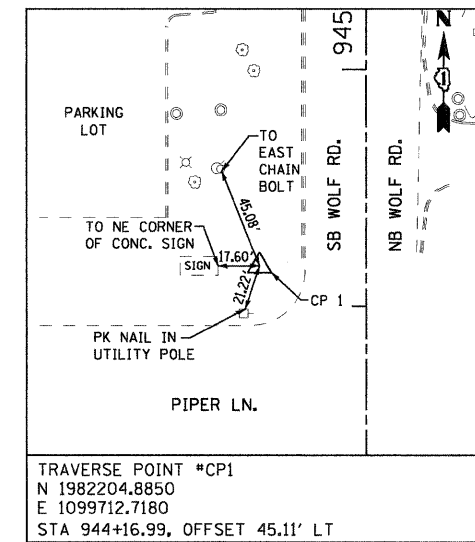
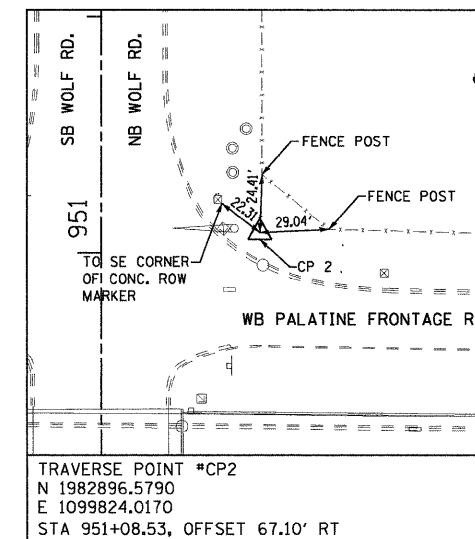


ALIGNMENT	STATION	NORTHING	EASTING
☉ PALATINE RD.	1340+00	1982789.9031	1099478.1225
	1345+00	1982786.4202	1099978.1104
☉ WOLF RD.	945+00	1982287.9612	1099757.7241
	955+00	1983287.9603	1099756.3997
☉ S. FRONTAGE RD.	100+00	1982734.1387	1099157.1326
	110+00	1982727.1729	1100157.1084



TRAVERSE POINT #CP1
 N 1982204.8850
 E 1099712.7180
 STA 944+16.99, OFFSET 45.11' LT
 TRAVERSE CONTROL POINT
 NOT TO SCALE



TRAVERSE POINT #CP2
 N 1982896.5790
 E 1099824.0170
 STA 951+08.53, OFFSET 67.10' RT
 TRAVERSE CONTROL POINT
 NOT TO SCALE

BENCHMARK

- BM-11 CHISELED "X" IN NORTHWEST BOLT OF WOLF RD. EXIT SIGN LOCATED ON THE NORTH SIDE OF PALATINE ROAD AND EAST OF WOLF ROAD. ELEV. = 648.63
 - BM-ENT-2 CUT "D" AT SOUTHEAST CORNER OF SOUTH ABUTMENT WALL OF THE NORTH-SOUTH RAILROAD BRIDGE FOR SOO LINE R.R. OVER PALATINE ROAD ±200 FT. WEST OF CENTERLINE FOR WOLF ROAD. ELEV. = 654.66
- NOTE: VERTICAL AND HORIZONTAL CONTROL NAVD 1988 DATUM PER GPS TOPCON PSC NET.

FILE NAME = G:\p\proj\ent\2102155\009\CA00\CADD\Civil\Sheet\022\016B062-06ent-ATB.dgn