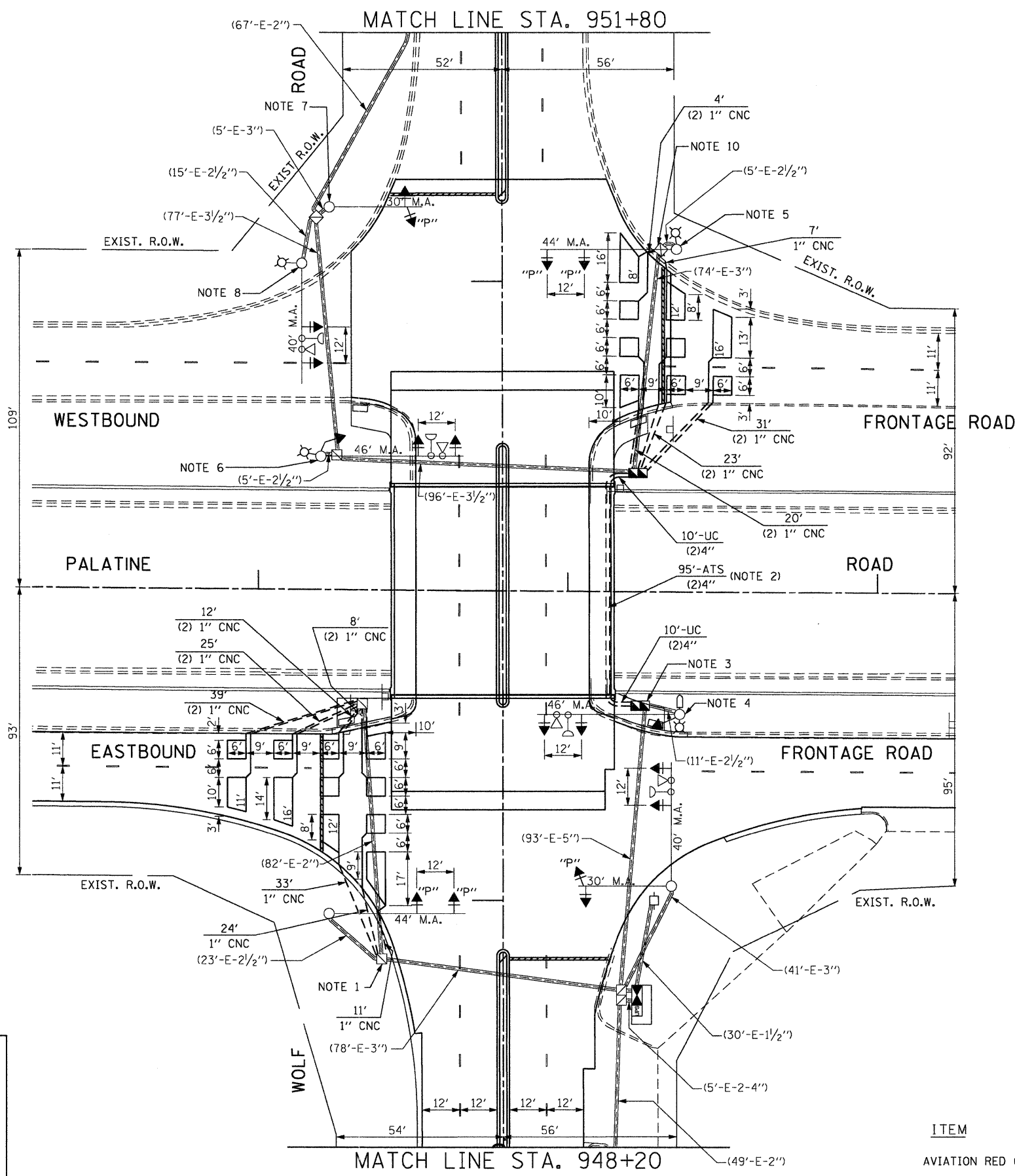




- NOTE 1: THE FRAME AND COVER OF THE EXISTING CONCRETE HANDHOLE SHALL BE REMOVED AND THE WALLS SHALL BE PARTIALLY REMOVED AND COVERED WITH A METAL PLATE TO PROVIDE A SAFE AND SMOOTH RIDING SURFACE DURING CONSTRUCTION STAGING. UPON COMPLETION OF THE WORK, THE CONCRETE HANDHOLE SHALL BE REBUILT TO THE LEVEL OF THE FINISHED GRADE OF THE ADJACENT AREA AS SHOWN IN THE PLAN AND AS DIRECTED BY THE ENGINEER. THIS WORK WILL BE PAID FOR AS "REBUILD EXISTING HANDHOLE".
- NOTE 2: THE CONTRACTOR SHALL REMOVE THE EXISTING 4" CONDUIT EMBEDDED IN EXISTING PARAPET WALL AS PART OF STRUCTURAL REMOVAL WORK. NEW 4" CONDUITS (TWO) SHALL BE ATTACHED TO THE STRUCTURE BETWEEN TWO BEAMS. FOR DETAILS SEE STRUCTURE PLANS. THE EXISTING CABLES AFFECTED BY THE REMOVAL OF EXISTING CONDUIT SHALL BE REMOVED AND NEW CABLES SHALL BE INSTALLED IN THEIR PLACE AS SHOWN IN THE PLANS, CABLE DIAGRAM, AND AS DIRECTED BY THE ENGINEER.
- NOTE 3: REMOVE 232' OF 3/C CABLE (2 CABLES), 232' OF 3/C NO. 20 CABLE (2 CABLES), 580' OF 5/C CABLE (5 CABLES), 464' OF 7/C CABLE (4 CABLES), AND 580' OF 1 PAIR LEAD-IN CABLE (5 CABLES) BETWEEN CONTROLLER CABINET AND THIS DOUBLE HANDHOLE (EXISTING REGULAR HANDHOLE) IN THE NORTHEAST CORNER OF THE EASTBOUND FRONTAGE ROAD AND WOLF ROAD (TOTAL 2088').
- NOTE 4: REMOVE 200' OF 3/C CABLE (1 CABLE), 200' OF 3/C NO. 20 CABLE (1 CABLE), 158' OF 3/C AVIATION OBSTRUCTION RED LIGHT CABLE (1 CABLE), 353' 5/C CABLE (2 CABLES), AND 190' OF 7/C CABLE (1 CABLE) BETWEEN CONTROLLER CABINET AND THIS MAST ARM POLE IN THE NORTHEAST CORNER OF THE EASTBOUND FRONTAGE ROAD AND WOLF ROAD (TOTAL 1101').
- NOTE 5: REMOVE 111' OF 3/C CABLE (1 CABLE) FOR AVIATION OBSTRUCTION RED LIGHT, 141' OF 5/C CABLE (1 CABLE), AND 153' OF 7/C CABLE (1 CABLE) BETWEEN HANDHOLE IN SOUTHEAST CORNER OF WB FRONTAGE ROAD AND THE MAST ARM POLE MOUNTED SIGNALS IN THE NORTHEAST CORNER OF WESTBOUND FRONTAGE ROAD. ALSO REMOVE 87' OF 1 PAIR LEAD-IN CABLE (1 CABLE) BETWEEN THE HANDHOLES (TOTAL 405').
- NOTE 6: REMOVE 175' OF 3/C CABLE (1 CABLE), 175' OF 3/C NO. 20 CABLE (1 CABLE), 133' OF 3/C CABLE (1 CABLE) FOR AVIATION OBSTRUCTION RED LIGHT, 303' OF 5/C CABLE (2 CABLES), AND 177' OF 7/C CABLE (1 CABLE) BETWEEN HANDHOLE IN SOUTHEAST CORNER OF WB FRONTAGE ROAD AND THIS MAST ARM POLE IN THE SOUTHWEST CORNER OF WESTBOUND FRONTAGE ROAD (TOTAL 963').
- NOTE 7: REMOVE 488' OF 7/C CABLE (2 CABLES) BETWEEN HANDHOLE IN SOUTHEAST CORNER OF WB FRONTAGE ROAD AND THE MAST ARM POLE IN NORTHWEST CORNER OF WESTBOUND FRONTAGE ROAD WITH SIGNALS FOR NORTHBOUND AND SOUTHBOUND DIRECTIONS (TOTAL 488').
- NOTE 8: REMOVE 262' OF 3/C CABLE (1 CABLE), 262' OF 3/C NO. 20 CABLE (1 CABLE), 226' OF 3/C CABLE (1 CABLE) FOR AVIATION OBSTRUCTION RED LIGHT, AND 516' OF 5/C CABLE (2 CABLES), BETWEEN HANDHOLE IN SOUTHEAST CORNER OF WB FRONTAGE ROAD AND THE MAST ARM POLE IN NORTHWEST CORNER OF WESTBOUND FRONTAGE ROAD WITH SIGNALS FOR WESTBOUND DIRECTION (TOTAL 1040').
- NOTE 9: REMOVE 461' OF 1 PAIR LEAD-IN CABLE (1 CABLE) BETWEEN THE HANDHOLE IN THE SOUTHEAST CORNER OF WB FRONTAGE ROAD AND THIS HANDHOLE FOR FAR OUT LOOPS FOR SOUTHBOUND DIRECTION OF TRAFFIC (TOTAL 461').
- NOTE 10: REMOVE 74' OF 1 PAIR LEAD-IN CABLE (1 CABLE) BETWEEN THE HANDHOLE IN THE SOUTHEAST AND NORTHEAST CORNERS OF WESTBOUND FRONTAGE ROAD (TOTAL 74').
- NOTE 11: A TOTAL OF 456' OF 1/C NO. 6 GROUNDING CABLE IS ESTIMATED FOR REMOVAL AND IS INCLUDED IN THE CABLE REMOVAL QUANTITY.



THE NEW CONTROLLER CABINET SHALL BE INSTALLED ON THE EXISTING FOUNDATION.

Restoration of Work Area. Restoration of the traffic signal work area shall be included in the related pay item such as foundation, conduit, handhole, etc., and no extra compensation shall be allowed. All roadway surfaces such as shoulders, medians, sidewalks, pavement, etc. shall be replaced in kind. All damage to mowed lawns shall be replaced with an approved sod, and all damage to unmowed fields shall be seeded in accordance with Standard Specifications 252 and 250 respectively.

LEGEND

ITEM	EXISTING	PROPOSED
AVIATION RED OBSTRUCTION LIGHT	⊗	⊗
AVIATION PHOTOELECTRIC CONTROL	□	■