

INDEX OF SHEETS

- S1. General Plan and Elevation
- S2. General Notes, Index of Sheets & Total Bill of Material
- S3. Stage Construction Details
- S4. Temporary Concrete Barrier for Stage Construction
- S5. Top of Deck Elevations (1 of 2)
- S6. Top of Deck Elevations (2 of 2)
- S7. Top of South Approach Slab Elevations
- S8. Top of North Approach Slab Elevations
- S9. Deck Plan and Section
- S10. Parapet and Sidewalk Elevation and Details
- S11. Preformed Joint Strip Seal
- S12. Drainage Scupper DS-12
- S13. Bridge Drainage System
- S14. South Approach Slab
- S15. North Approach Slab
- S16. Approach Slab Sections and Details
- S17. Framing Plan
- S18. Structural Steel Details
- S19. Bearing Details
- S20. Cantilever Forming Brackets
- S21. South Abutment Plan and Elevation
- S22. South Abutment Details
- S23. North Abutment Plan and Elevation
- S24. North Abutment Details
- S25. Bar Splicer Assembly
- S26. Existing Bridge Plans (1 of 4)
- S27. Existing Bridge Plans (2 of 4)
- S28. Existing Bridge Plans (3 of 4)
- S29. Existing Bridge Plans (4 of 4)

STATION 950+00.00
REBUILT 20 BY
STATE OF ILLINOIS
F.A.U. RTE. 2692 SEC. 1415B-1
LOADING HL-93
STRUCTURE NO. 016-0680

NAME PLATE

See Std. 515001

Existing Name Plate shall be cleaned and relocated next to new Name Plate. Cost included with Name Plates.
See Sheet S1 for Name Plate location.

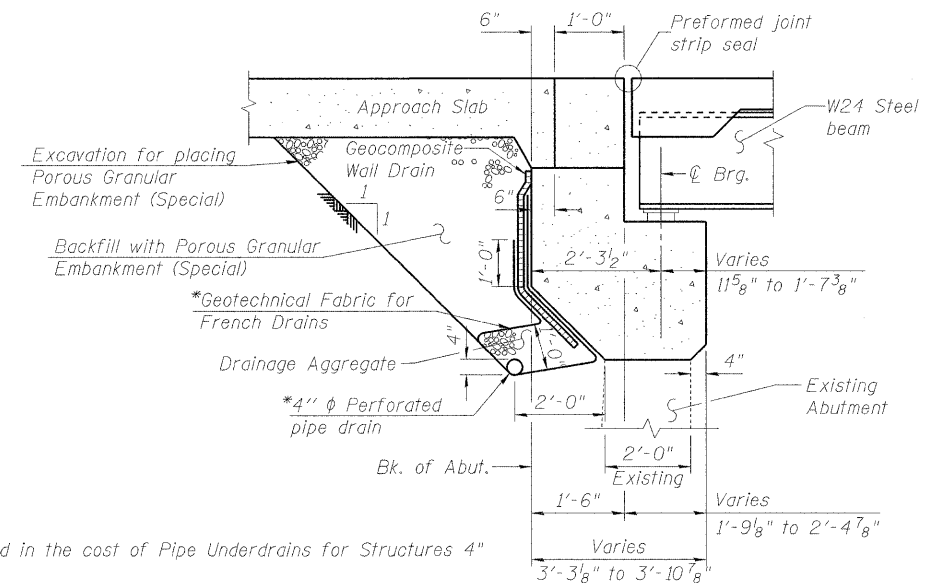
These plans are for the erection of the bridge. All work shown related to the Beam and Bearing Fabrication Contract (60R35) is for information only. It is not included in this contract, and is identified as "Not Included in this Contract" or "For Information only"

GENERAL NOTES

1. Fasteners shall be AASHTO M164 Type 1, mechanically galvanized bolts. Bolts $\frac{3}{4}$ in. ϕ , holes $\frac{15}{16}$ in. ϕ , unless otherwise noted.
2. Calculated weight of Structural Steel (M270, Grade 50) = 117,240 lbs.
Calculated weight of Structural Steel (M270, Grade 36) = 11,770 lbs.
3. No field welding is permitted except as specified in the contract documents.
4. Reinforcement bars shall conform to the requirements of ASTM A 706 Gr 60.
5. Reinforcement bars designated (E) shall be epoxy coated.
6. Plan dimensions and details relative to existing plans are subject to nominal construction variations. The Contractor shall field verify existing dimensions and details affecting new construction and make necessary approved adjustments prior to construction or ordering of materials. Such variations shall not be cause for additional compensation for a change in scope of the work, however, the Contractor will be paid for the quantity actually furnished at the unit price bid for the work.
7. Concrete Sealer shall be applied to the designated areas of the exposed surface of the new abutment caps and backwalls.
8. The Organic Zinc Rich Primer / Epoxy / Urethane Paint System shall be used for painting of new structural steel except where otherwise noted. The entire system shall be shop applied, with the exception that masked off connection surfaces, field installed fasteners and damaged areas shall be touched up in the field. The color of the final finish coat for all interior steel surfaces shall be Gray, Munsell No. 5B 7/1. The color of the final finish coat for the exterior and bottom flange of the fascia beams shall be Reddish Brown (Munsell No. 2.5YR 3/4). See Section 506 of the Standard Specifications.
9. Slipforming of parapets is not allowed.

TOTAL BILL OF MATERIAL

ITEM	UNIT	SUPER	SUB	TOTAL
Concrete Removal	Cu. Yd.		66.4	66.4
Removal of Existing Superstructures	Each	1		1
Structure Excavation	Cu. Yd.		82	82
Concrete Structures	Cu. Yd.		102.8	102.8
Concrete Superstructure	Cu. Yd.	404.0		404.0
Bridge Deck Grooving	Sq. Yd.	826		826
Protective Coat	Sq. Yd.	1082		1082
Erecting Structural Steel	L. Sum	1		1
Stud Shear Connectors	Each	3636		3636
Reinforcement Bars, Epoxy Coated	Pound	79,320	15,300	94,620
Bar Splicers	Each	509	114	623
Name Plates	Each	1		1
Preformed Joint Strip Seal	Foot	145.0		145.0
Erecting Elastomeric Bearing Assembly, Type I	Each	12		12
Anchor Bolts, 5/8"	Each	24		24
Anchor Bolts, 1"	Each	24		24
Concrete Sealer	Sq. Ft.		1159	1159
Geocomposite Wall Drain	Sq. Yd.		75	75
Removing and Re-Erecting Existing Railing	Foot	135		135
Asbestos Bearing Pad Removal	Each	28		28
Drainage Scuppers, DS-12	Each	2		2
Drainage System	L. Sum		1	1
Temporary Sheet Piling	Sq. Ft.		212	212
Pipe Underdrains for Structures 4"	Foot		146	146
Porous Granular Embankment, Special	Cu. Yd.		72	72



SECTION THRU ABUTMENT

(Horiz. dim. @ Rt. L's)

Note:
All drainage system components shall extend parallel 2'-0" beyond the ends of the abutment. At 2'-0" beyond the abutment ends, an outlet pipe shall extend into the retaining walls. The retaining walls shall be cored to accept the outlet pipe. This work shall be included in the pay item for Pipe Underdrains for Structures 4".

*Included in the cost of Pipe Underdrains for Structures 4"

FILE NAME = g:\p\proj\2102155-007\road\structure\1415B-016-0680-002-General Notes.dgn

	USER NAME = 2sayerb	DESIGNED - BPS	REVISED -	STATE OF ILLINOIS DEPARTMENT OF TRANSPORTATION	GENERAL NOTES, INDEX OF SHEETS & TOTAL BILL OF MATERIAL S.N. 016-0680	F.A.U. RTE. 2692	SECTION 1415B-1	COUNTY COOK	TOTAL SHEETS 72	SHEET NO. 37
	PLOT SCALE = N/A	DRAWN - BPS	REVISED -			SHEET NO. S2 OF 29 SHEETS		CONTRACT NO. 60M52		ILLINOIS FED. AID PROJECT
	PLOT DATE = 12/5/2011	CHECKED - BHS	REVISED -							