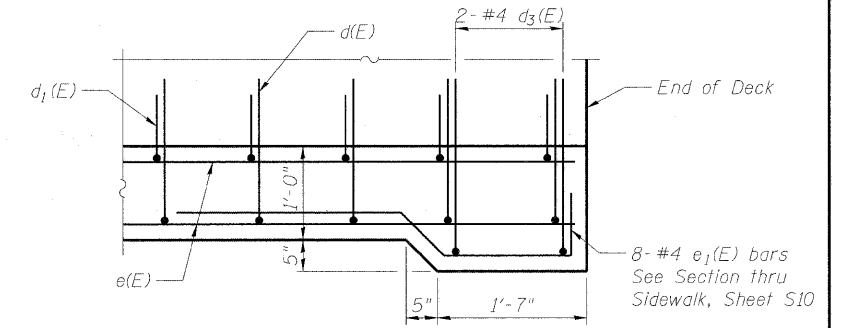
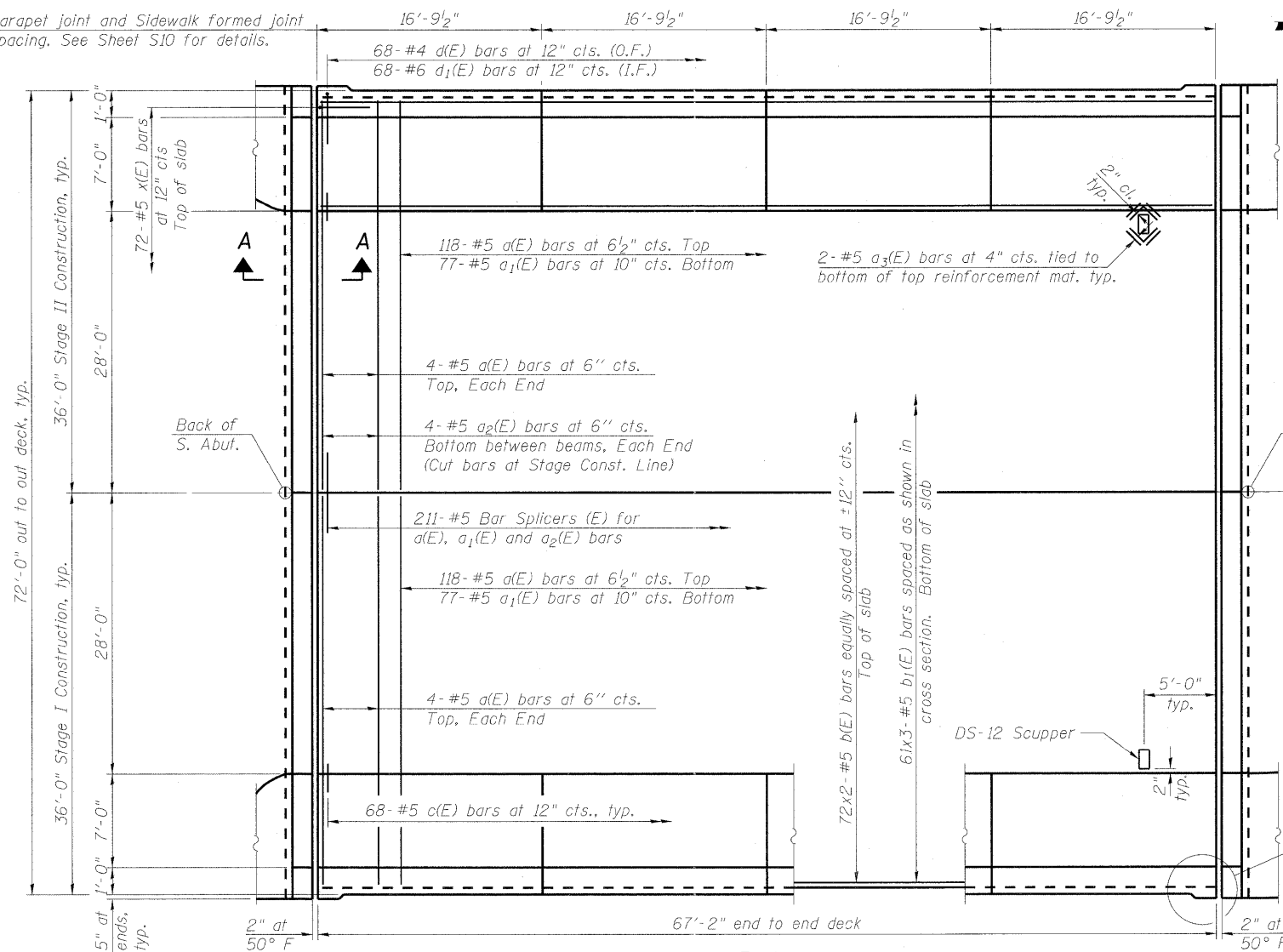


Parapet joint and Sidewalk formed joint spacing. See Sheet S10 for details.

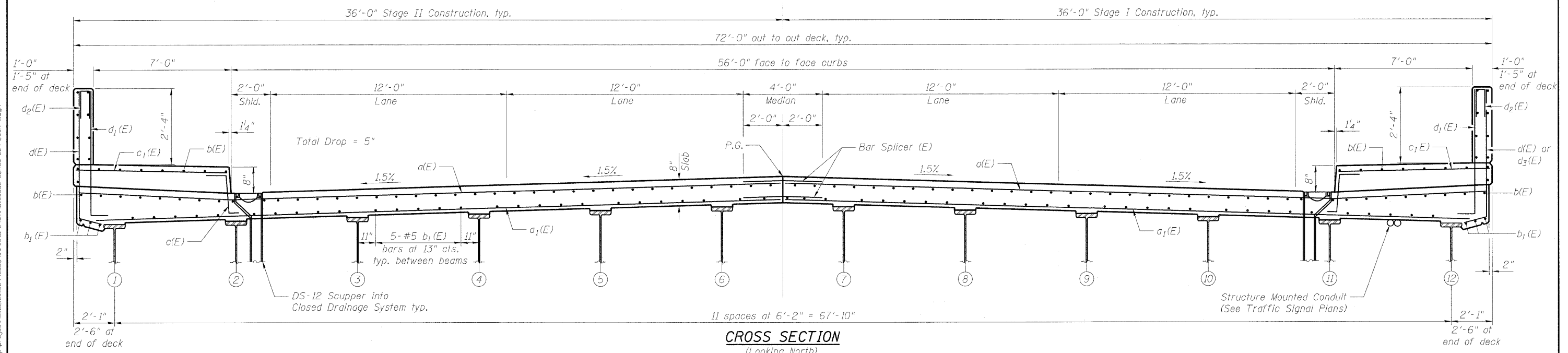


DETAIL A

Notes:
See Sheet S10 for superstructure details and Bill of Material.
Bars indicated thus 20 x 3-#5 etc. indicates 20 lines of bars with 3 lengths per line.
See Sheet S10 for parapet reinforcement.

MINIMUM BAR LAP
#5 bar = 2'-7"

PLAN



CROSS SECTION
(Looking North)

FILE NAME = g:\projects\12102155_0079\road\structure\sh1\166660-60\62-009-Deck_1.dgn



USER NAME = zpiend
PLOT SCALE = N/A
PLOT DATE = 10/27/2011

DESIGNED - BPS
CHECKED - BHS
DRAWN - BPS
CHECKED - BHS

REVISED -
REVISED -
REVISED -
REVISED -

STATE OF ILLINOIS
DEPARTMENT OF TRANSPORTATION

DECK PLAN AND SECTION
S.N. 016-0680

SHEET NO. 59 OF 29 SHEETS

F.A.U. RTE.	SECTION	COUNTY	TOTAL SHEETS	SHEET NO.
2692	1415B-1	COOK	72	44
CONTRACT NO. 60M52				

ILLINOIS FED. AID PROJECT