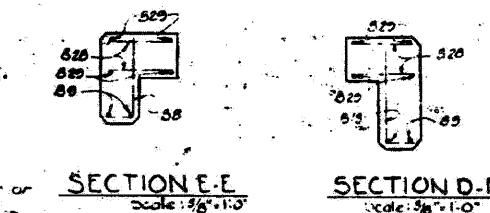


ABUTMENT	ELEVATION				
	A	B	C	D	E
1	648.70	646.39	644.07	641.67	645.22
2	644.00	646.89	644.37	647.9	645.52



- NOTES**
- Designations used:  
 N.F. = Near Face  
 F.F. = Far Face  
 E.F. = Each Face
  - Porous Granular Embankment shall extend the full length of the abutment, from top of footing to the underside of the approach slab.
  - Chamfer all exposed edges of concrete 1/4" unless otherwise noted.
  - The exposed portion of construction joint "A" shall be chamfered 1/4".
  - The backfill behind the abutments shall be completed to the elevation of construction joint "A" prior to placing the superstructure.
  - The portion of the abutment concrete above construction joint "A" shall not be placed until after the setting of the precast beams has been completed.
  - For Reinforcement see List see Sh. 112.
  - For Handrail & Bridge Rail Detail see Sh. 98.
  - For Subsoil Details see Sh. 99.
  - The back of abutment shall be waterproofed in accordance with Art. 51.21, State of Illinois, Standard Specifications.
  - Joint Sealer, Exp. Joint Filler, Waterproofing and Split Rubber Waterseal shall be included in the unit price bid per cubic yard for the concrete.

Class A Excavation For Structures	281 Cu
Class A Excavation For Structures Modified	1046 Cu
Class X Concrete - Footings	194 Cu
Class X Concrete - Above Footings	256 Cu
Reinforcement Bars	20,766 Lb
Perforated Corrugated Metal Pipe	146 Lb
Porous Granular Embankment	190 Cu
Sand of Gravel Embankment	970 Cu
Furnishing and Erecting Metal Handrail	19 Lb

DEPARTMENT OF HIGHWAYS  
 COOK COUNTY, ILLINOIS

SEYMOUR SIMON  
 PRESIDENT, BOARD OF ENGINEERS

WILLIAM J. HORTINE  
 SUPERVISOR OF HIGHWAYS

PROP PALATINE ROAD UNDER WOLF RY.  
 ABUTMENTS 1&2

DATE	BY	DESCRIPTION

VOGT, IVERS, & ASSOCIATES  
 ENGINEERS - ARCHITECTS  
 CHICAGO

COMPUTED: C.F.L.  
 DRAWN: C.F.L.  
 PROJECT APPROVED: [Signature]

APPROVED Oct 4 1962  
 [Signature]

DATE	BY	DESCRIPTION

FILE NAME = g:\p\p\j\2102155.dwg