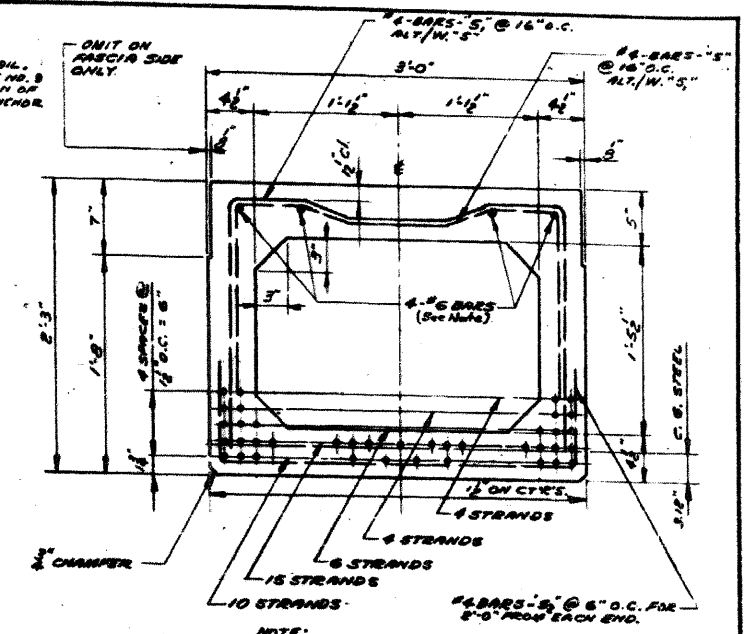
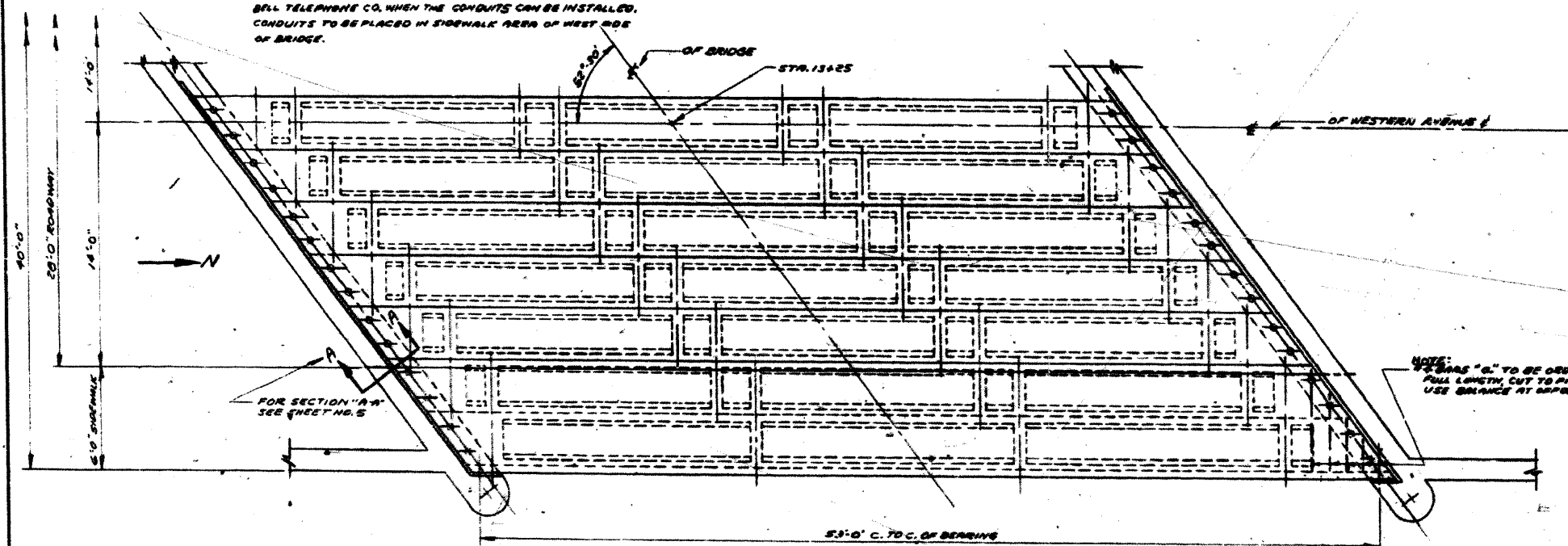


NOTE: ILLINOIS BELL TELEPHONE CO. TO FURNISH AND INSTALL "B" CEMENT CONDUITS WITH THEIR OWN PIPES. THIS WORK IS TO BE COORDINATED BY THE CONTRACTOR CONTACTING THE ILLINOIS BELL TELEPHONE CO. WHEN THE CONDUITS CAN BE INSTALLED. CONDUITS TO BE PLACED IN SIDEWALK AREA OF WEST SIDE OF BRIDGE.

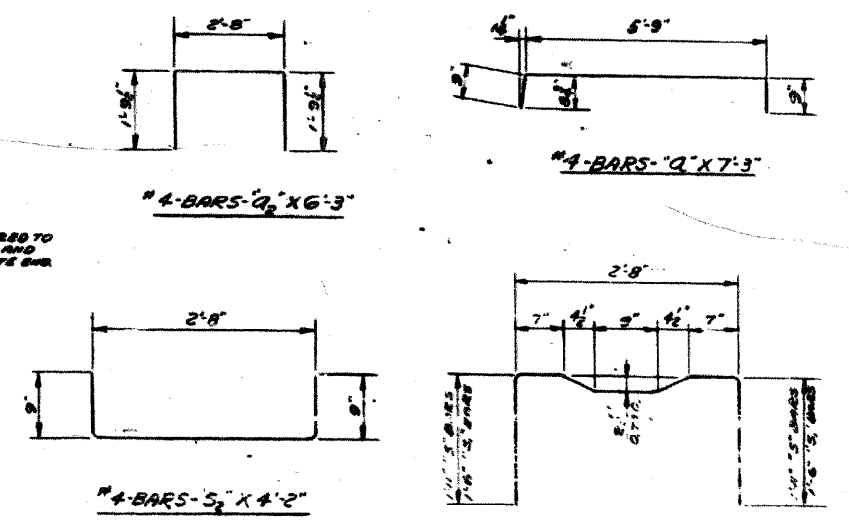
TYPICAL SECTION
SCALE: 1/4" = 1'-0"



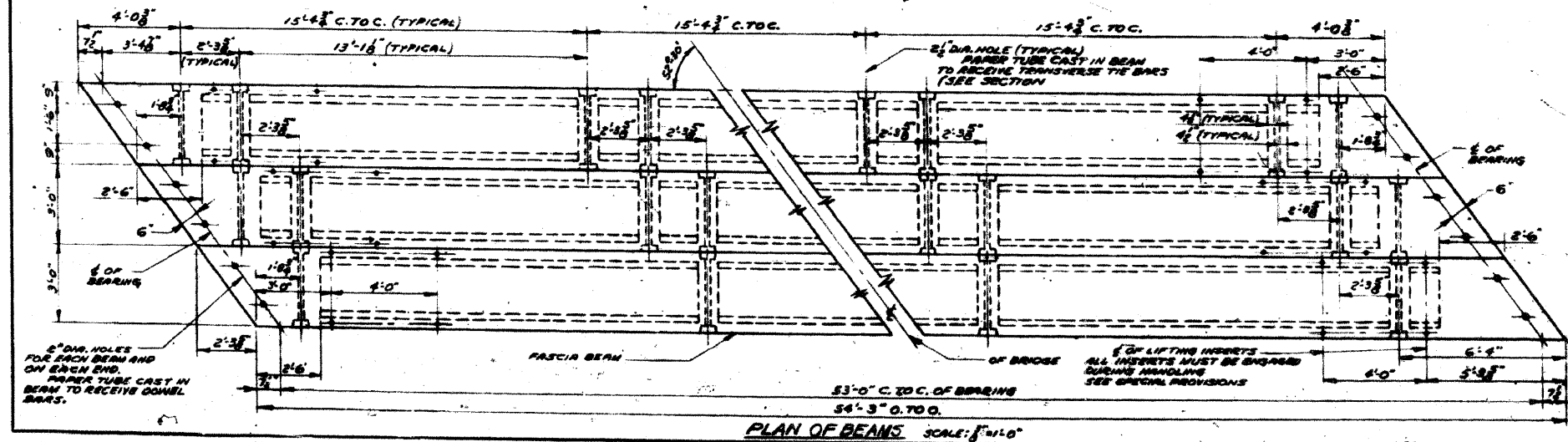
SECTION A-A
SCALE: 1/4" = 1'-0"



HALF PLAN
SCALE: 1/4" = 1'-0"



NOTE: THE SPICES OF #6 TOP BARS SHALL BE STAGGERED SO THAT NO MORE THAN TWO (2) OCCUR AT ANY POSITION WITH A MINIMUM OF 2'-0\"/>



PLAN OF BEAMS SCALE: 1/4" = 1'-0"

REVISIONS		
DATE	BY	DESCRIPTION

DEPARTMENT OF HIGHWAYS COOK COUNTY, ILLINOIS			
DANIEL RYAN PRESIDENT BOARD OF COMMISSIONERS	WILLIAM J. MORTIMER SUPERINTENDENT OF HIGHWAYS		
DETAILS OF SUPERSTRUCTURE WESTERN AVENUE BRIDGE OVER BUTTERFIELD CREEK			
COMPUTED B.B. RIMAN	PROJECT 064-0605 M.F.T.	SCALE AS SHOWN	
DRAWN F. TAMMERSBAH	CHECKED R.N. LAUSE	APPROVED M.P. [Signature]	DATE 1960 054 4 17

APEX
CONSULTING ENGINEERS, LLC
111 E. Wacker Drive, Suite 520
Chicago, IL 60601
Phone (312) 977-0660 Fax (312) 977-0661

USER NAME =	DESIGNED -	REVISED
PLOT SCALE =	CHECKED -	REVISED
PLOT DATE = 10/27/2011	DRAWN -	REVISED
	CHECKED -	REVISED

STATE OF ILLINOIS
DEPARTMENT OF TRANSPORTATION

EXISTING BRIDGE PLANS (4 OF 6)
S.N. 016-0772
SHEET NO. 532 OF 534 SHEETS

F.A.U. RTE. 2845	SECTION 0505-B	COUNTY COOK	TOTAL SHEETS 52	SHEET NO. 42
CONTRACT NO. 60M78 ILLINOIS FED. AID PROJECT				