

F.A.P. RTE.	SECTION	COUNTY	TOTAL SHEETS	SHEET NO.
326	105X-RS-3	McHENRY	25	1
		ILLINOIS	CONTRACT NO. 60N40	

STATE OF ILLINOIS
DEPARTMENT OF TRANSPORTATION
DIVISION OF HIGHWAYS

PROPOSED HIGHWAY PLANS

F.A.P. ROUTE 326: ILL 47
SOUTH OF ILL 176 TO UNION
SECTION: 105X-RS-3
RESURFACING

FOR INDEX OF SHEETS, SEE SHEET NO. 2

THE PROJECT IS LOCATED IN THE VILLAGES OF LAKE IN THE HILLS AND HUNTLEY

TRAFFIC DATA

ADT (2009) = 15,200

POSTED SPEED LIMIT = 45 MPH - 55 MPH

McHENRY COUNTY
C-91-310-11

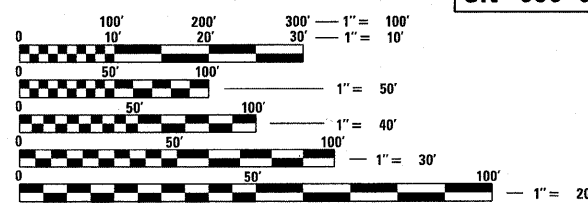


PROJECT ENDS: STA. 332 + 02

STA. 233 + 32 TO STA. 234 + 12
SN 056-0025

OMISSION ENDS: STA. 293 + 75

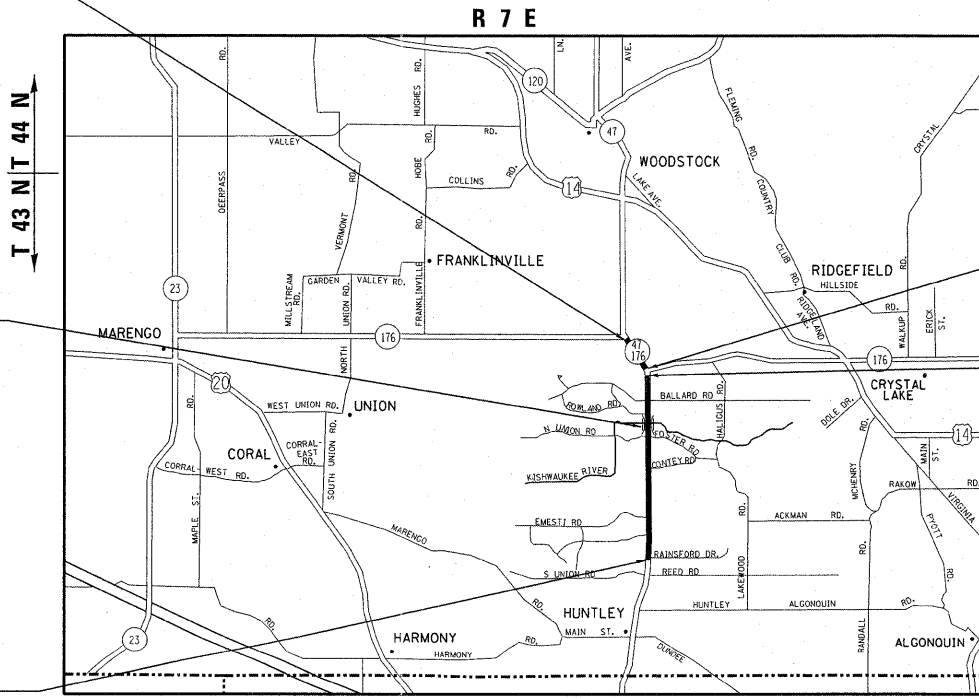
OMISSION BEGINS: STA. 287 + 67.90



FULL SIZE PLANS HAVE BEEN PREPARED USING STANDARD ENGINEERING SCALES. REDUCED SIZED PLANS WILL NOT CONFORM TO STANDARD SCALES. IN MAKING MEASUREMENTS ON REDUCED PLANS, THE ABOVE SCALES MAY BE USED.

J.U.L.I.E.
 JOINT UTILITY LOCATION INFORMATION FOR EXCAVATION
 1-800-892-0123
 OR 811

PROJECT BEGINS: STA. 74 + 85



GROSS LENGTH = 25,717 FT. = 4.871 MILE
 NET LENGTH = 25,110 FT. = 4.756 MILE

PROJECT ENGINEER ROBERT BORO (847)705-4178
 PROJECT MANAGER ISSAM RAYYAN

CONTRACT NO. 60N40

STATE OF ILLINOIS
 DEPARTMENT OF TRANSPORTATION
 DIVISION OF HIGHWAYS

SUBMITTED OCTOBER 13, 20 11

Diane M. O'Keefe
 DEPUTY DIRECTOR OF HIGHWAYS, REGION ENGINEER

December 9 20 11
Scott E. Stitt, P.E.
 acting ENGINEER OF DESIGN AND ENVIRONMENT

December 9 20 11
William R. Flynn
 DIRECTOR OF HIGHWAYS, CHIEF ENGINEER

PRINTED BY THE AUTHORITY OF THE STATE OF ILLINOIS