

STATE OF ILLINOIS
 DEPARTMENT OF TRANSPORTATION
 DIVISION OF HIGHWAYS

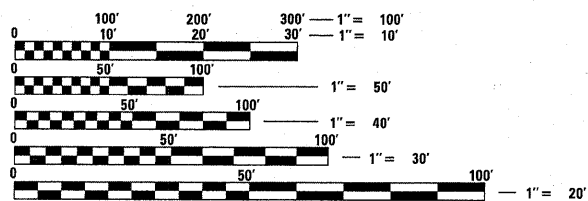
**PROPOSED
 HIGHWAY PLANS**

F.A.P. 846 (ILL 53)
 SECTION 4R-RS-9
 MANHATTAN RD. TO HOFF RD.
 RESURFACING (3P)
 WILL COUNTY
 C-91-484-11

F.A.P. RTE.	SECTION	COUNTY	TOTAL SHEETS	SHEET NO.
846	4R-RS-9	WILL	25	1
FED. ROAD DIST. NO.	ILLINOIS	CONTRACT NO. 60P19		

FOR INDEX OF SHEETS, SEE SHEET NO. 2

THE IMPROVEMENT IS LOCATED
 WITHIN THE VILLAGE OF ELWOOD
 AND UNINCORPORATED WILL COUNTY

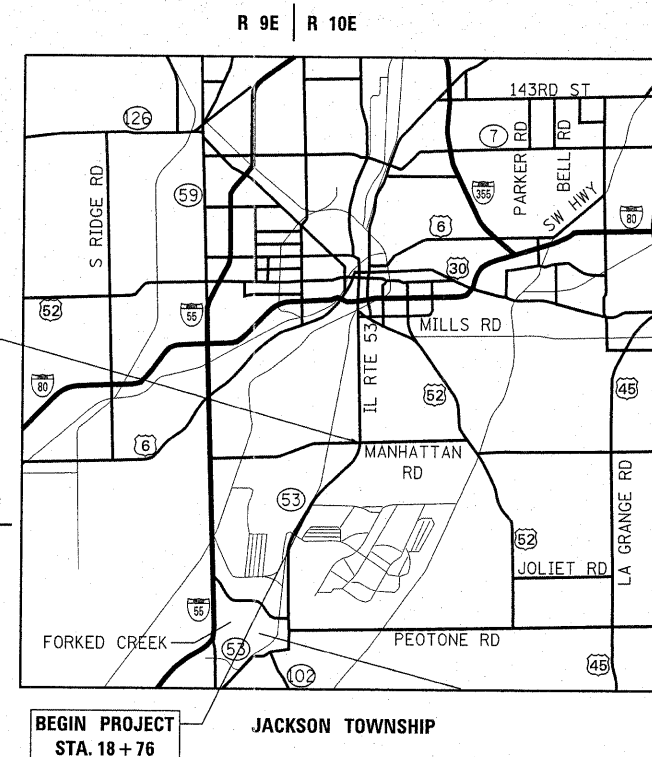


FULL SIZE PLANS HAVE BEEN PREPARED USING STANDARD ENGINEERING SCALES. REDUCED SIZED PLANS WILL NOT CONFORM TO STANDARD SCALES. IN MAKING MEASUREMENTS ON REDUCED PLANS, THE ABOVE SCALES MAY BE USED.

J.U.L.I.E.
 JOINT UTILITY LOCATION INFORMATION FOR EXCAVATION
 1-800-892-0123
 OR 811

PROJECT ENGINEER: JENPAI CHANG (847) 705-4432
 PROJECT MANAGER: KEN ENG (847) 702-4247

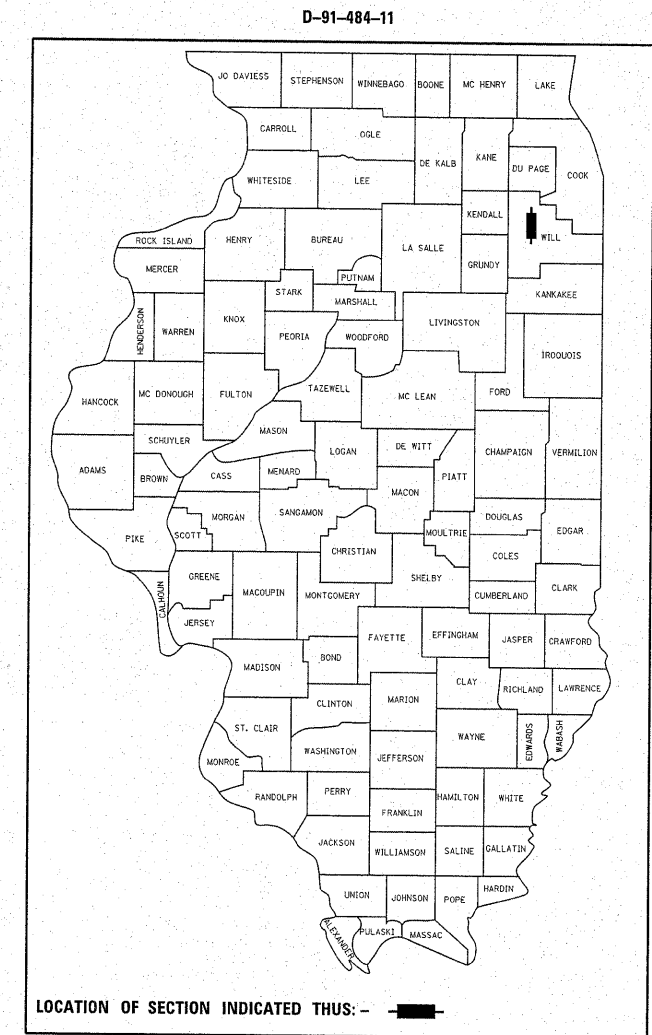
CONTRACT NO. 60P19



GROSS AND NET LENGTH OF PROJECT = 17,924 FT = 3.39 MI.

TRAFFIC DATA

2009 ADT - 9,100
 POSTED SPEED LIMIT - 55 MPH



LOCATION OF SECTION INDICATED THIS: - [black rectangle symbol]

STATE OF ILLINOIS
 DEPARTMENT OF TRANSPORTATION
 DIVISION OF HIGHWAYS

SUBMITTED October 20, 2011

Diane M. O'Keefe
 DEPUTY DIRECTOR OF HIGHWAYS, REGION ENGINEER

December 9, 2011

Scott E. Stitt, P.E.
 acting ENGINEER OF DESIGN AND ENVIRONMENT

December 9, 2011

William R. Prewer
 Interim DIRECTOR OF HIGHWAYS, CHIEF ENGINEER

**PRINTED BY THE AUTHORITY
 OF THE STATE OF ILLINOIS**