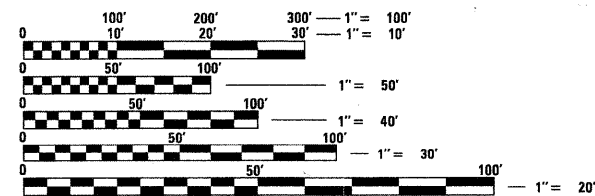


INDEX OF SHEETS

- 1. TITLE SHEET
- 2. GENERAL NOTES
- 3. SUMMARY OF QUANTITIES
- 4.-9. DISTRICT ONE STANDARD TRAFFIC SIGNAL DESIGN DETAILS
- 10. TRAFFIC SIGNAL MODIFICATION PLAN
U.S. ROUTE 12 /20 (95TH STREET) AT IL ROUTE 50 (CICERO AVENUE)
- 11. SCHEDULE OF QUANTITIES, CABLE PLAN AND PHASE DESIGNATION DIAGRAM
U.S. ROUTE 12 /20 (95TH STREET) AT IL ROUTE 50 (CICERO AVENUE)
- 12. TEMPORARY TRAFFIC SIGNAL INSTALLATION AND REMOVAL PLAN
U.S. ROUTE 12 /20 (95TH STREET) AT KOSTNER AVENUE
- 13. TEMPORARY CABLE PLAN AND PHASE DESIGNATION DIAGRAM
U.S. ROUTE 12 /20 (95TH STREET) AT KOSTNER AVENUE
- 14. TRAFFIC SIGNAL INSTALLATION PLAN
U.S. ROUTE 12 /20 (95TH STREET) AT KOSTNER AVENUE
- 15. SCHEDULE OF QUANTITIES, CABLE PLAN AND PHASE DESIGNATION DIAGRAM
U.S. ROUTE 12 /20 (95TH STREET) AT KOSTNER AVENUE
- 16. TEMPORARY INTERCONNECT SCHEMATIC
U.S. ROUTE 12 /20 (95TH STREET)
- 17.-18. INTERCONNECT PLAN
U.S. ROUTE 12 /20 (95TH STREET)
- 19. INTERCONNECT SCHEMATIC
U.S. ROUTE 12 /20 (95TH STREET)
- 20. MAST ARM MOUNTED STREET NAME SIGNS
U.S. ROUTE 12 /20 (95TH STREET) AT KOSTNER AVENUE
- 21. ARTERIAL ROAD INFORMATION SIGN (TC-22)

IDOT STANDARDS:

- 701101-02 OFF-ROAD OPERATIONS, MULTILANE, 4.5 m (15') TO 600 mm (24") FROM PAVEMENT EDGE
- 701106-02 OFF-ROAD OPERATIONS, 2L, 2W, 4.5 m (15') TO 600 mm (24") FROM PAVEMENT EDGE
- 701606-08 URBAN LANE CLOSURE, MULTILANE, 2W WITH MOUNTABLE MEDIAN
- 701701-08 URBAN LANE CLOSURE, MULTILANE INTERSECTION
- 701901-02 TRAFFIC CONTROL DEVICES
- 720001-01 SIGN PANEL MOUNTING DETAILS
- 814001-02 HANDHOLES
- 814008-02 DOUBLE HANDHOLES
- 857001-01 STANDARD PHASE DESIGNATION DIAGRAMS AND PHASE SEQUENCES
- 886001-01 DETECTOR LOOP INSTALLATION
- 862001-01 UNINTERRUPTIBLE POWER SUPPLY (UPS)
- 877001-05 STEEL MAST ARM ASSEMBLY AND POLE 16' THROUGH 55'
- 877011-05 STEEL COMB. MAST ARM ASSEMBLY AND POLE 16' THROUGH 55'
- 878001-09 CONCRETE FOUNDATION DETAILS
- 880001-01 SPAN WIRE MOUNTED SIGNALS AND FLASHING BEACON INSTALLATION
- 880006-04 TRAFFIC SIGNAL MOUNTING DETAILS



FULL SIZE PLANS HAVE BEEN PREPARED USING STANDARD ENGINEERING SCALES. REDUCED SIZED PLANS WILL NOT CONFORM TO STANDARD SCALES. IN MAKING MEASUREMENTS ON REDUCED PLANS, THE ABOVE SCALES MAY BE USED.

J.U.L.I.E.
JOINT UTILITY LOCATING INFORMATION FOR EXCAVATORS
1-800-892-0123
OR 811

CONTRACT NO. 60P44

STATE OF ILLINOIS

DEPARTMENT OF TRANSPORTATION

DIVISION OF HIGHWAYS

**PLANS FOR PROPOSED
FEDERAL AID HIGHWAY**

DISTRICT 1

HIGHWAY SAFETY IMPROVEMENT PROJECT

U.S. ROUTE 12 /20 (95TH STREET) AT

IL ROUTE 50 (CICERO AVENUE) AND KOSTNER AVENUE

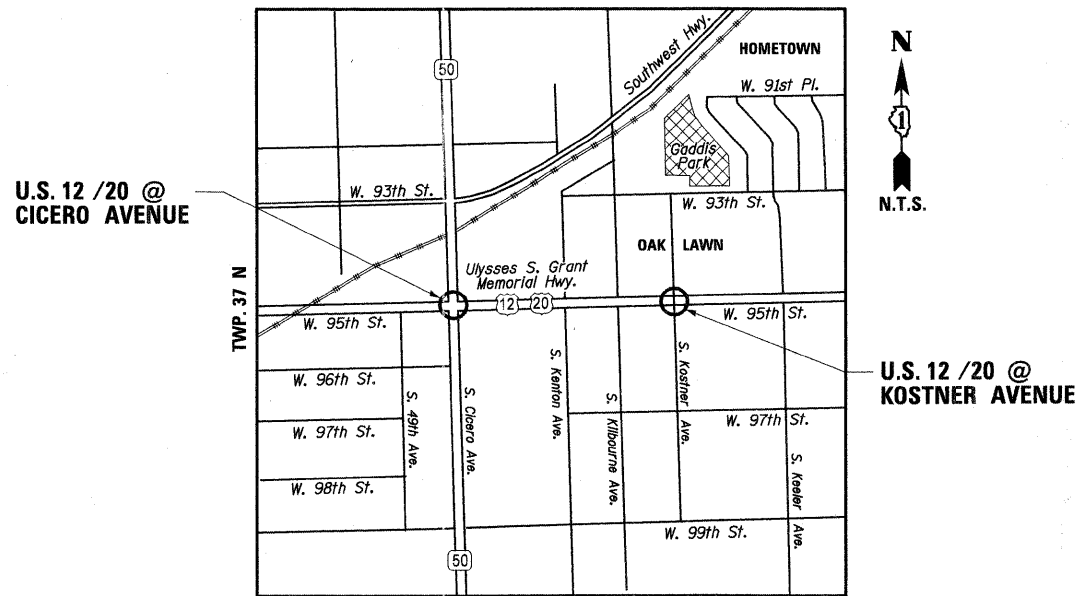
F.A.P. ROUTE 029 / U.S. ROUTE 12 /20 (95TH STREET)

COOK COUNTY

SECTION 2011-038-TS

C-91-542-11

PROJECT: HSIP-0029 (114)



R. 13 E
LOCATION MAP



Bruce P. Talbot
Expires 11-30-13 DATE: 10-21-11

PREPARED BY:
CEMCON, Ltd.
Consulting Engineers, Land Surveyors & Planners
2280 White Oak Circle, Suite 100
Aurora, Illinois 60504-9975
Ph: 630.862.2100 Fax: 630.862.2199
E-Mail: cadd@cemcon.com Website: www.cemcon.com

F.A.P. RTE.	SECTION	COUNTY	TOTAL SHEETS	SHEET NO.
029	2011-038-TS	COOK	21	1
FED. ROAD DIST. NO.		ILLINOIS	CONTRACT NO. 60P44	

P-91-535-11
D-91-542-11



STATE OF ILLINOIS
DEPARTMENT OF TRANSPORTATION
DIVISION OF HIGHWAYS

SUBMITTED Oct. 27 20 11

Shane M. O'Keefe
DEPUTY DIRECTOR OF HIGHWAYS, REGION ENGINEER

December 9 20 11
Scott E. Stitt, P.E.
acting ENGINEER OF DESIGN AND ENVIRONMENT

December 9 20 11
William R. Furey
DIRECTOR OF HIGHWAYS, CHIEF ENGINEER

**PRINTED BY THE AUTHORITY
OF THE STATE OF ILLINOIS**