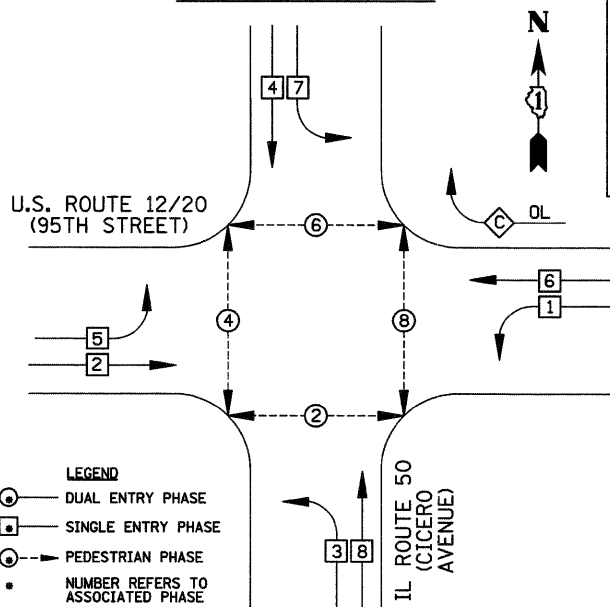
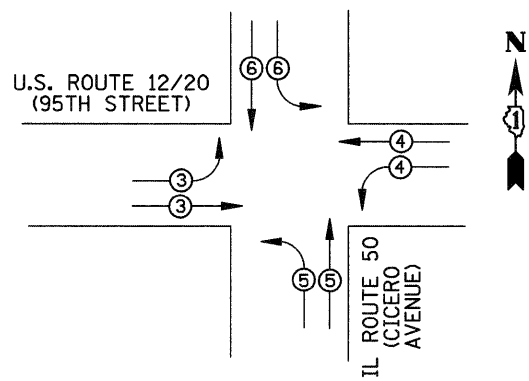


CONTROLLER SEQUENCE



PHASE DESIGNATION DIAGRAM

OVERLAP LETTER	PERMISSIVE PHASE	PROTECTED PHASE
C	= 6	+ 7



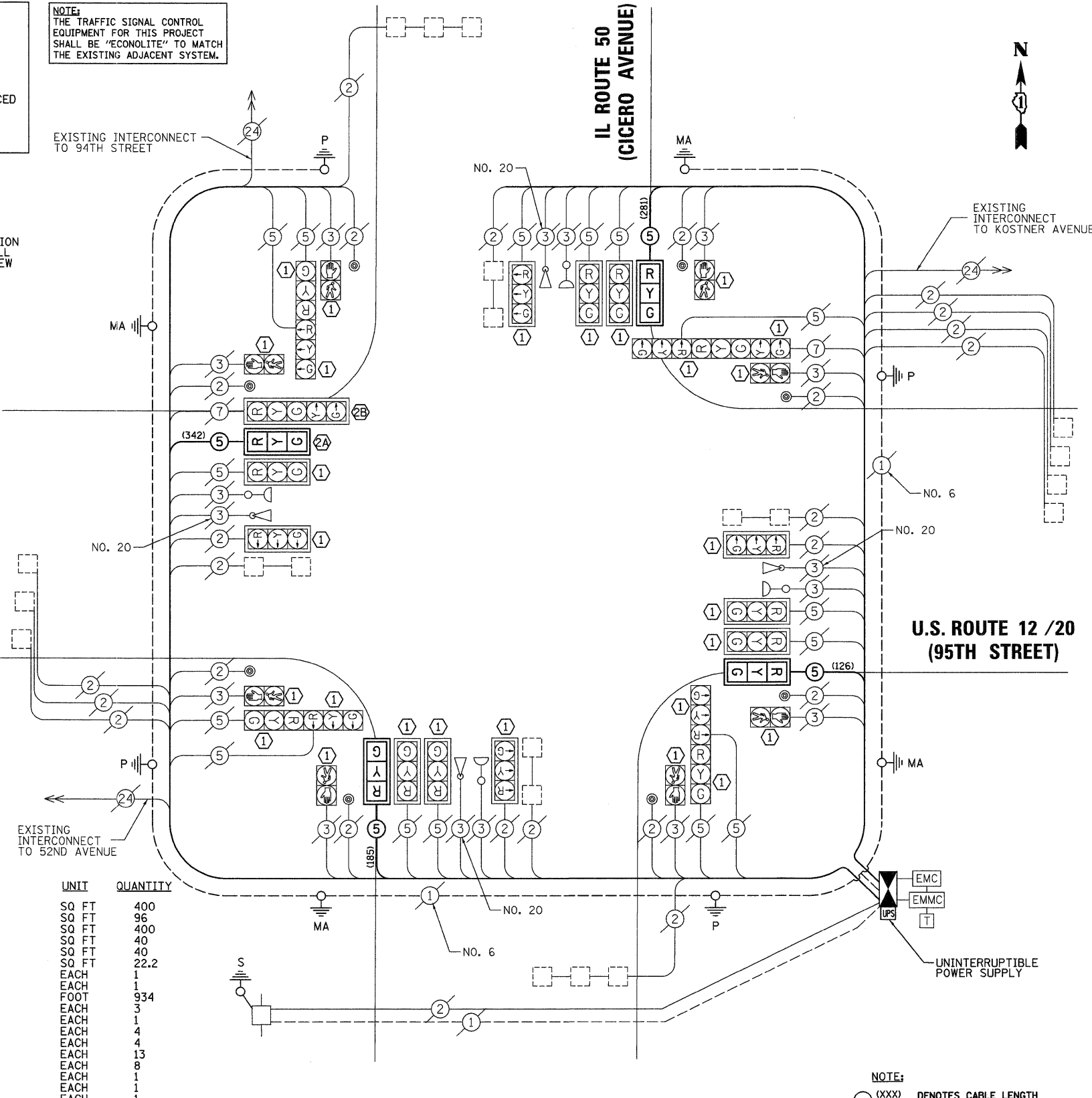
PROPOSED EMERGENCY VEHICLE PREEMPTORS				
EMERGENCY VEHICLE PREEMPTOR	3	4	5	6
MOVEMENT	→	←	↑	↓

EMERGENCY VEHICLE PREEMPTION SEQUENCE

RESTORATION OF WORK AREA
 RESTORATION OF THE TRAFFIC SIGNAL WORK AREA SHALL BE INCIDENTAL TO THE RELATED PAY ITEM SUCH AS FOUNDATION, CONDUIT, HANDHOLE, TRENCH AND BACKFILL, ETC., AND NO EXTRA COMPENSATION SHALL BE ALLOWED. ALL ROADWAY SURFACES SUCH AS SHOULDERS, MEDIANS, SIDEWALKS, PAVEMENT, ETC. SHALL BE REPLACED IN KIND. ALL DAMAGE TO MOWED LAWNS SHALL BE REPLACED WITH AN APPROVED SOD, AND ALL DAMAGE TO UNMOWED FIELDS SHALL BE SEEDDED IN ACCORDANCE WITH STANDARD SPECIFICATIONS 252 AND 250 RESPECTIVELY.

- CONSTRUCTION NOTES:**
- RETROFIT EXISTING SIGNAL HEAD WITH NEW LED MODULES. PEDESTRIAN SIGNALS SHALL INCLUDE COUNTDOWN MODULES.
 - REMOVE EXISTING 5-SECTION SIGNAL HEAD AT LOCATION 2A, RETROFIT WITH NEW LED MODULES, AND REINSTALL AT LOCATION 2B, USING EXISTING CABLE. INSTALL NEW 3-SECTION HEAD AT LOCATION 2A.

NOTE:
 THE TRAFFIC SIGNAL CONTROL EQUIPMENT FOR THIS PROJECT SHALL BE "ECONOLITE" TO MATCH THE EXISTING ADJACENT SYSTEM.



CABLE PLAN

NOTE:
 (XXX) DENOTES CABLE LENGTH TO CONTROLLER CABINET WITH SLACK CABLE.

SCHEDULE OF QUANTITIES

UNIT	QUANTITY
SQ FT	400
SQ FT	96
SQ FT	400
SQ FT	40
SQ FT	40
SQ FT	22.2
EACH	1
FOOT	934
EACH	3
EACH	1
EACH	4
EACH	4
EACH	13
EACH	8
EACH	1
EACH	1
EACH	1
EACH	1
EACH	11
EACH	1
EACH	3
EACH	2
SQ FT	25.7
EACH	8
EACH	1

- ITEM**
- PORTLAND CEMENT CONCRETE SIDEWALK, 5"
 - DETECTABLE WARNINGS
 - SIDEWALK REMOVAL
 - SIGN PANEL, TYPE 1
 - REMOVE SIGN PANEL - TYPE 1
 - RELOCATE SIGN PANEL - TYPE 1
 - MAINTENANCE OF EXISTING TRAFFIC SIGNAL INSTALLATION
 - TRANSCIVER - FIBER OPTIC
 - ELECTRIC CABLE IN CONDUIT, SIGNAL NO. 14 5C
 - TRAFFIC SIGNAL POST, GALVANIZED STEEL 14 FT.
 - TRAFFIC SIGNAL POST, GALVANIZED STEEL 16 FT.
 - SIGNAL HEAD, LED, 1-FACE, 3-SECTION, MAST-ARM MOUNTED
 - TRAFFIC SIGNAL BACKPLATE, LOUVERED, ALUMINUM
 - INDUCTIVE LOOP DETECTOR
 - PEDESTRIAN PUSH BUTTON
 - RELOCATE EXISTING SIGNAL HEAD
 - RELOCATE EXISTING EMERGENCY VEHICLE PRIORITY SYSTEM, PHASING UNIT
 - REMOVE EXISTING TRAFFIC SIGNAL EQUIPMENT
 - FULL-ACTUATED CONTROLLER AND TYPE V CABINET, SPECIAL
 - SIGNAL HEAD, LED, 2-FACE, 1-3 SECTION, 1-5 SECTION, BRACKET MOUNTED, RETROFIT
 - SIGNAL HEAD, LED, 1-FACE, 3-SECTION, MAST ARM MOUNTED, RETROFIT
 - SIGNAL HEAD, LED, 1-FACE, 5-SECTION, MAST ARM MOUNTED, RETROFIT
 - SIGNAL HEAD, LED, 2-FACE, 3-SECTION, BRACKET MOUNTED, RETROFIT
 - RELOCATE EXISTING MASTER CONTROLLER
 - TEMPORARY INFORMATION SIGNING
 - PEDESTRIAN SIGNAL HEAD, LED, 1-FACE, BRACKET MOUNTED RETROFIT
 - UNINTERRUPTIBLE POWER SUPPLY SPECIAL
- 100% COST TO THE VILLAGE OF OAK LAWN

I.D.O.T. TRAFFIC SIGNAL INSTALLATION ELECTRICAL SERVICE REQUIREMENTS					TOTAL WATTAGE
TYPE	NO. LAMPS	WATTAGE INCAND.	LED	%OPERATION	
SIGNAL (RED)	24	135	17	0.50	204
(YELLOW)	16	135	25	0.25	100
(GREEN)	16	135	15	0.25	60
ARROW	18	135	12	0.10	21.6
PED. SIGNAL	8	90	25	1.00	200
CONTROLLER	1	100	100	1.00	100
ILLUM. SIGN		84		0.05	

FLASHER		135	25	0.50	
ENERGY COSTS TO:					TOTAL =
50% I.D.O.T.					685.6
50% VILLAGE OF OAK LAWN					

ENERGY SUPPLY CONTACT: KATHRYN SUGRUE
 PHONE: (708) 235-2337
 COMPANY: COMED

FILE NAME = USER NAME = JGC
 \MICROST\352898\ 95TH & CICERO CAB.DGN
 PLOT SCALE = 1"=20'
 PLOT DATE = 10-21-11

DESIGNED - BPT	REVISED -
DRAWN - JGC	REVISED -
CHECKED - BPT	REVISED -
DATE - 10-21-11	REVISED -

STATE OF ILLINOIS DEPARTMENT OF TRANSPORTATION

SCHEDULE OF QUANTITIES, CABLE PLAN AND PHASE DESIGNATION DIAGRAM
U.S. ROUTE 12 /20 (95TH STREET) AT IL ROUTE 50 (CICERO AVENUE)
 SCALE: N.T.S. SHEET NO. OF SHEETS STA. TO STA.

PREPARED BY:
CEMCON, Ltd.
 Consulting Engineers, Land Surveyors & Planners
 2280 White Oak Circle, Suite 100
 Aurora, Illinois 60504-9875
 Ph: 630.862.2100 Fax: 630.862.2199
 E-Mail: cadd@cemcon.com Website: www.cemcon.com

F.A.P. RTE.	SECTION	COUNTY	TOTAL SHEETS	SHEET NO.
029	2011-038-TS	COOK	21	11
CONTRACT NO. 60P44				
FED. ROAD DIST. NO. ILLINOIS FED. AID PROJECT				