

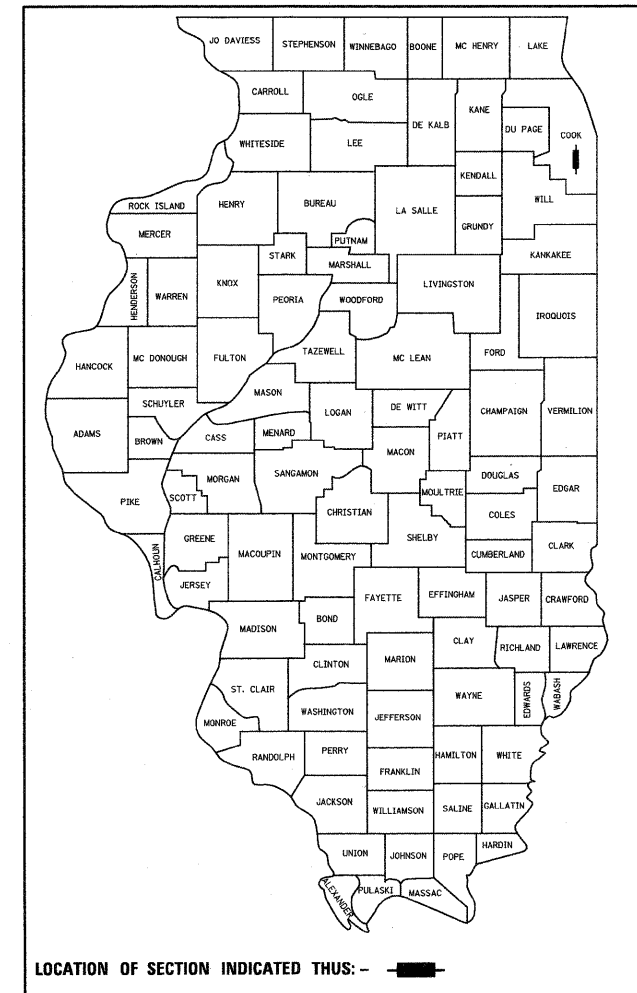
F.A.P. RTE.	SECTION	COUNTY	TOTAL SHEETS	SHEET NO.
348	2011-039-TS	COOK	20	1
FED. ROAD DIST. NO.		ILLINOIS	CONTRACT NO. 60P45	
			#20+1=21	D-91-543-11

INDEX OF SHEETS

1. TITLE SHEET
2. GENERAL NOTES
3. SUMMARY OF QUANTITIES
- 4.-9. DISTRICT ONE STANDARD TRAFFIC SIGNAL DESIGN DETAILS
10. TEMPORARY TRAFFIC SIGNAL INSTALLATION AND REMOVAL PLAN
IL ROUTE 43 (HARLEM AVENUE) AT WHEELER DRIVE
11. TEMPORARY CABLE PLAN AND PHASE DESIGNATION DIAGRAM
IL ROUTE 43 (HARLEM AVENUE) AT WHEELER DRIVE
12. TRAFFIC SIGNAL MODERNIZATION PLAN
IL ROUTE 43 (HARLEM AVENUE) AT WHEELER DRIVE
13. SCHEDULE OF QUANTITIES, CABLE PLAN AND PHASE DESIGNATION DIAGRAM
IL ROUTE 43 (HARLEM AVENUE) AT WHEELER DRIVE
14. TRAFFIC SIGNAL MODERNIZATION AND REMOVAL PLAN
IL ROUTE 43 (HARLEM AVENUE) AT 157TH STREET
15. SCHEDULE OF QUANTITIES, CABLE PLAN AND PHASE DESIGNATION DIAGRAM
IL ROUTE 43 (HARLEM AVENUE) AT 157TH STREET
16. TEMPORARY INTERCONNECT SCHEMATIC
IL ROUTE 43 (HARLEM AVENUE)
- 17.-18. INTERCONNECT PLAN
IL ROUTE 43 (HARLEM AVENUE)
19. INTERCONNECT SCHEMATIC
IL ROUTE 43 (HARLEM AVENUE)
20. MAST ARM MOUNTED STREET NAME SIGNS
IL ROUTE 43 (HARLEM AVENUE) AT WHEELER DRIVE / 157TH STREET

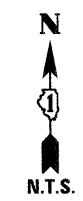
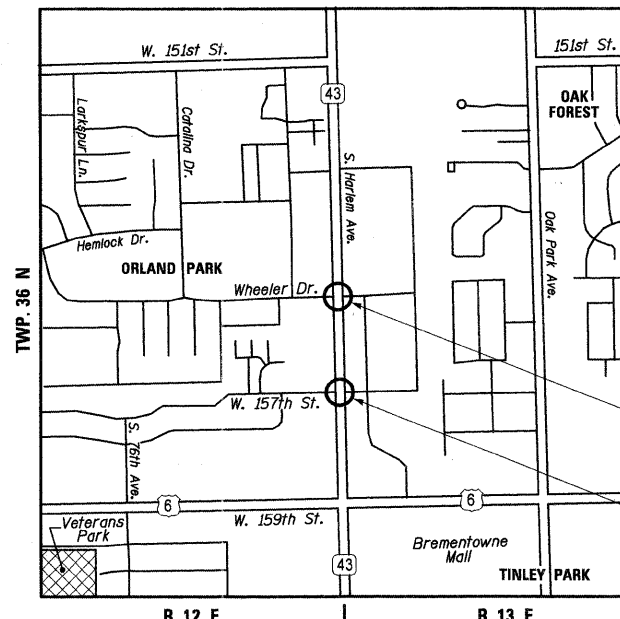
STATE OF ILLINOIS
DEPARTMENT OF TRANSPORTATION
DIVISION OF HIGHWAYS
**PLANS FOR PROPOSED
FEDERAL AID HIGHWAY**
DISTRICT 1
HIGHWAY SAFETY IMPROVEMENT PROJECT
IL ROUTE 43 (HARLEM AVENUE) AT
WHEELER DRIVE AND 157TH STREET
F.A.P. ROUTE 348 / IL ROUTE 43 (HARLEM AVENUE)
COOK COUNTY
SECTION 2011-039-TS
C-91-543-11

PROJ. HSIP-0348 (047)



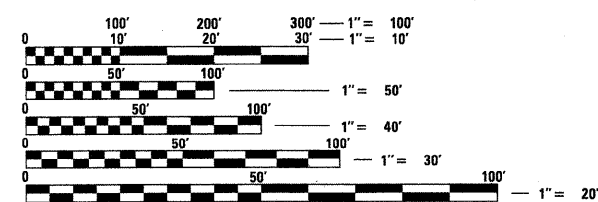
IDOT STANDARDS:

- 701101-02 OFF-ROAD OPERATIONS, MULTILANE, 4.5 m (15') TO 600 mm (24") FROM PAVEMENT EDGE
- 701106-02 OFF-ROAD OPERATIONS, 2L, 2W, 4.5 m (15') TO 600 mm (24") FROM PAVEMENT EDGE
- 701421-04 LANE CLOSURE, MULTILANE, DAY OPERATIONS ONLY, FOR SPEEDS > 45 MPH TO 55 MPH
- 701501-06 URBAN LANE CLOSURE, 2L, 2W, UNDIVIDED
- 701701-08 URBAN LANE CLOSURE, MULTILANE INTERSECTION
- 701901-02 TRAFFIC CONTROL DEVICES
- 720001-01 SIGN PANEL MOUNTING DETAILS
- 814001-02 HANDHOLES
- 814006-02 DOUBLE HANDHOLES
- 857001-01 STANDARD PHASE DESIGNATION DIAGRAMS AND PHASE SEQUENCES
- 886001-01 DETECTOR LOOP INSTALLATION
- 862001-01 UNINTERRUPTIBLE POWER SUPPLY (UPS)
- 877001-05 STEEL MAST ARM ASSEMBLY AND POLE 16" THROUGH 55"
- 877011-05 STEEL COMB. MAST ARM ASSEMBLY AND POLE 16" THROUGH 55"
- 878001-09 CONCRETE FOUNDATION DETAILS
- 880001-01 SPAN WIRE MOUNTED SIGNALS AND FLASHING BEACON INSTALLATION
- 880006-01 TRAFFIC SIGNAL MOUNTING DETAILS



IL ROUTE 43 @
WHEELER DRIVE

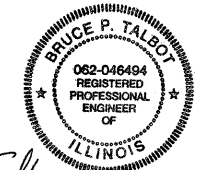
IL ROUTE 43 @
157TH STREET



FULL SIZE PLANS HAVE BEEN PREPARED USING STANDARD ENGINEERING SCALES. REDUCED SIZED PLANS WILL NOT CONFORM TO STANDARD SCALES. IN MAKING MEASUREMENTS ON REDUCED PLANS, THE ABOVE SCALES MAY BE USED.

J.U.L.I.E.
JOINT UTILITY LOCATING INFORMATION FOR EXCAVATORS
1-800-892-0123
OR 811

CONTRACT NO. 60P45



Bruce P. Talbot
Expires 11-30-13 DATE: 10-21-11

PREPARED BY:
CEMCON, Ltd.
Consulting Engineers, Land Surveyors & Planners
2280 White Oak Circle, Suite 100
Aurora, Illinois 60504-9675
Ph: 630.862.2100 Fax: 630.862.2199
E-Mail: cadd@cemcon.com Website: www.cemcon.com

STATE OF ILLINOIS
DEPARTMENT OF TRANSPORTATION
DIVISION OF HIGHWAYS

SUBMITTED Oct 27 2011
Norm M. Orsini
DEPUTY DIRECTOR OF HIGHWAYS, REGION ENGINEER

December 9 2011
Scott E. Stitt, P.E.
acting ENGINEER OF DESIGN AND ENVIRONMENT

December 9 2011
William R. Frey, Jr.
interim DIRECTOR OF HIGHWAYS, CHIEF ENGINEER

**PRINTED BY THE AUTHORITY
OF THE STATE OF ILLINOIS**

BUREAU OF TRAFFIC, DISTRICT ONE: STEPHEN TRAVIA / DARYLE DREW (847) 705-4424