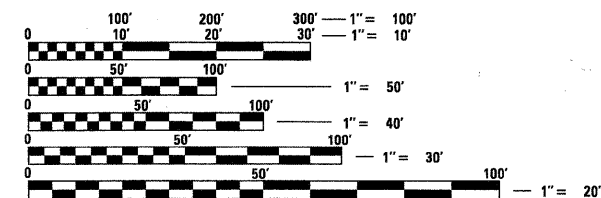


INDEX OF SHEETS

1. TITLE SHEET
2. GENERAL NOTES
3. SUMMARY OF QUANTITIES
- 4.-9. DISTRICT ONE STANDARD TRAFFIC SIGNAL DESIGN DETAILS
10. TEMPORARY TRAFFIC SIGNAL INSTALLATION AND REMOVAL PLAN
IL ROUTE 83 (TORRENCE AVENUE) AT GLENWOOD DYER ROAD
11. TEMPORARY CABLE PLAN AND PHASE DESIGNATION DIAGRAM
IL ROUTE 83 (TORRENCE AVENUE) AT GLENWOOD DYER ROAD
12. TRAFFIC SIGNAL MODERNIZATION PLAN
IL ROUTE 83 (TORRENCE AVENUE) AT GLENWOOD DYER ROAD
13. SCHEDULE OF QUANTITIES, CABLE PLAN AND PHASE DESIGNATION DIAGRAM
IL ROUTE 83 (TORRENCE AVENUE) AT GLENWOOD DYER ROAD
14. MAST ARM MOUNTED STREET NAME SIGNS
IL ROUTE 83 (TORRENCE AVENUE) / GLENWOOD DYER ROAD

IDOT STANDARDS:

- 701101-02 OFF-ROAD OPERATIONS, MULTILANE, 4.5 m (15') TO 600 mm (24") FROM PAVEMENT EDGE
- 701106-02 OFF-ROAD OPERATIONS, 2L, 2W, 4.5 m (15') TO 600 mm (24") FROM PAVEMENT EDGE
- 701421-04 LANE CLOSURE, MULTILANE, DAY OPERATIONS ONLY, FOR SPEEDS > 45 MPH TO 55 MPH
- 701501-06 URBAN LANE CLOSURE, 2L, 2W, UNDIVIDED
- 701701-08 URBAN LANE CLOSURE, MULTILANE INTERSECTION
- 701901-02 TRAFFIC CONTROL DEVICES
- 720001-01 SIGN PANEL MOUNTING DETAILS
- 814001-02 HANDHOLES
- 814006-02 DOUBLE HANDHOLES
- 857001-01 STANDARD PHASE DESIGNATION DIAGRAMS AND PHASE SEQUENCES
- 866001-01 DETECTOR LOOP INSTALLATION
- 862001-01 UNINTERRUPTIBLE POWER SUPPLY (UPS)
- 877001-05 STEEL MAST ARM ASSEMBLY AND POLE 16' THROUGH 55'
- 877011-05 STEEL COMB. MAST ARM ASSEMBLY AND POLE 16' THROUGH 55'
- 878001-09 CONCRETE FOUNDATION DETAILS
- 880001-01 SPAN WIRE MOUNTED SIGNALS AND FLASHING BEACON INSTALLATION
- 880006-01 TRAFFIC SIGNAL MOUNTING DETAILS



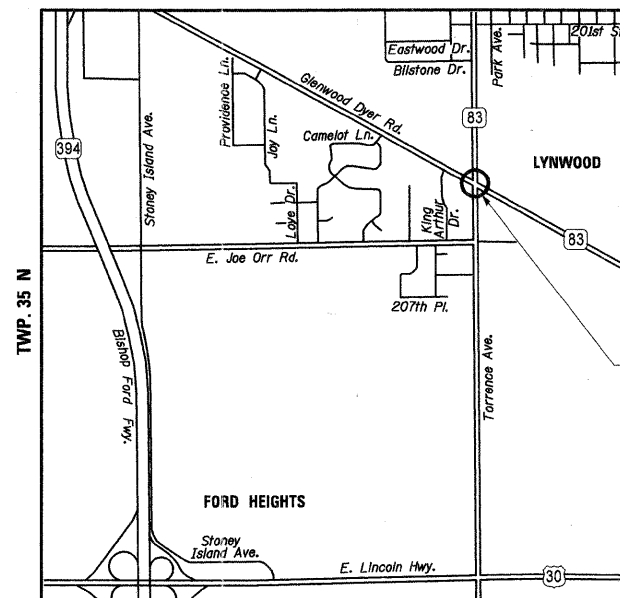
FULL SIZE PLANS HAVE BEEN PREPARED USING STANDARD ENGINEERING SCALES. REDUCED SIZED PLANS WILL NOT CONFORM TO STANDARD SCALES. IN MAKING MEASUREMENTS ON REDUCED PLANS, THE ABOVE SCALES MAY BE USED.

J.U.L.I.E.
JOINT UTILITY LOCATING INFORMATION FOR EXCAVATORS
1-800-892-0123
OR 811

CONTRACT NO. 60P46

BUREAU OF TRAFFIC, DISTRICT ONE: STEPHEN TRAVIA / DARYLE DREW (847) 705-4424

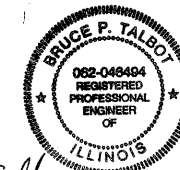
STATE OF ILLINOIS
DEPARTMENT OF TRANSPORTATION
DIVISION OF HIGHWAYS
**PLANS FOR PROPOSED
FEDERAL AID HIGHWAY**
DISTRICT 1
HIGHWAY SAFETY IMPROVEMENT PROJECT
IL ROUTE 83 (TORRENCE AVENUE) @
GLENWOOD DYER ROAD
F.A.U. ROUTE 2937 / IL ROUTE 83 (TORRENCE AVENUE)
COOK COUNTY *Proj. HSIP-2937(005)*
SECTION 2011-040-TS
PROJECT NO. C-91-544-11



R. 15 E
LOCATION MAP



**IL ROUTE 83
(TORRENCE AVENUE) @
GLENWOOD DYER ROAD**



Bruce P. Talleo
Expires 11-30-13 DATE: 10-21-11

PREPARED BY:
CEMCON, Ltd.
Consulting Engineers, Land Surveyors & Planners
2280 White Oak Circle, Suite 100
Aurora, Illinois 60504-9675
Ph: 630.862.2100 Fax: 630.862.2199
E-Mail: cadd@cemcon.com Website: www.cemcon.com

F.A.U. RTE.	SECTION	COUNTY	TOTAL SHEETS	SHEET NO.
2937	2011-040-TS	COOK	14	1
FED. ROAD DIST. NO.		ILLINOIS	CONTRACT NO. 60P46	

**14+1=15*
P-91-536-11
D-91-544-11



LOCATION OF SECTION INDICATED THIS: - [black rectangle]

STATE OF ILLINOIS
DEPARTMENT OF TRANSPORTATION
DIVISION OF HIGHWAYS

SUBMITTED *Oct 27* 2011
Darin M. Olney
DEPUTY DIRECTOR OF HIGHWAYS, REGION ENGINEER

December 9 2011
Scott E. Still P.E.
Acting ENGINEER OF DESIGN AND ENVIRONMENT

December 9 2011
William R. Frey
DIRECTOR OF HIGHWAYS, CHIEF ENGINEER

**PRINTED BY THE AUTHORITY
OF THE STATE OF ILLINOIS**