

ROUTE	SECTION	COUNTY	SHEETS	NUMBER
VARIOUS	2011-050-I	COOK	69	13

CONTRACT NO. 60P60

TRAFFIC DATA

IL 83 (SIBLEY BLVD)
 2009 ADT = 37000
 POSTED SPEED LIMIT = 35 MPH
I-94 BISHOP FORD EXPY
 2009 ADT = 148000
 POSTED SPEED LIMIT = 55 MPH

MICHIGAN CITY RD
 2010 ADT = 9300
 POSTED SPEED LIMIT = 35 MPH
I-94 BISHOP FORD EXPY
 2009 ADT = 133500
 POSTED SPEED LIMIT = 55 MPH

154TH ST
 2006 ADT = 8200
 POSTED SPEED LIMIT = 35 MPH
I-94 BISHOP FORD EXPY
 2009 ADT = 140500
 POSTED SPEED LIMIT = 55 MPH

159TH ST (US 6)
 2009 ADT = 32100
 POSTED SPEED LIMIT = 35 MPH
I-94 BISHOP FORD EXPY
 2009 ADT = 140000
 POSTED SPEED LIMIT = 55 MPH

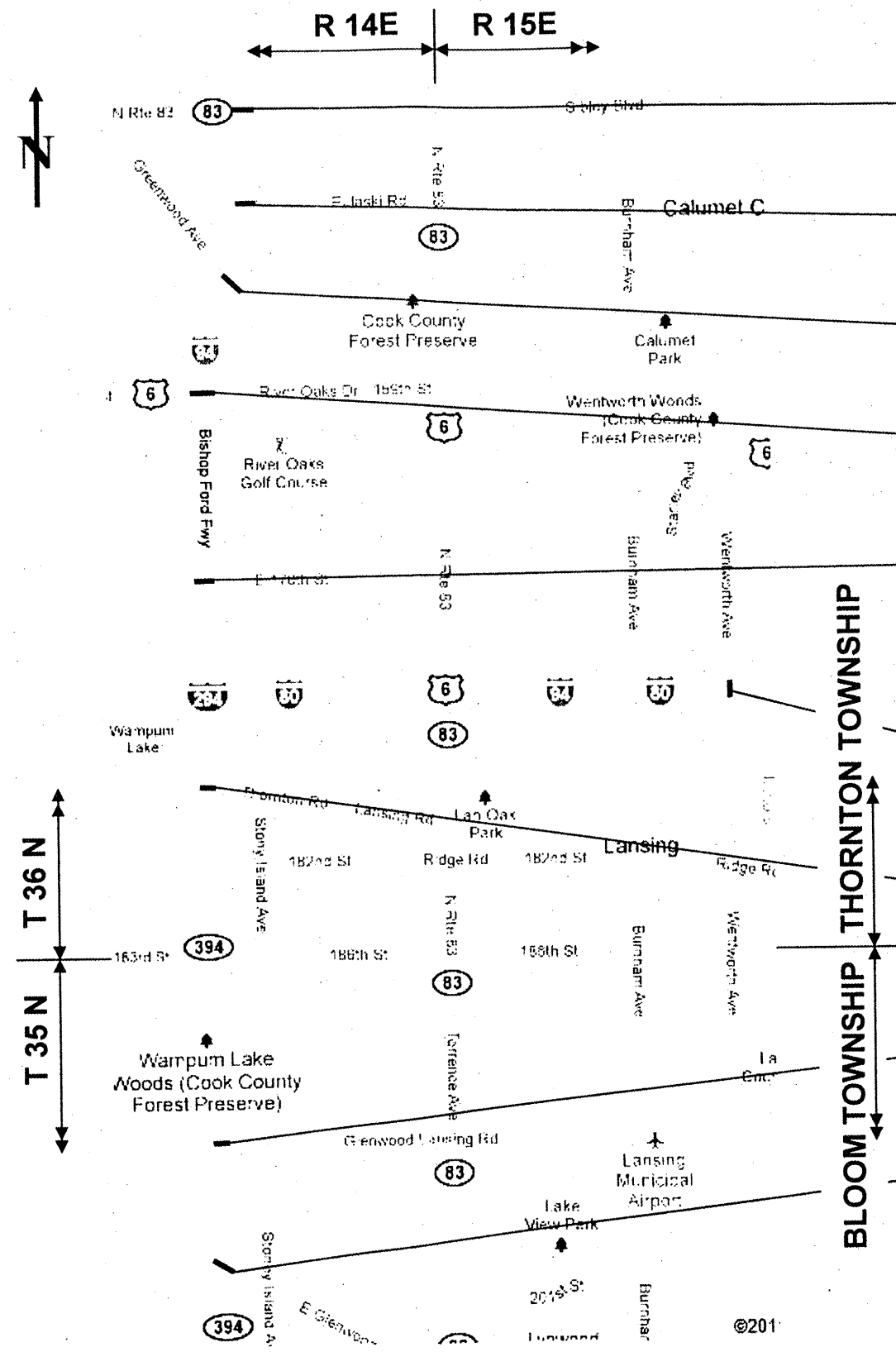
170TH ST
 2010 ADT = 10300
 POSTED SPEED LIMIT = 35 MPH
I-94 BISHOP FORD EXPY
 2009 ADT = 137000
 POSTED SPEED LIMIT = 55 MPH

WENTWORTH AVE
 2010 ADT = 8300
 POSTED SPEED LIMIT = 35 MPH
I-80/94
 2009 ADT = 135600
 POSTED SPEED LIMIT = 55 MPH

THORNTON-LANSING RD
 2010 ADT = 7200
 POSTED SPEED LIMIT = 45 MPH
IL 394
 2009 ADT = 64900
 POSTED SPEED LIMIT = 55 MPH

GLENWOOD-LANSING RD
 2010 ADT = 7000
 POSTED SPEED LIMIT = 45 MPH
IL 394
 2009 ADT = 64900
 POSTED SPEED LIMIT = 55 MPH

GLENWOOD-DYER RD
 2010 ADT = 11800
 POSTED SPEED LIMIT = 40 MPH
IL 394
 2009 ADT = 54000
 POSTED SPEED LIMIT = 55 MPH



LOCATION 42: SN 016-0956
 SIBLEY BLVD over I-94

LOCATION 43: SN 016-1068
 MICHIGAN CITY RD over I-94

LOCATION 44: SN 016-0914
 154TH ST over I-94

LOCATION 45: SN 016-0388
 159TH ST over I-94

LOCATION 46: SN 016-2803
 170TH ST over I-94

LOCATION 47: SN 016-2790
 WENTWORTH AVE over I-80/94

LOCATION 48: SN 016-2799
 THORNTON-LANSING RD over IL394

LOCATION 49: SN 016-0918
 GLENWOOD-LANSING RD over IL394

LOCATION 50: SN 016-0624
 GLENWOOD-DYER RD over IL394

**ILLINOIS DEPARTMENT OF
 TRANSPORTATION**

**LOCATION MAP 5
 LOCATIONS 42 - 50**