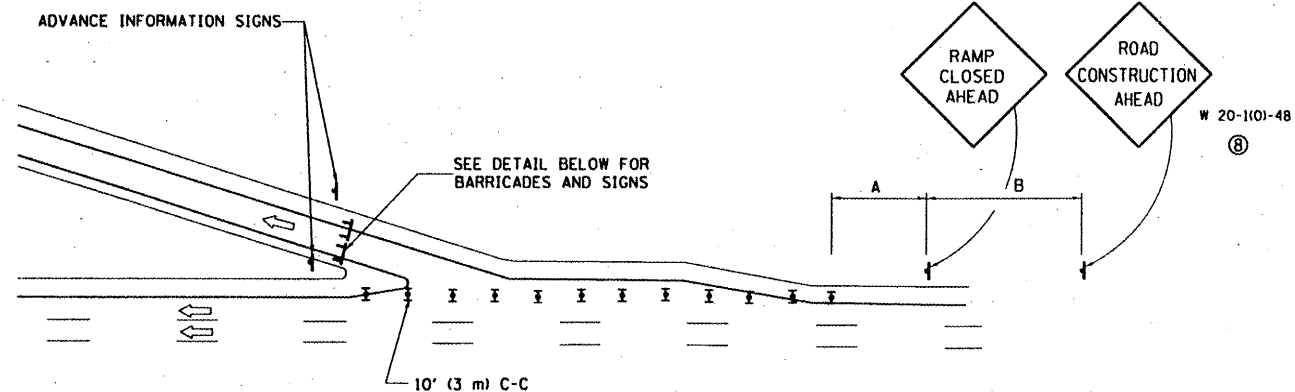
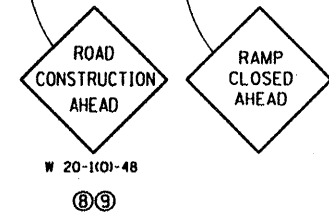


**ENTRANCE RAMP CLOSURE**

**SIGN SPACING TABLE**

FACILITY	DISTANCE BETWEEN SIGNS	
	A	B
EXPRESSWAY >24 HOURS	1000' (300 m)	1500' (450 m)
EXPRESSWAY ≤24 HOURS	500' (150 m)	500' (150 m)
ARTERIAL ≥45 MPH	350' (100 m)	350' (100 m)
ARTERIAL <45 MPH	150' (45 m)	150' (45 m)

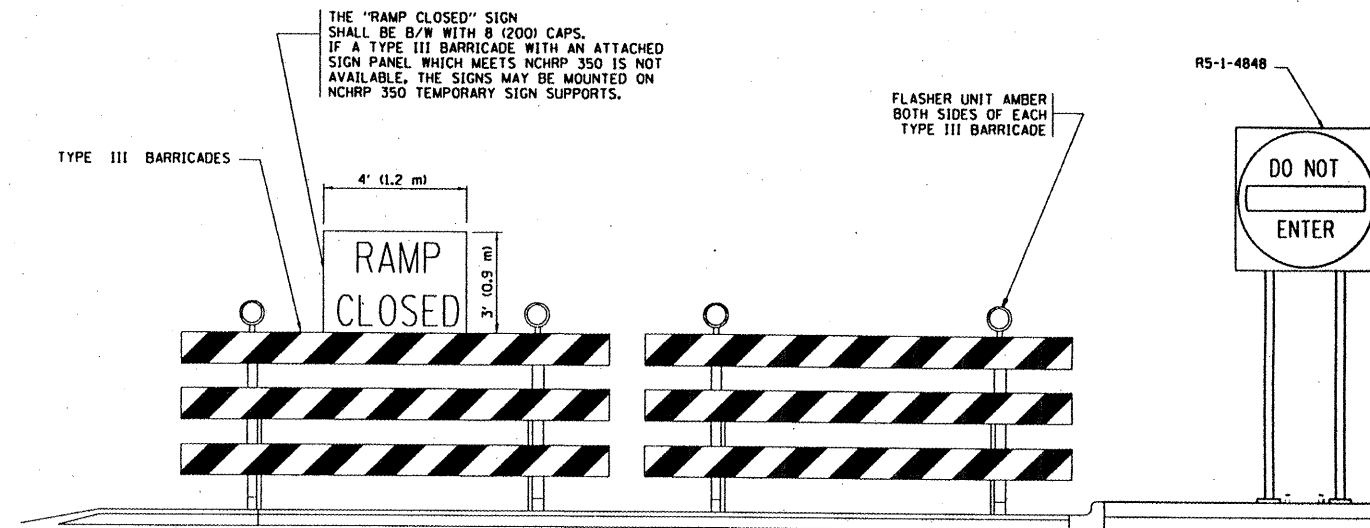
DISTANCES MAY BE SHORTENED DEPENDING UPON THE PROXIMITY OF ADJACENT RAMPS OR INTERSECTIONS.



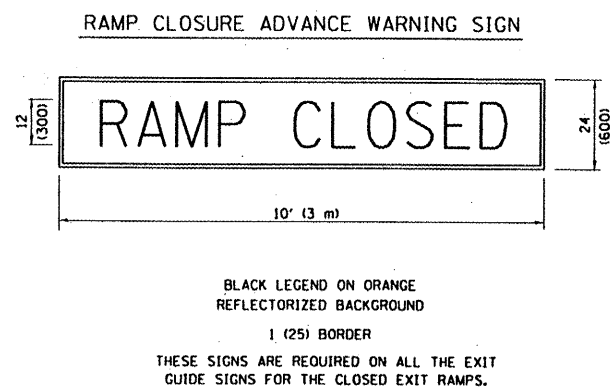
**EXIT RAMP CLOSURE**

**SYMBOLS**

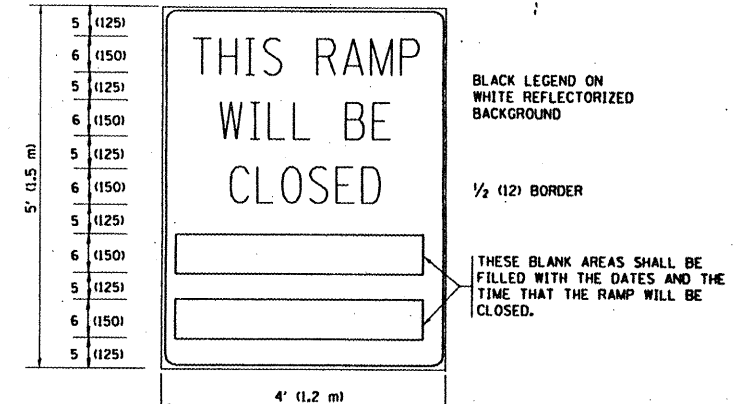
- I TYPE II BARRICADE, DRUM OR VERTICAL BARRICADE WITH STEADY BURN MONO-DIRECTIONAL LIGHT
- ⌈ TYPE III BARRICADE WITH FLASHING LIGHT



**DETAIL FOR REQUIRED BARRICADES & SIGNS**



**RAMP CLOSURE ADVANCE INFORMATION SIGN**



THESE SIGNS ARE REQUIRED ON BOTH SIDES OF THE RAMP, MINIMUM OF 1 WEEK IN ADVANCE OF THE CLOSURE.

**GENERAL NOTES:**

- ① CONES MAY BE SUBSTITUTED FOR DRUMS OR TYPE II BARRICADES DURING DAY OPERATIONS. CONES SHALL BE A MINIMUM OF 28 (700) HIGH.
- ② STEADY BURN LIGHTS WILL NOT BE REQUIRED FOR DAY OPERATIONS.
- ③ A FLAGGER SHALL BE POSITIONED AT EACH CLOSED RAMP THAT IS OPEN TO CONSTRUCTION VEHICLES.
- ④ ALL ROUTE MARKERS AND TRAIL-BLAZER ASSEMBLIES WHICH DIRECT MOTORISTS TO A CLOSED ENTRANCE RAMP SHALL BE COVERED.
- ⑤ THE SIGNING AND BARRICADING WHICH IS REQUIRED BY THIS DETAIL SHALL BE INCLUDED IN THE COST OF TRAFFIC CONTROL AND PROTECTION (EXPRESSWAYS).
- ⑥ AUTHORIZATION FROM THE DISTRICT'S BUREAU OF TRAFFIC IS REQUIRED FOR ALL RAMP CLOSURES.
- ⑦ THE RAMP CLOSURE ADVANCE INFORMATION SIGNS SHALL BE ERECTED IF THE CLOSURE TIME EXCEEDS TWENTY-FOUR (24) HOURS. ADDITIONAL ADVANCE WARNING SIGNS ON EXIT GUIDE SIGNING WILL BE REQUIRED FOR EXIT RAMP CLOSURES THAT EXCEED TWENTY FOUR (24) HOURS IN LENGTH.
- ⑧ ROAD CONSTRUCTION AHEAD SIGNS MAY BE OMITTED WHEN THIS DETAIL IS USED IN CONJUNCTION WITH OTHER TRAFFIC CONTROL THAT ALREADY INCLUDES A ROAD CONSTRUCTION AHEAD SIGN.
- ⑨ ARTERIAL ROAD CONSTRUCTION AHEAD SIGNS MAY BE OMITTED ON CLOSURES LESS THAN 24 HOURS IN DURATION.

ALL DIMENSIONS ARE IN INCHES (MILLIMETERS) UNLESS OTHERWISE SHOWN.

FILE NAME: c:\pwwork\p1dot\mtharbc\0277574\01s	USER NAME: mtharbc	DESIGNED: DWS	REVISED: DWS/JAF 12-02
Std.dgn		DRAWN:	REVISED: JAF 02-06
PLOT SCALE: 1/8"=1'-0"		CHECKED:	REVISED: SPB 01-07
PLOT DATE: 8/30/2011		DATE: 02-83	REVISED: SPB 12-09

**STATE OF ILLINOIS  
DEPARTMENT OF TRANSPORTATION**

**FREEWAY ENTRANCE AND EXIT RAMP  
CLOSURE DETAILS**

SCALE: NONE SHEET NO. 1 OF 1 SHEETS STA. TO STA.

F.A. RTE. VAR.	SECTION	COUNTY	TOTAL SHEETS	SHEET NO.
	2011-050-1	COOK	69	65
	TC-08		CONTRACT NO. 60P60	
FED. ROAD DIST. NO. 1 ILLINOIS FED. AID PROJECT				