

STATE OF ILLINOIS  
DEPARTMENT OF TRANSPORTATION  
DIVISION OF HIGHWAYS

**PROPOSED  
HIGHWAY PLANS**

FOR INDEX OF SHEETS, SEE SHEET NO. 2

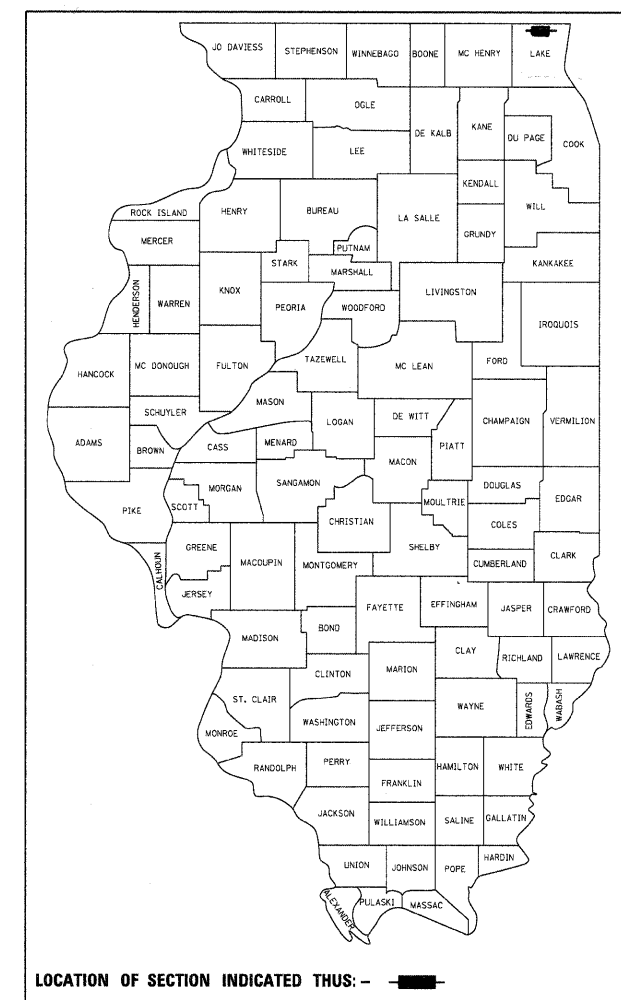
PROJECT LOCATED IN THE VILLAGE OF WADSWORTH

FAI ROUTE 94: INT 94/US 41 AT RUSSELL ROAD  
SECTION 2011-056-F

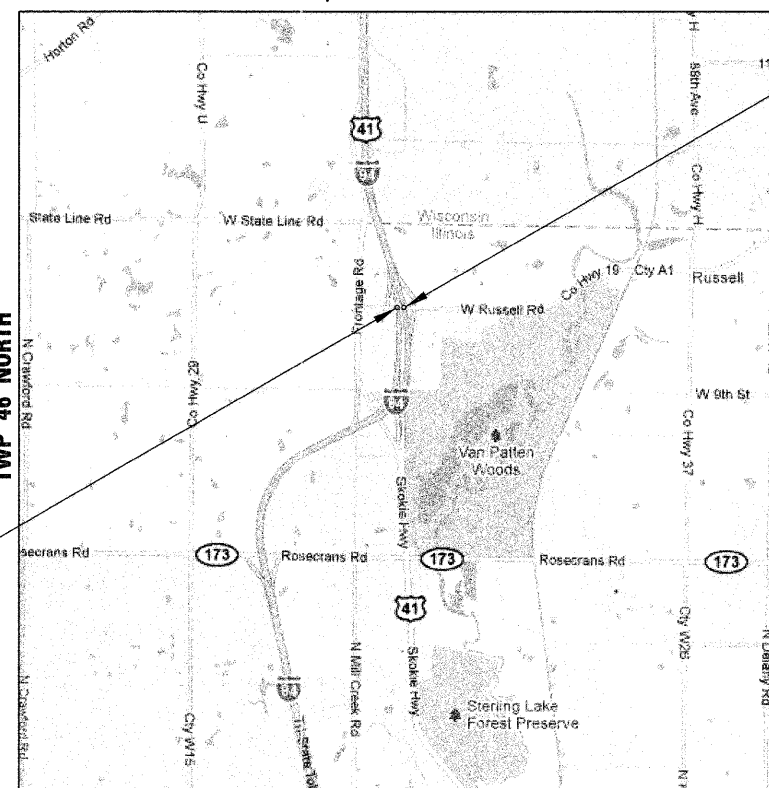
BRIDGE FABRICATION  
LAKE COUNTY  
C-91-605-11

F.A. RTE.	SECTION	COUNTY	TOTAL SHEETS	SHEET NO.
94	2011-056-F	LAKE	19	1
		ILLINOIS	CONTRACT NO. 60P69	

D-91-019-11

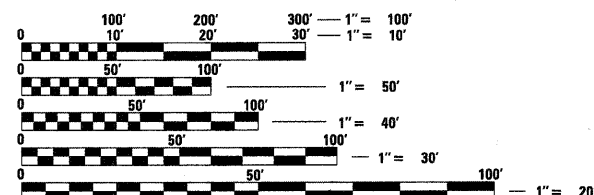


RANGE 11E, 3RD PRINCIPAL MERIDIAN



SN 049-0534  
PROPOSED SINGLE  
SPAN BRIDGE  
BEGIN STA 13 + 75.28  
END STA 15 + 11.28

SN 049-0533  
PROPOSED SINGLE  
SPAN BRIDGE  
BEGIN STA 11 + 77.02  
END STA 13 + 00.56



FULL SIZE PLANS HAVE BEEN PREPARED USING STANDARD ENGINEERING SCALES. REDUCED SIZED PLANS WILL NOT CONFORM TO STANDARD SCALES. IN MAKING MEASUREMENTS ON REDUCED PLANS, THE ABOVE SCALES MAY BE USED.

J.U.L.I.E.  
JOINT UTILITY LOCATION INFORMATION FOR EXCAVATION  
1-800-892-0123  
OR 811

~~PROJECT ENGINEER: MICHELLE AQUINO (847)705-4606~~  
PROJECT MANAGER: RAJENDRA SHAH (847)705-4555

CONTRACT NO. 60P69

GROSS LENGTH = 259.54 FT. = 0.049 MILE  
NET LENGTH = 259.54 FT. = 0.049 MILE



SIGNED: *Brian L. Umbright*  
DATE: July 5, 2011  
EXPIRES: NOVEMBER 30, 2012  
SHEETS: 1-11



SIGNED: *Clifton A. Gladstone*  
DATE: 7/5/2011  
EXPIRES: NOVEMBER 30, 2012  
SHEETS: 12-19

BOWMAN, BARRETT & ASSOCIATES INC.  
CONSULTING ENGINEERS  
Chicago, Illinois  
312.228.0100  
www.bbandainc.com

STATE OF ILLINOIS  
DEPARTMENT OF TRANSPORTATION  
DIVISION OF HIGHWAYS

SUBMITTED August 29, 2011  
*Devin M. O'Keefe*  
DEPUTY DIRECTOR OF HIGHWAYS, REGION ENGINEER  
December 9 2011  
*Scott E. Stitt P.E.*  
acting ENGINEER OF DESIGN AND ENVIRONMENT  
December 9 2011  
*William R. Fies*  
DIRECTOR OF HIGHWAYS, CHIEF ENGINEER

PRINTED BY THE AUTHORITY  
OF THE STATE OF ILLINOIS