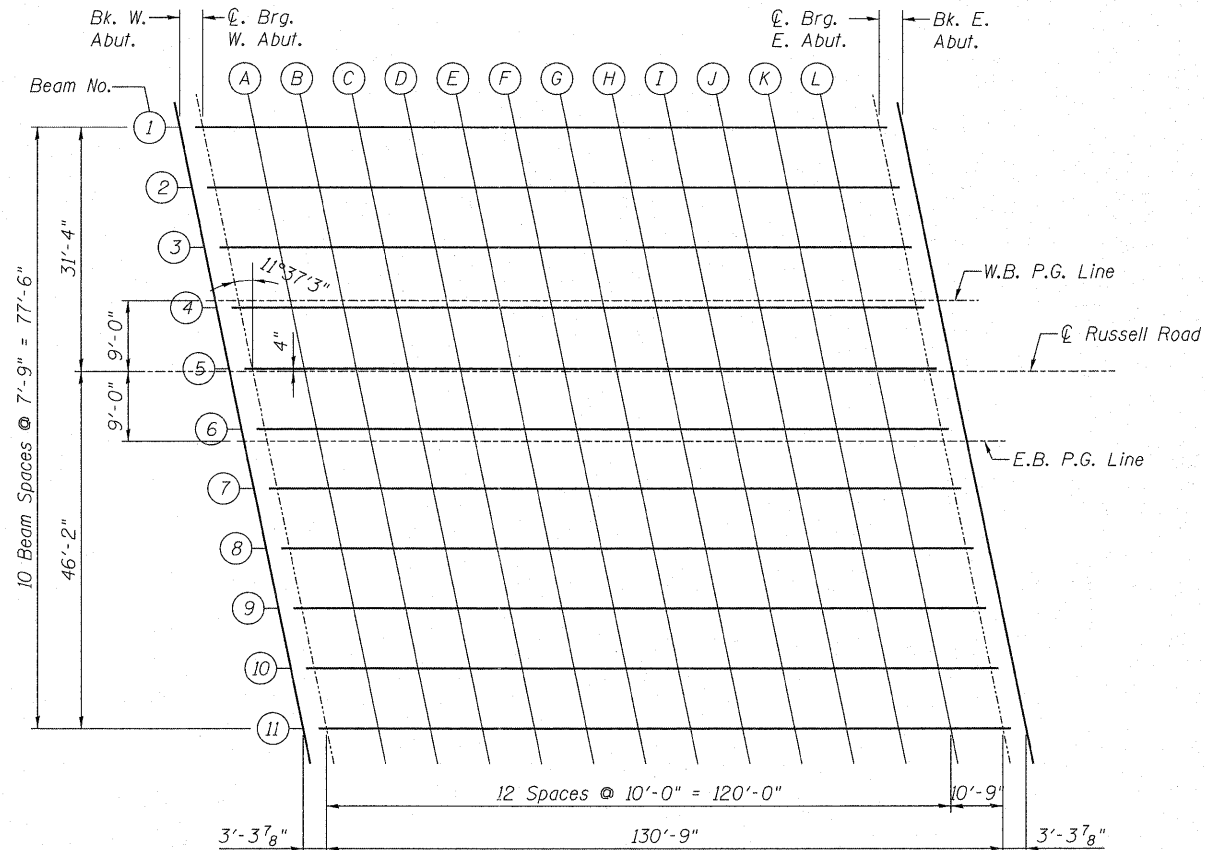


**DEAD LOAD DEFLECTION DIAGRAM**

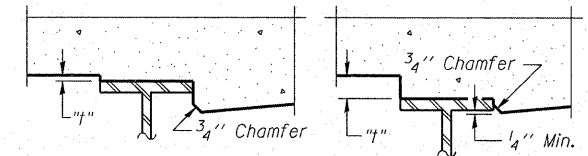
(Includes weight of concrete only.)

**Note:**

The above deflections are not to be used in the field if the engineer is working from the grade elevations adjusted for dead load deflections as shown below & sheet 05 & 06.



**PLAN**



To determine "t": After all structural steel has been erected, elevations of the top flanges of the beams shall be taken at intervals shown below. These elevations subtracted from the "Theoretical Grade Elevations Adjusted for Dead Load Deflection" shown below, minus slab thickness, equals the fillet heights "t" above top flange of beams.

**FILLET HEIGHTS**

**BEAM 1**

Location	Station	Offset	Theoretical Grade Elevations	Theoretical Grade Elevations Adjusted For Dead Load Deflection
BK. W. ABUT.	13+68.28	-31.33	757.84	757.84
CL. BRG. W. ABUT.	13+71.60	-31.33	757.80	757.80
A	13+81.60	-31.33	757.66	757.74
B	13+91.60	-31.33	757.52	757.67
C	14+01.60	-31.33	757.37	757.59
D	14+11.60	-31.33	757.22	757.49
E	14+21.60	-31.33	757.05	757.37
F	14+31.60	-31.33	756.89	757.22
G	14+41.60	-31.33	756.72	757.05
H	14+51.60	-31.33	756.54	756.85
I	14+61.60	-31.33	756.35	756.63
J	14+71.60	-31.33	756.16	756.38
K	14+81.60	-31.33	755.96	756.12
L	14+91.60	-31.33	755.76	755.84
CL. BRG. E. ABUT.	15+02.35	-31.33	755.53	755.53
BK. E. ABUT.	15+05.67	-31.33	755.46	755.46

**BEAM 2**

Location	Station	Offset	Theoretical Grade Elevations	Theoretical Grade Elevations Adjusted For Dead Load Deflection
BK. W. ABUT.	13+69.87	-23.58	757.98	757.98
CL. BRG. W. ABUT.	13+73.19	-23.58	757.94	757.94
A	13+83.19	-23.58	757.80	757.88
B	13+93.19	-23.58	757.66	757.81
C	14+03.19	-23.58	757.51	757.73
D	14+13.19	-23.58	757.35	757.62
E	14+23.19	-23.58	757.19	757.50
F	14+33.19	-23.58	757.02	757.35
G	14+43.19	-23.58	756.85	757.18
H	14+53.19	-23.58	756.67	756.98
I	14+63.19	-23.58	756.48	756.76
J	14+73.19	-23.58	756.29	756.51
K	14+83.19	-23.58	756.09	756.25
L	14+93.19	-23.58	755.89	755.97
CL. BRG. E. ABUT.	15+03.94	-23.58	755.66	755.66
BK. E. ABUT.	15+07.26	-23.58	755.59	755.59

**BEAM 3**

Location	Station	Offset	Theoretical Grade Elevations	Theoretical Grade Elevations Adjusted For Dead Load Deflection
BK. W. ABUT.	13+71.52	-15.58	758.13	758.13
CL. BRG. W. ABUT.	13+74.84	-15.58	758.08	758.08
A	13+84.84	-15.58	757.94	758.02
B	13+94.84	-15.58	757.80	757.95
C	14+04.84	-15.58	757.65	757.87
D	14+14.84	-15.58	757.49	757.76
E	14+24.84	-15.58	757.33	757.64
F	14+34.84	-15.58	757.16	757.49
G	14+44.84	-15.58	756.99	757.32
H	14+54.84	-15.58	756.80	757.12
I	14+64.84	-15.58	756.62	756.89
J	14+74.84	-15.58	756.42	756.65
K	14+84.84	-15.58	756.22	756.38
L	14+94.84	-15.58	756.02	756.10
CL. BRG. E. ABUT.	15+05.59	-15.58	755.79	755.79
BK. E. ABUT.	15+08.91	-15.58	755.72	755.72



FILE NAME =	USER NAME =	DESIGNED - LRT / AG	REVISED -
		CHECKED - DAO / LRT	REVISED -
	PLOT SCALE = N.T.S.	DRAWN - TCS / AG	REVISED -
	PLOT DATE = 09/01/2011	CHECKED - AG	REVISED -

STATE OF ILLINOIS  
DEPARTMENT OF TRANSPORTATION

TOP OF SLAB ELEVATIONS SHEET 1 OF 3  
STRUCTURE NO. 049-0534

SHEET NO. OF SHEETS

FOR INFORMATION ONLY

F.A.U. RTE. 1199	SECTION 2011-056-F	COUNTY LAKE	TOTAL SHEETS 19	SHEET NO. 14
ILLINOIS FED. AID PROJECT			CONTRACT NO. 60P69	