

STATE OF ILLINOIS  
DEPARTMENT OF TRANSPORTATION  
DIVISION OF HIGHWAYS

**PROPOSED  
HIGHWAY PLANS**

F.A.I. ROUTE 90/94: I-90/94 (DAN RYAN EXPRESSWAY)  
AT ROOSEVELT RD.  
SECTION: 2011-070-1  
BRIDGE DECK SEALING & JOINT RECONSTRUCTION  
COOK COUNTY

C-91-627-11

F.A.I. R.T.E.	SECTION	COUNTY	TOTAL SHEETS	SHEET NO.
90/94	2011-070-1	COOK	27	1
ILLINOIS		CONTRACT NO. 60P89		

\* 27 + 7 - 1 = 33  
\* 33 + 2 = 35

FOR INDEX OF SHEETS, SEE SHEET NO. 2

PROJECT IS LOCATED IN THE CITY OF CHICAGO.

**TRAFFIC DATA**

I-90/94:

2009 ADT = 197,100  
POSTED SPEED LIMIT = 55 MPH

ROOSEVELT RD:

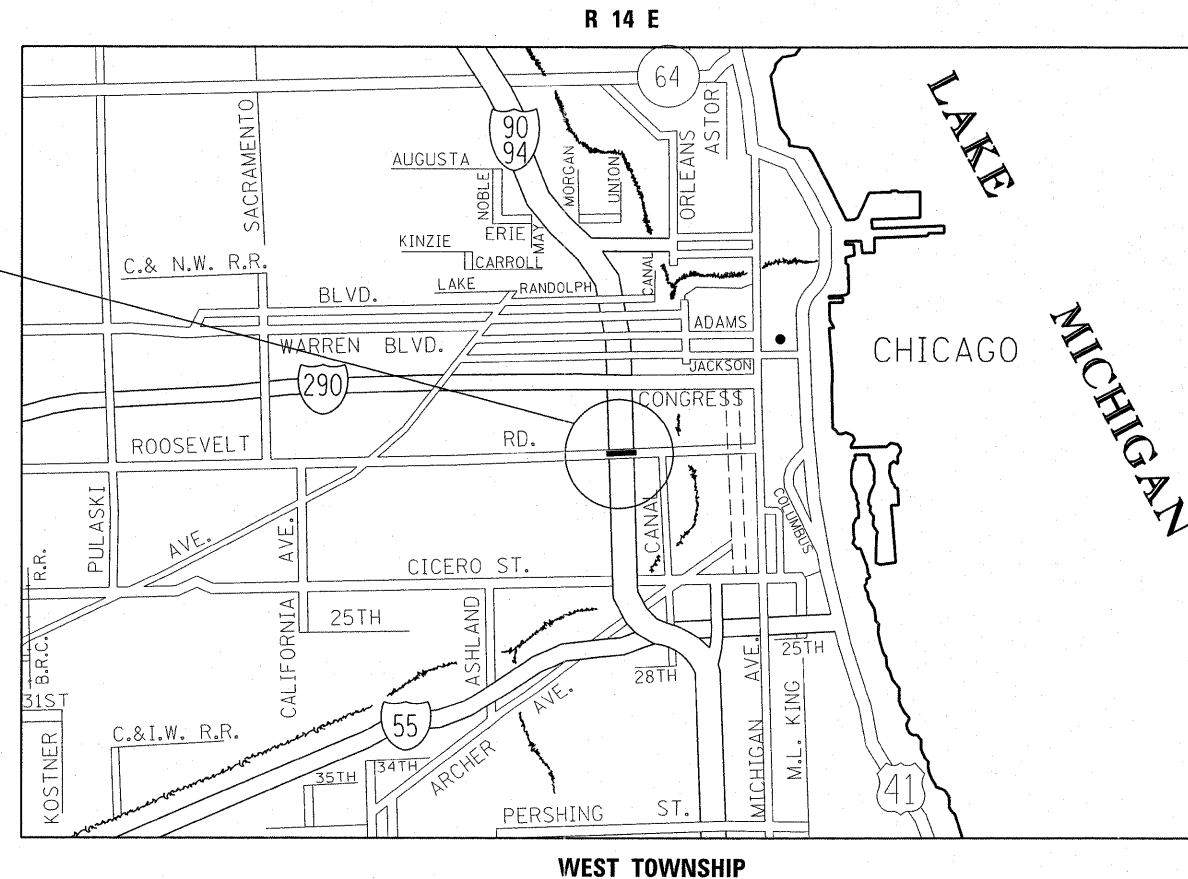
2010 ADT = 28,100  
POSTED SPEED LIMIT = 30 MPH

SN 016-0478:  
I-90/94 AT ROOSEVELT

C.U.A.N.  
CHICAGO UTILITY ALERT NETWORK  
(312) 744-7000

PROJECT ENGINEER: BOB BORO (847) 705-4237  
PROJECT MANAGER: ISSAM RAYYAN

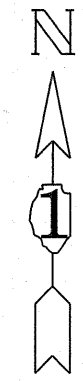
CONTRACT NO. 60P89



GROSS LENGTH = 680.00 FT. = 0.117 MILE  
NET LENGTH = 680.00 FT. = 0.117 MILE



LOCATION OF SECTION INDICATED THUS: - [black rectangle] -



STATE OF ILLINOIS  
DEPARTMENT OF TRANSPORTATION  
DIVISION OF HIGHWAYS

SUBMITTED NOVEMBER 3, 2011

Diana M. O'Keefe  
DEPUTY DIRECTOR OF HIGHWAYS, REGION ENGINEER

December 9, 2011  
Scott E. Stett P.E.  
Acting ENGINEER OF DESIGN AND ENVIRONMENT

December 9, 2011  
William R. Fry  
Interim DIRECTOR OF HIGHWAYS, CHIEF ENGINEER

**PRINTED BY THE AUTHORITY  
OF THE STATE OF ILLINOIS**

Rev. 1-17-12

**INDEX OF SHEETS**

- 1 TITLE SHEET
- 2 INDEX OF SHEETS, STATE STANDARDS, AND GENERAL NOTES
- 3 SUMMARY OF QUANTITIES
- 4 TRAFFIC STAGING
- 5-6 TRAFFIC STAGING PLAN
- 6A-6F. TEMPORARY TRAFFIC SIGNAL PAVEMENT MARKING PLAN
- 7A-7B. TRAFFIC DETOUR PLANS
- 8-12 BRIDGE REPAIR DETAILS- SN 016-0478
- 13-16 CURB RAMP PLANS
- 17 CITY OF CHICAGO P.C. CONCRETE DRIVEWAY, ALLEY RETURN AND SIDEWALK (BD-17)
- 18 CURB OR CURB AND GUTTER REMOVAL AND REPLACEMENT (BD-24)
- 19 ~~HMA TAPER AT EDGE OF P.C.C. PAVEMENT (BD-33)~~ DELETED
- 20 CITY OF CHICAGO CATCH BASIN, INELT, AND MANHOLE DETAILS (BD-47)
- 21 ENTRANCE AND EXIST RAMP CLOSURE DETAILS (TC-8)
- 22 SINGLE LANE WEAVE AND MULTI-LANE WEAVE (TC-9)
- 23 TRAFFIC CONTROL AND PROTECTION AT TURN BAYS (TO REMAIN OPEN TO TRAFFIC) (TC-14)
- 24 TRAFFIC CONTROL DETAILS FOR FREEWAY SHOULDER CLOSURES AND PARTIAL RAMP CLOSURES (TC-17)
- 25 ARTERIAL ROAD INFORMATION SIGN (TC-22)
- 26-27 CITY OF CHICAGO TYPICAL PAVEMENT MARKINGS (TC-24)

**STATE STANDARDS**

STANDARD NO.	DESCRIPTION
606001-04	CONCRETE CURB TYPE B AND COMBINATION CONCRETE CURB AND GUTTER
701400-05	APPROACH TO LANE CLOSURE, FREEWAY/EXPRESSWAY
701401-06	LANE CLOSURE, FREEWAY/EXPRESSWAY
701606-08	URBAN LANE CLOSURE, MULTILANE, 2W WITH MOUNTABLE MEDIAN
701801-05	LANE CLOSURE MULTILANE 1W OR 2W CROSSWALK OR SIDEWALK CLOSURE
701901-02	TRAFFIC CONTROL DEVICES
701411-08	
701446-03	

**GENERAL NOTES**

BEFORE STARTING ANY EXCAVATION, THE CONTRACTOR SHALL CALL "C.U.A.N." (CHICAGO UTILITY ALERT NETWORK) AT (312) 744-7000 FOR FIELD LOCATIONS OF BURIED ELECTRIC, TELEPHONE, AND GAS FACILITIES. (48 HOUR NOTIFICATION REQUIRED).

THE CONTRACTOR SHALL COORDINATE CONSTRUCTION ACTIVITIES WITH UTILITY COMPANIES AND THE CITY OF CHICAGO.

SIDEWALK HANDICAPPED RAMPS SHALL NOT BE CONSTRUCTED DIRECTLY OVER EXISTING OR PROPOSED DRAINAGE STRUCTURES.

CITY OF CHICAGO CASTINGS ARE THE PROPERTY OF THE CITY OF CHICAGO AND THE CONTRACTOR SHALL NOTIFY THE CITY FOR REMOVAL AND DISPOSITION OF THE CASTINGS.

THE CONTRACTOR WILL NOT BE ABLE TO SET UP A YARD OR FIELD OFFICE ON STATE PROPERTY WITHOUT THE WRITTEN PERMISSION OF THE DEPARTMENT.

BEFORE BEGINNING ANY WORK, THE CONTRACTOR SHALL RETAIN AND RECORD FOR FUTURE REFERENCE, ALL EXISTING PAVEMENT MARKING LINES (RAISED REFLECTIVE PAVEMENT MARKERS) IN ORDER THAT THESE LOCATIONS CAN BE RE-ESTABLISHED FOR STRIPING, EXACT LOCATIONS OF ALL PAVEMENT MARKINGS SHALL BE AS DIRECTED BY THE ENGINEER.

ALL DAMAGE TO EXISTING PAVEMENT MARKINGS OR RAISED REFLECTIVE PAVEMENT MARKERS OUTSIDE THE REMOVAL LINE SHOWN ON THE PLANS SHALL BE REPLACED AT NO ADDITIONAL COST TO THE DEPARTMENT.

THE CONTRACTOR SHALL CONTACT THE DISTRICT ONE TRAFFIC CONTROL SUPERVISOR AT (847) 705-4470 FOR ARTERIALS AND (847) 705-4151 FOR EXPRESSWAYS A MINIMUM OF 72 HOURS IN ADVANCE OF BEGINNING WORK.

THE CONTRACTOR SHALL BE REQUIRED TO PROVIDE ACCESS TO ABUTTING PROPERTY AT ALL TIMES DURING THE CONSTRUCTION OF THIS PROJECT.

THE ENGINEER SHALL CONTACT PATRICE HARRIS, AREA TRAFFIC FIELD ENGINEER, AT (708) 597-9800 A MINIMUM OF TWO (2) WEEKS PRIOR TO THE PLACEMENT OF PERMANENT PAVEMENT MARKINGS.

DO NOT SCALE PLANS FOR CONSTRUCTION DIMENSIONS.

THESE PLANS HAVE BEEN PREPARED FROM NOTES RECEIVED FROM THE BUREAU OF MAINTENANCE BRIDGE INSPECTORS.

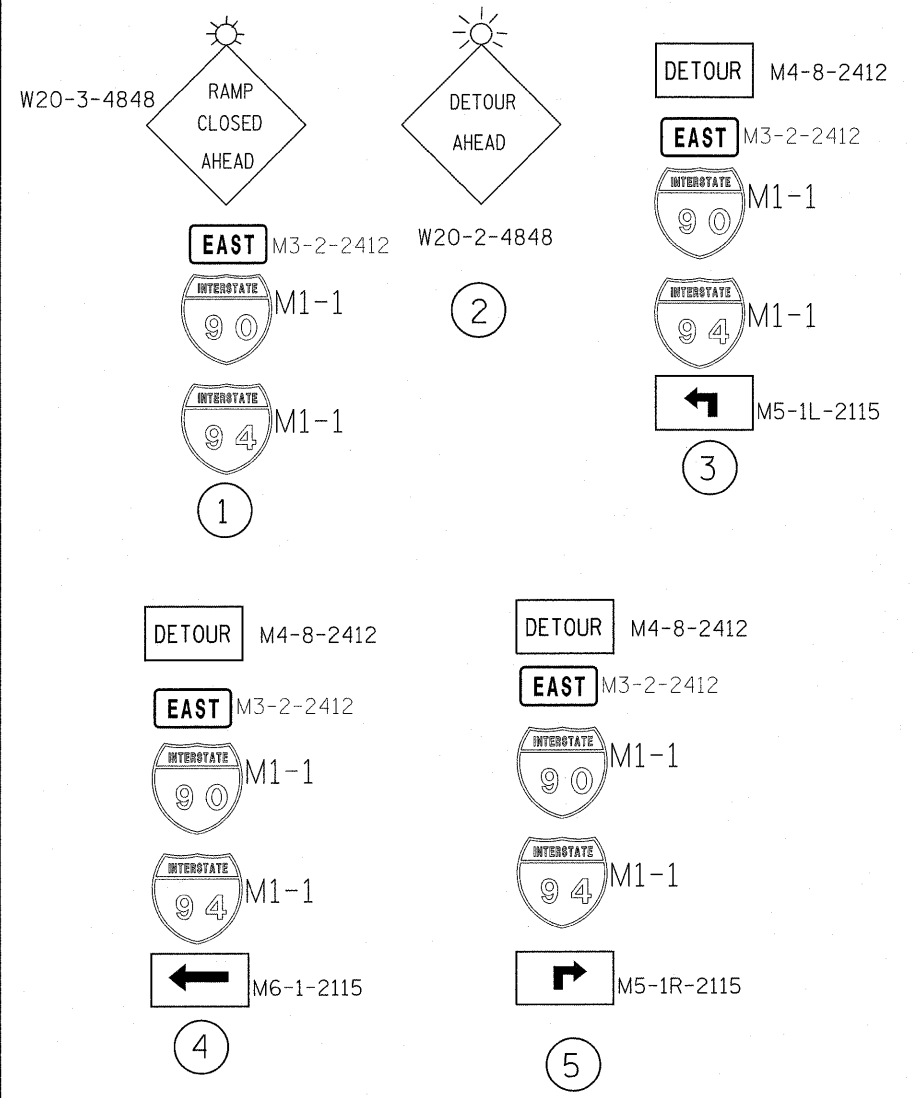
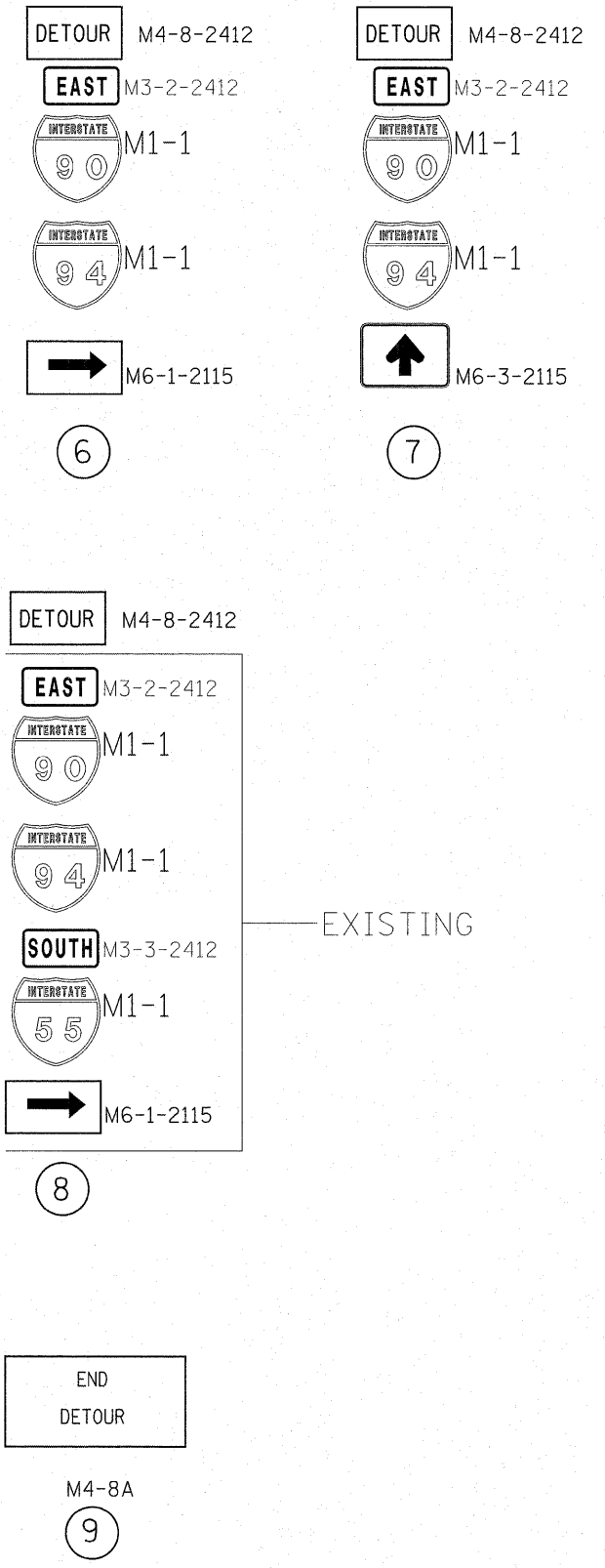
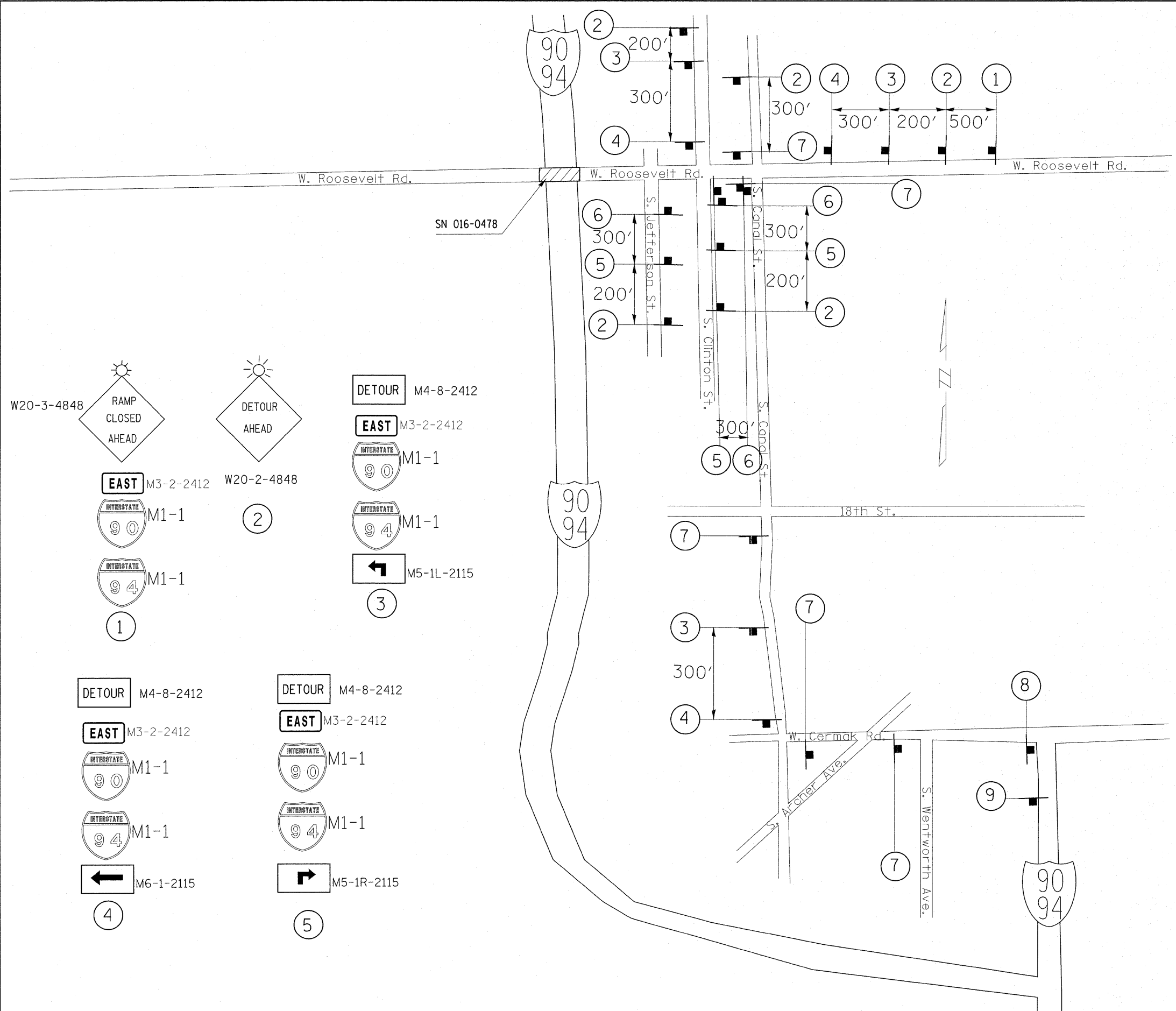
EXISTING PAVEMENT MARKINGS SHALL BE TEMPORARILY COVERED PRIOR TO THE APPLICATION OF THE DECK SURFACE TREATMENT, TO PREVENT THE MATERIAL FROM BEING APPLIED TO THE MARKINGS, THE TEMPORARY COVERING SHALL BE REMOVED AFTER APPLICATIONS OF THE DECK SURFACE TREATMENT AND PRIOR TO OPENING TO TRAFFIC. COST IS INCLUDED WITH THE DECK SURFACE TREATMENT SPECIFIED.

PLAN DIMENSIONS AND DETAIL RELATIVE TO EXISTING PLANS ARE SUBJECT TO NOMINAL CONSTRUCTION VARIATIONS. THE CONTRACTOR SHALL FIELD VERIFY EXISTING DIMENSIONS AND DETAILS AFFECTING NEW CONSTRUCTION AND MAKE NECESSARY APPROVED ADJUSTMENTS PRIOR TO CONSTRUCTION OR ORDERING OF MATERIALS, SUCH VARIATIONS SHALL NOT BE BECAUSE FOR ADDITIONAL COMPENSATION FOR A CHANGE IN SCOPE OF THE WORK, HOWEVER, THE CONTRACTOR WILL BE PAID FOR THE QUANTITY ACTUALLY FURNISHED BASED AT THE UNITE PRICE BID FOR THE WORK.

CONCRETE SUPERSTRUCTURE SHALL HAVE A SEVEN DAY MINIMUM CURE.

THE "ARTERIAL ROAD INFORMATION SIGN (TC-22)" IS APPLICABLE ONLY TO ARTERIAL ROADS AND SHALL NOT BE APPLIED TO EXPRESSWAYS/TOLLWAYS.

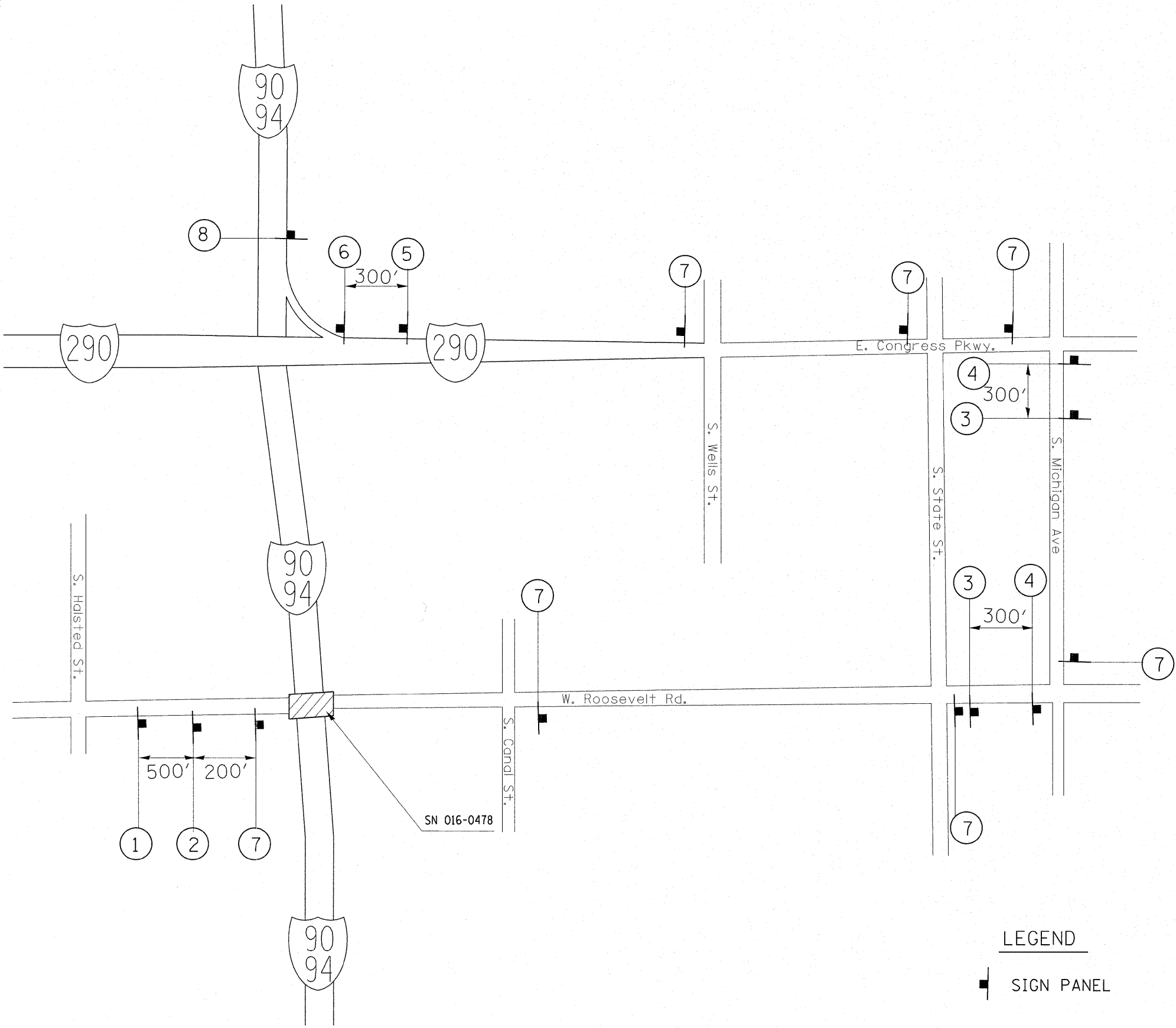
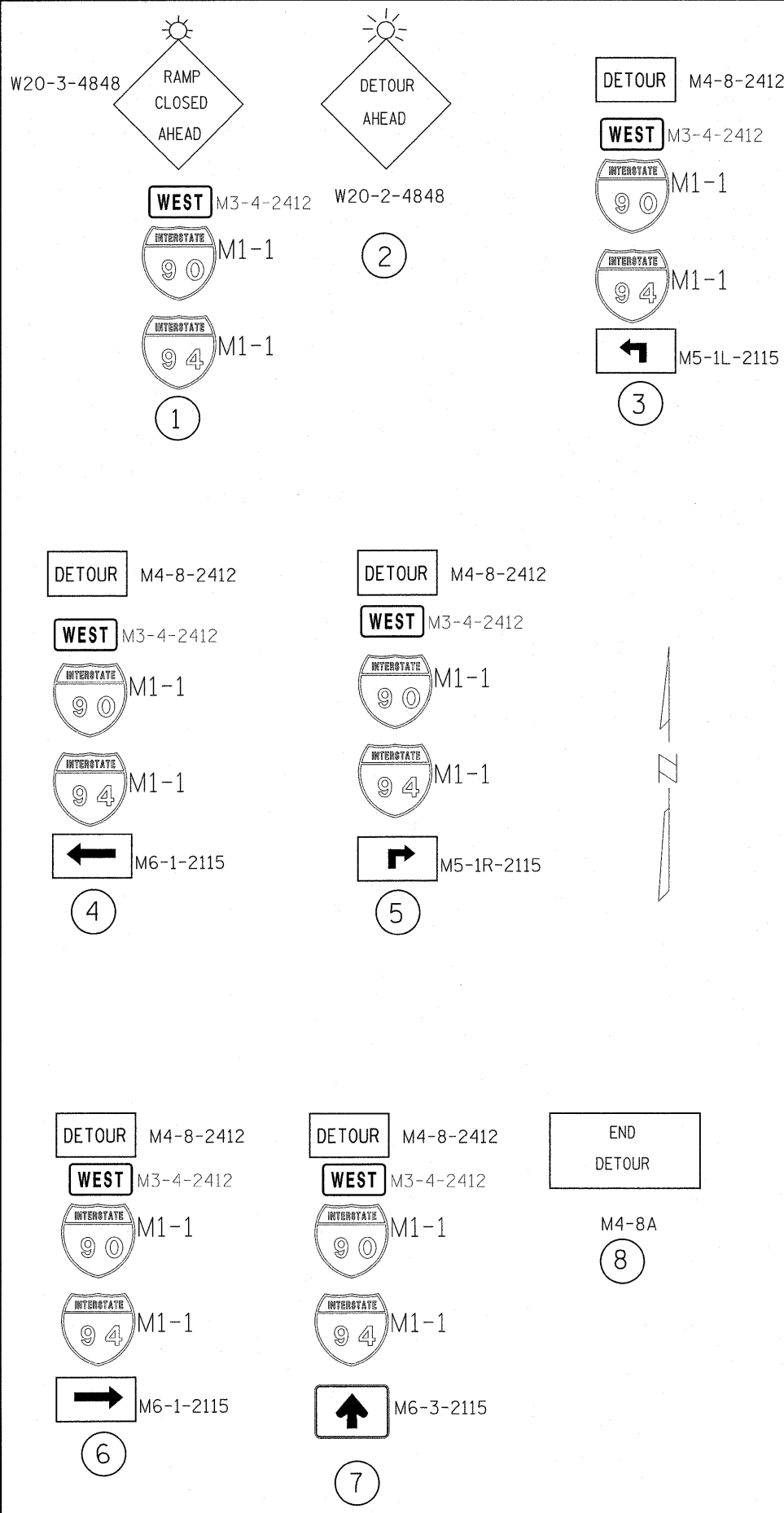
FILE NAME =	USER NAME = potelar	DESIGNED -	REVISED -	<b>STATE OF ILLINOIS DEPARTMENT OF TRANSPORTATION</b>	<b>I- 90/94 (DAN RYAN EXPWY) INDEX OF SHEETS AND STATE STANDARDS</b>	F.A.I. RTE.	SECTION	COUNTY	TOTAL SHEETS	SHEET NO.	
e:\pwork\pwork\potelar\d0281223\01627	1-sh-t-plan.dgn	DRAWN -	REVISED -			90/94	2011-070-1	COOK	27	2	
	PLOT SCALE = 50,0000 ' / in.	CHECKED -	REVISED -			CONTRACT NO. 60P89					
	PLOT DATE = 11/4/2011	DATE -	REVISED -			ILLINOIS FED. AID PROJECT					



LEGEND  
SIGN PANEL

ADDED SHEET 1/10/2012 ARP

FILE NAME =	USER NAME = gorengoutab	DESIGNED -	REVISED -	<b>STATE OF ILLINOIS DEPARTMENT OF TRANSPORTATION</b>	<b>I-90/94 (DAN RYAN EXPRESSWAY) AT ROOSEVELT ROAD STAGE I DETOUR WB ROOSEVELT AVE TO I-90/94 EB S.N. 016-0478</b>			F.A.I. RTE. 90/94	SECTION 2011-070-I	COUNTY COOK	TOTAL SHEETS 27	SHEET NO. 7A	
ct:\pw\work\p\dot\gorengoutab\0281223\0162711-sht-plan.dgn	PLOT SCALE = 50,0000' / in.	DRAWN -	REVISED -					SCALE: SHEET NO. OF SHEETS STA. TO STA.			CONTRACT NO. 60P89		
	PLOT DATE = 1/12/2012	CHECKED -	REVISED -								ILLINOIS FED. AID PROJECT		
		DATE -	REVISED -										



**LEGEND**  
 ■ SIGN PANEL

▲ ADDED SHEET 1/10/2012 ARP

FILE NAME =	USER NAME = gorengautab	DESIGNED -	REVISED -	<b>STATE OF ILLINOIS DEPARTMENT OF TRANSPORTATION</b>	<b>I-90/94 (DAN RYAN EXPRESSWAY) AT ROOSEVELT ROAD STAGE 2 DETOUR EB ROOSEVELT AVE TO WB I-90/94 S.N. 016-0478</b>	F.A.I. RTE.	SECTION	COUNTY	TOTAL SHEETS	SHEET NO.
c:\pwork\pwork\gorengautab\d0281223\0162711-sht-plan.dgn		DRAWN -	REVISED -			90/94	2011-070-1	COOK	27	7B
PLOT SCALE = 50,0000' / in.		CHECKED -	REVISED -			CONTRACT NO. 60P89				
PLOT DATE = 1/12/2012		DATE -	REVISED -			ILLINOIS FED. AID PROJECT				