

F.A.P. RTE.	SECTION	COUNTY	TOTAL SHEETS	SHEET NO.
870	534-RS-5	DUPAGE	19	1
		ILLINOIS	CONTRACT NO. 60P91	

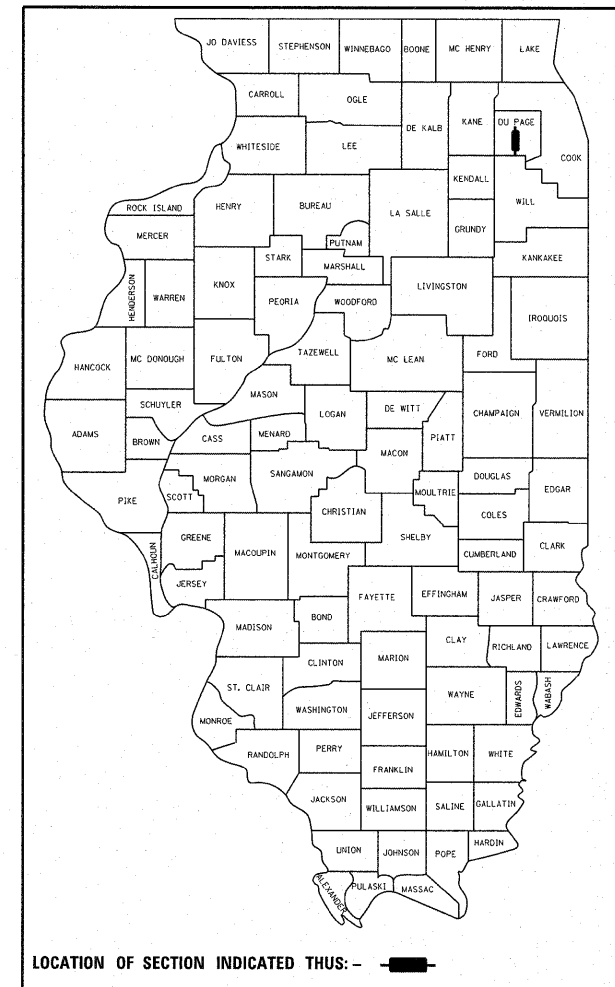
△ * 19 * 5 = 24

STATE OF ILLINOIS
DEPARTMENT OF TRANSPORTATION
DIVISION OF HIGHWAYS

**PROPOSED
HIGHWAY PLANS**

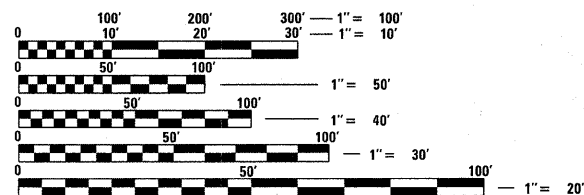
FAP ROUTE 870: ILL 53
75TH STREET TO WILL COUNTY LINE
SECTION 534-RS-5
RESURFACING (3P)
PROJECT: F-0870(013)
DUPAGE COUNTY
C-91-629-11

D-91-629-11



FOR INDEX OF SHEETS, SEE SHEET NO. 2

PROJECT IS LOCATED IN THE VILLAGE OF
WOODRIDGE.

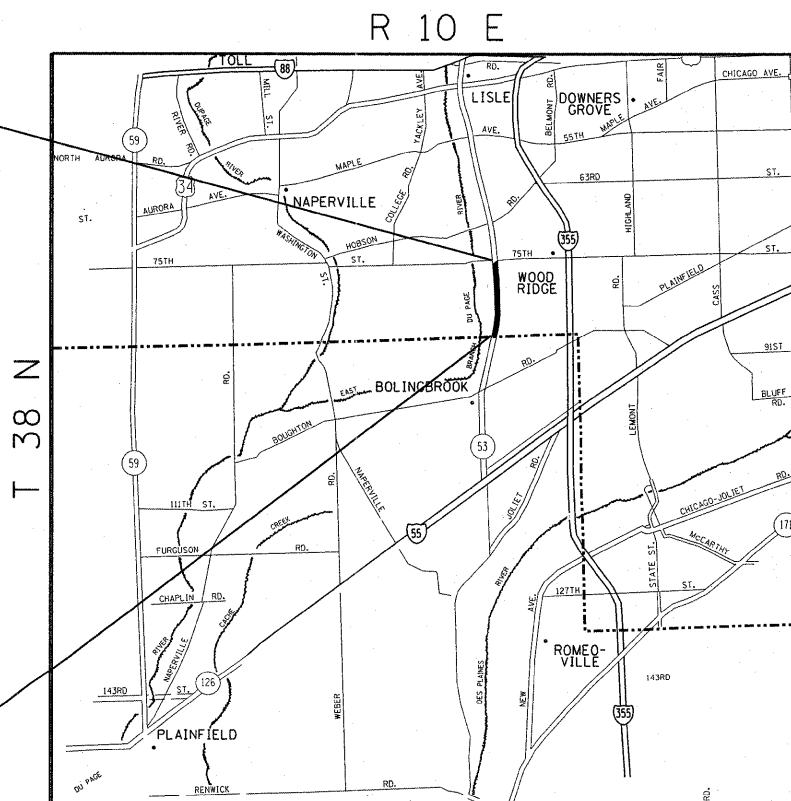


FULL SIZE PLANS HAVE BEEN PREPARED USING STANDARD ENGINEERING SCALES. REDUCED SIZED PLANS WILL NOT CONFORM TO STANDARD SCALES. IN MAKING MEASUREMENTS ON REDUCED PLANS, THE ABOVE SCALES MAY BE USED.

J.U.L.I.E.
JOINT UTILITY LOCATION INFORMATION FOR EXCAVATION
1-800-892-0123
OR 811

PROJECT ENDS:
STATION 79 + 86

PROJECT BEGINS:
STATION 3 + 77



LISLE TOWNSHIP



TRAFFIC DATA

2009 ADT = 25,400
POSTED SPEED LIMIT = 45 MPH

GROSS AND NET LENGTH OF PROJECT = 7,609 FT. = 1.44 MILES

PROJECT ENGINEER DAN WILGREEN (847) 705-4240
PROJECT MANAGER KEN ENG (847) 705-4247

CONTRACT NO. 60P91

STATE OF ILLINOIS
DEPARTMENT OF TRANSPORTATION
DIVISION OF HIGHWAYS

SUBMITTED OCTOBER 21 20 11

Diana M. O'Keefe
DEPUTY DIRECTOR OF HIGHWAYS, REGION ENGINEER

December 9 20 11
Scott E. Still, P.E.
acting ENGINEER OF DESIGN AND ENVIRONMENT

December 9 20 11
William R. Frey
Interim DIRECTOR OF HIGHWAYS, CHIEF ENGINEER

Rev. 1-5-12
**PRINTED BY THE AUTHORITY
OF THE STATE OF ILLINOIS**