

INTERSTATE ROUTE SHIELD
 CONVENTIONAL ROAD SIGN SIZE (24x24)
 EXPRESSWAY SIGN SIZE (36x36)



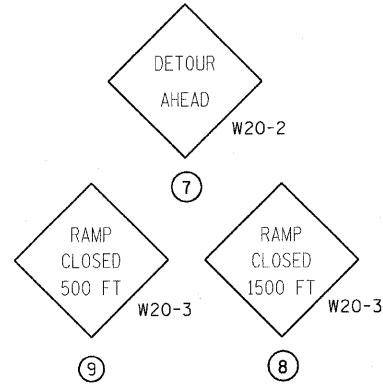
⑤ M1-4

INTERSTATE ROUTE SHIELD
 CONVENTIONAL ROAD SIGN SIZE (30x24)
 EXPRESSWAY SIGN SIZE (45x36)



⑥ M1-5

WARNING SIGNS
 CONVENTIONAL ROAD SIGN SIZE (36x36)
 EXPRESSWAY SIGN SIZE (48x48)



DETOUR SIGN
 CONVENTIONAL ROAD SIGN SIZE (24x12)
 EXPRESSWAY SIGN SIZE (30x15)



① M4-8

END DETOUR SIGN
 CONVENTIONAL ROAD SIGN SIZE (24x18)
 EXPRESSWAY SIGN SIZE (24x18)



①① M4-8a

CARDINAL DIRECTION SIGNS
 CONVENTIONAL ROAD SIGN SIZE (21x15)
 EXPRESSWAY SIGN SIZE (30x21)

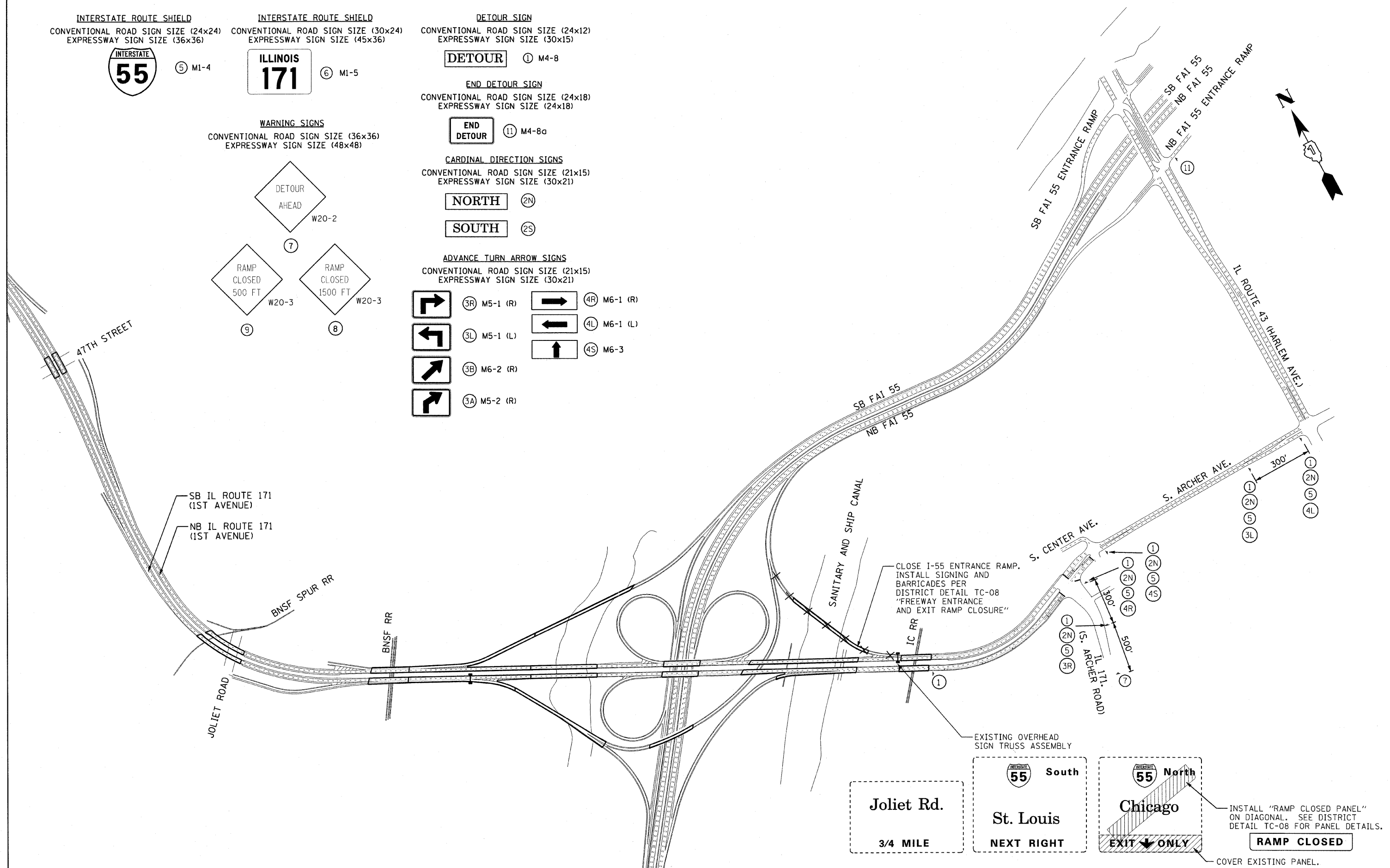
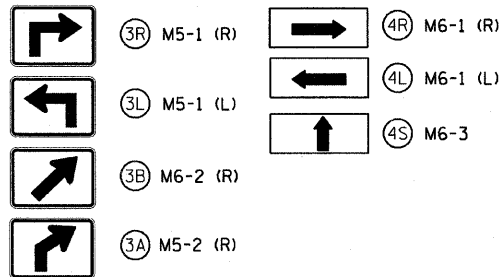


②N



②S

ADVANCE TURN ARROW SIGNS
 CONVENTIONAL ROAD SIGN SIZE (21x15)
 EXPRESSWAY SIGN SIZE (30x21)



Joliet Rd.

3/4 MILE

South

St. Louis

NEXT RIGHT

North

Chicago

EXIT ONLY

INSTALL "RAMP CLOSED" ON DIAGONAL. SEE DISTRICT DETAIL TC-08 FOR PANEL DETAILS.

RAMP CLOSED

COVER EXISTING PANEL.

FILE NAME =	USER NAME = rgal1	DESIGNED - EM	REVISED -	STATE OF ILLINOIS DEPARTMENT OF TRANSPORTATION	IL ROUTE 171 MAINTENANCE OF TRAFFIC - SUBSTAGE IC TEMPORARY DETOUR PLAN	F.A.P. RTE. 373	SECTION 2011-077-BR	COUNTY COOK	TOTAL SHEETS 32	SHEET NO. 13B	
PLOT SCALE = 350.0000' / IN.	CHECKED - JMH	REVISOR -	REVISOR -		SCALE:	SHEET NO. OF SHEETS STA. TO STA.	ILLINOIS FED. AID PROJECT CONTRACT NO. 60R03				
PLOT DATE = 12/16/2011	DATE - AUGUST, 2011	REVISOR -	REVISOR -								