

ROUTE MARKERS

FOR U.S. ROUTES
M1-40-2424

FOR ILLINOIS ROUTES
M1-50-2424

R.R. UNMARKED ROUTES
SPECIAL 24" x 18" VARIABLE
4" BLACK LETTERS ON WHITE
REFLECTIVE BACKGROUND

ARROWS SIGNS

M5-1L-2115

M5-1R-2115

M6-1L-2115

M6-1R-2115

M6-3-2115

CARDINAL DIRECTION & DETOUR SIGNS

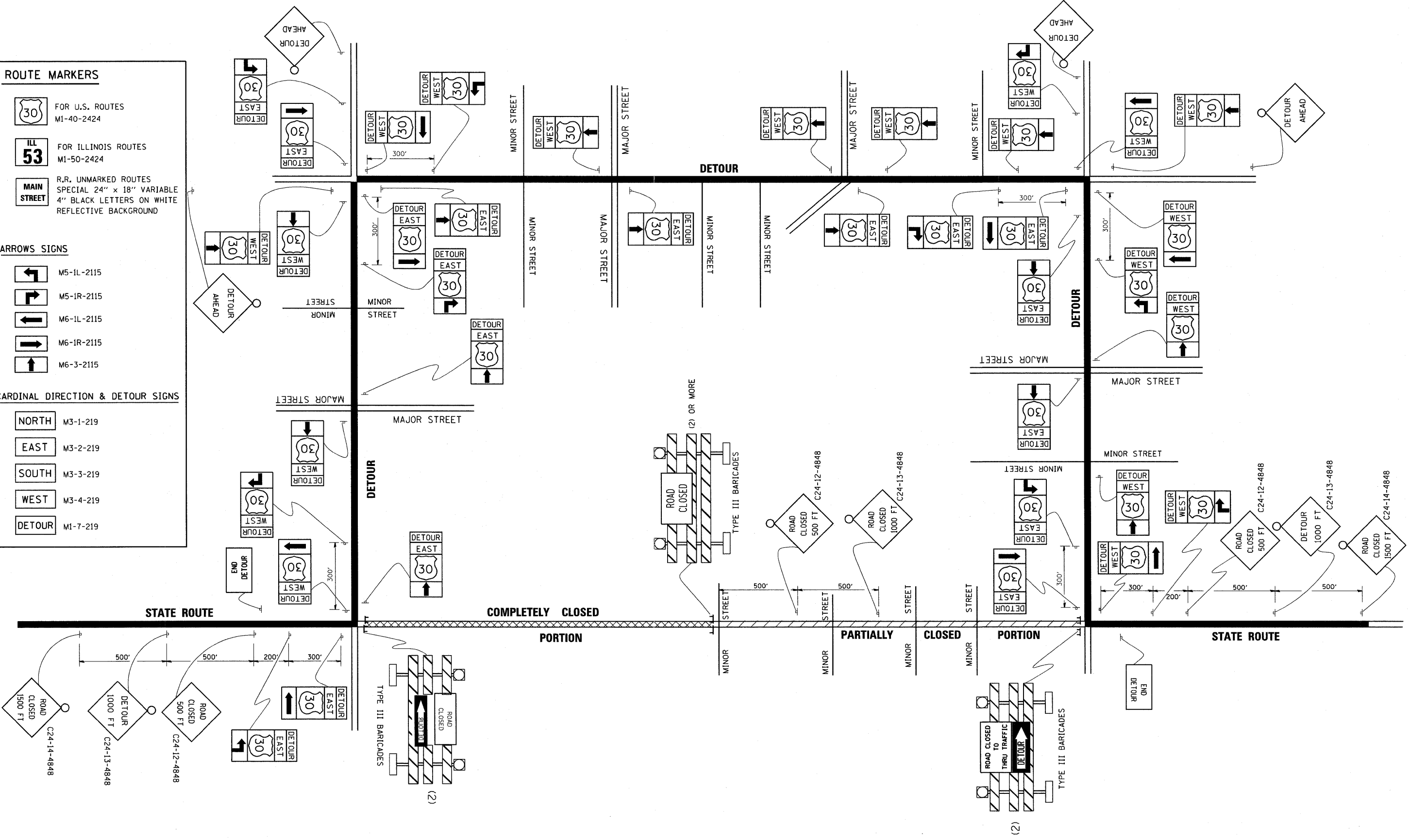
NORTH M3-1-219

EAST M3-2-219

SOUTH M3-3-219

WEST M3-4-219

DETOUR M1-7-219



FILE NAME =
W:\diststd\22x34\to21.dgn

USER NAME = gaglianobt

PLOT SCALE = 50.0000" / IN.

PLOT DATE = 1/4/2008

DESIGNED -

DRAWN -

CHECKED -

DATE -

REVISED - 10-18-02

REVISED -

REVISED -

REVISED -

**STATE OF ILLINOIS
DEPARTMENT OF TRANSPORTATION**

**TYPICAL MARKING
FOR CLOSING STATE HIGHWAYS**

SCALE: NONE

SHEET NO. 1 OF 1 SHEETS

STA. TO STA.

F.A. RTE. NO.	SECTION	COUNTY	TOTAL SHEETS	SHEET NO.
373	2011-077-BR	COOK	32	31
TC-21			CONTRACT NO. 60R03	
FED. ROAD DIST. NO. 1 ILLINOIS FED. AID PROJECT				