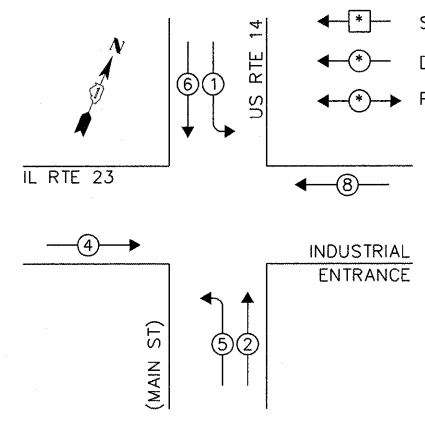
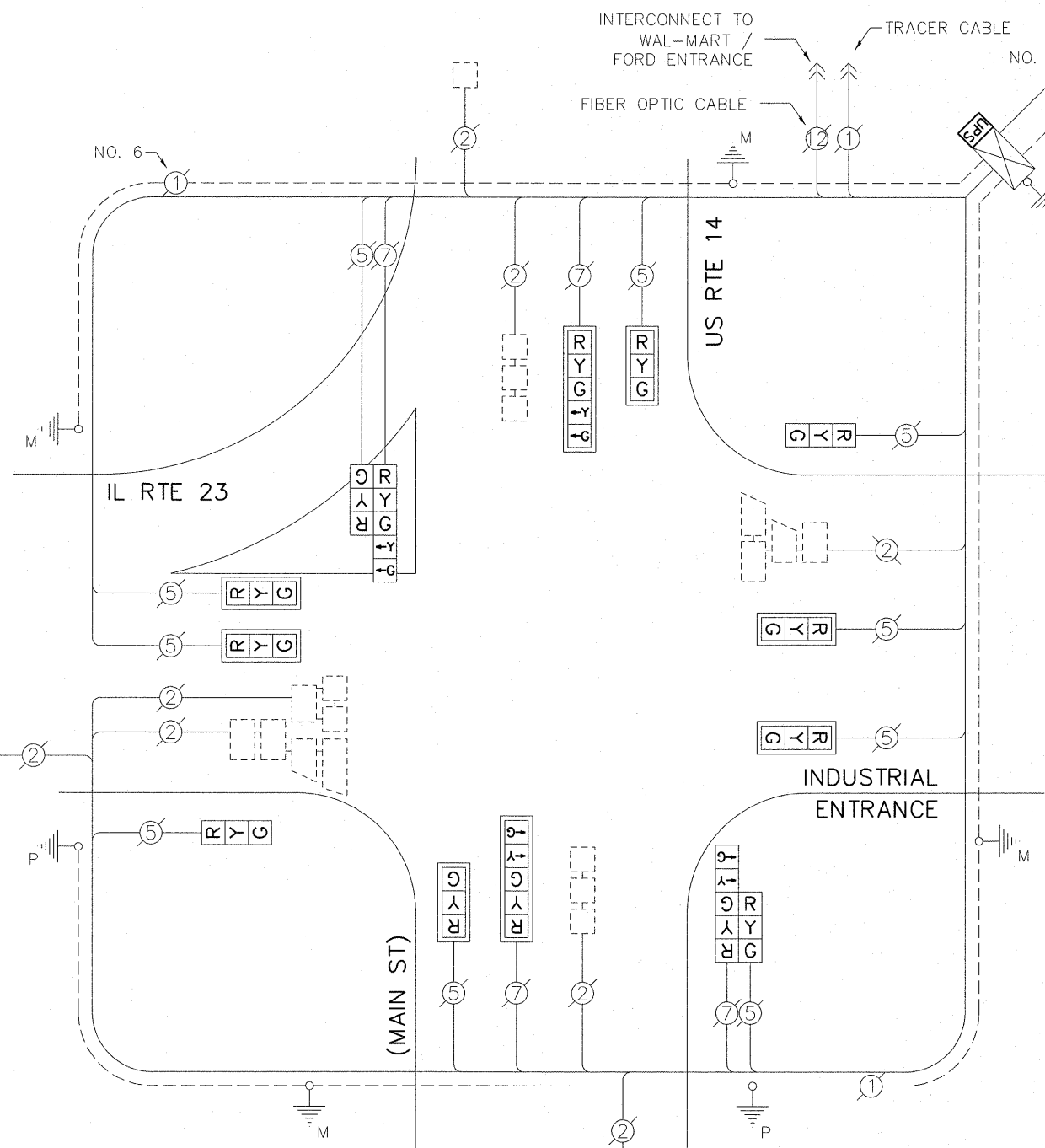


CONTROLLER SEQUENCE

- LEGEND:**
- ◻ SINGLE ENTRY PHASE
 - ◻ DUAL ENTRY PHASE
 - ◻ PEDESTRIAN PHASE



PHASE DESIGNATION DIAGRAM



CABLE PLAN

RETROFIT ALL EXISTING TRAFFIC SIGNAL HEADS TO L.E.D.

UPS SHALL BE INSTALLED ON LEFT SIDE OF CONTROLLER CABINET DUE TO PHYSICAL CONSTRAINTS, OR AS DIRECTED BY THE ENGINEER.

I.D.O.T. TRAFFIC SIGNAL INSTALLATION ELECTRICAL SERVICE REQUIREMENTS					TOTAL WATTAGE
TYPE	NO. OF LAMPS	WATTAGE		% OPERATION	
SIGNAL (RED)	14	INCAND.	LED	0.50	119.00
(YELLOW)	14		25	0.25	87.50
(GREEN)	14		15	0.25	52.50
ARROW	8		12	0.10	9.60
PED. SIGNAL	-		25	1.00	-
CONTROLLER	1		100	1.00	100.00
ILLUM. SIGN	-		25	0.05	-
VIDEO SYSTEM	-		-	1.00	-
FLASHER				0.50	
ENERGY COSTS TO:				TOTAL =	368.60

CITY OF HARVARD
 201 WEST DIGGINS STREET
 HARVARD, IL 60033
 ENERGY SUPPLY: CONTACT: MIKE LENOX
 PHONE: (815) 490-2869
 COMPANY: COMMONWEALTH EDISON

SCHEDULE OF QUANTITIES		UNIT	QUANTITY
ITEM			
MAINTENANCE OF EXISTING TRAFFIC SIGNAL INSTALLATION	EACH	1	
MODIFY EXISTING CONTROLLER CABINET	EACH	1	
SIGNAL HEAD, LED, 2-FACE, 1-3 SECTION, 1-5 SECTION, BM, RETROFIT	EACH	2	
SIGNAL HEAD, LED, 1-FACE, 3-SECTION, BM, RETROFIT	EACH	2	
SIGNAL HEAD, LED, 1-FACE, 3-SECTION, MAM, RETROFIT	EACH	6	
SIGNAL HEAD, LED, 1-FACE, 5-SECTION, MAM, RETROFIT	EACH	2	
UNINTERRUPTIBLE POWER SUPPLY SPECIAL	EACH	1	

FILE NAME =	USER NAME = plascencia	DESIGNED - IP	REVISED -
#FILEABBREV#		DRAWN - IP	REVISED -
	PLOT SCALE = 20.0000' / 1"	CHECKED - AW	REVISED -
	PLOT DATE = 10/27/2011	DATE - 10/25/2011	REVISED -

STATE OF ILLINOIS
 DEPARTMENT OF TRANSPORTATION

SCHEDULE OF QUANTITIES, CABLE PLAN, PHASE DESIGNATION DIAGRAM AND EMERGENCY VEHICLE PREEMPTION SEQUENCE
 US RTE 14 AND IL RTE 23 / INDUSTRIAL ENTRANCE
 SCALE: 1" = SHEET NO. OF SHEETS STA. TO STA.

F.A.U. RTE.	SECTION	COUNTY	TOTAL SHEETS	SHEET NO.
-	2011-208-TS	McHENRY	57	14
CONTRACT NO. 60R37			ILLINOIS	