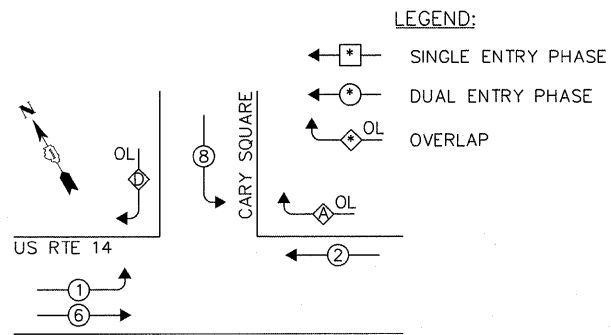
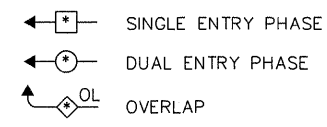


CONTROLLER SEQUENCE



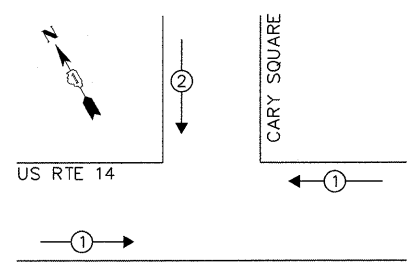
LEGEND:



PHASE DESIGNATION DIAGRAM

OVERLAP LETTER	PERMISSIVE PHASE	PROTECTED PHASE
A =	2 +	8
D =	8 +	1

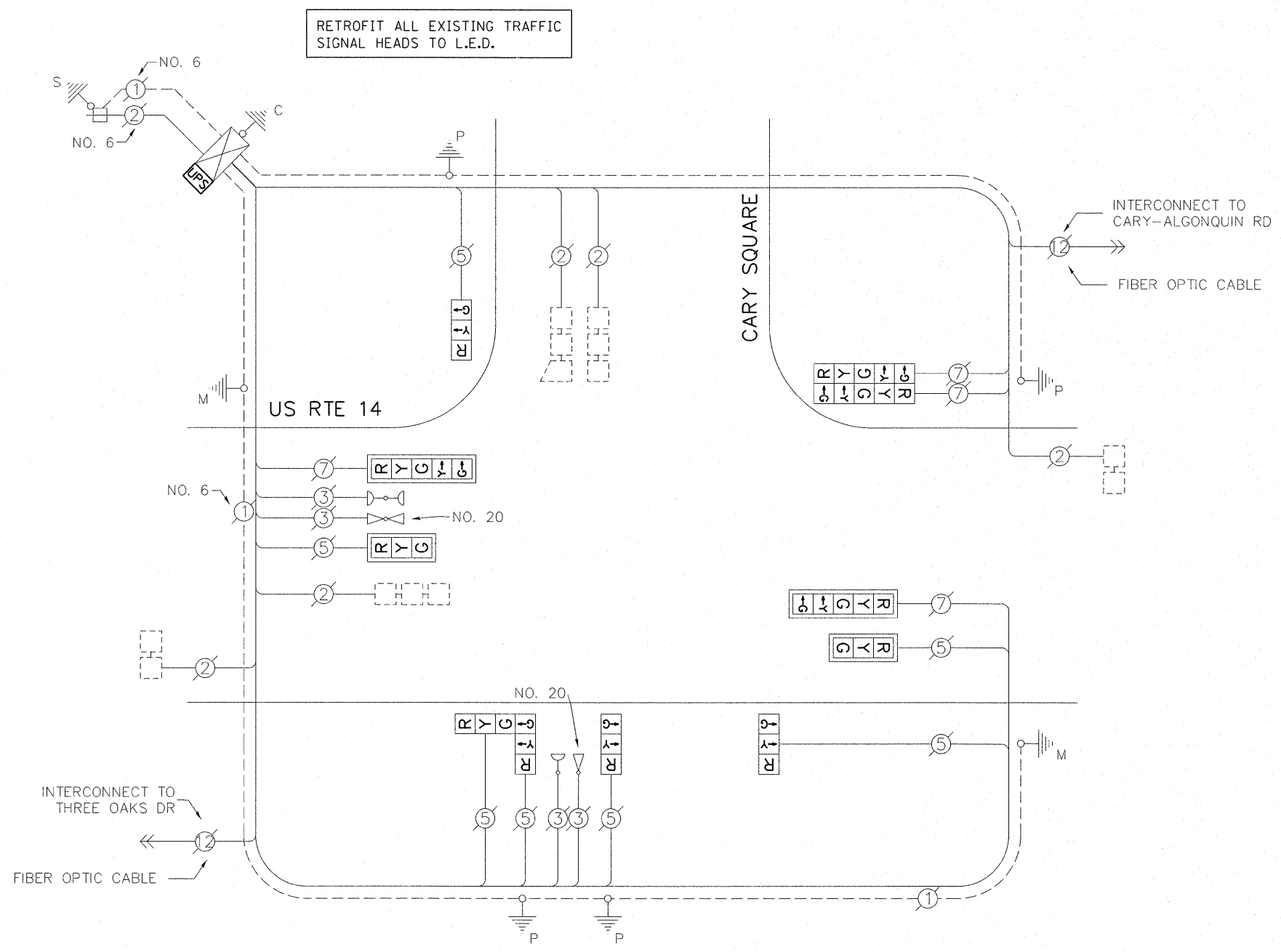
EMERGENCY VEHICLE PREEMPTION SEQUENCE



EXISTING EMERGENCY VEHICLE PREEMPTORS		
EMERGENCY VEHICLE PREEMPTOR	1	2
MOVEMENT	←	↓

I.D.O.T. TRAFFIC SIGNAL INSTALLATION ELECTRICAL SERVICE REQUIREMENTS					TOTAL WATTAGE
TYPE	NO. OF LAMPS	WATTAGE		% OPERATION	
SIGNAL (RED)	11	INCAND.	LED	0.50	93.50
(YELLOW)	11		25	0.25	68.75
(GREEN)	11		15	0.25	41.25
ARROW	8		12	0.10	9.60
PED. SIGNAL	-		25	1.00	-
CONTROLLER	1		100	1.00	100.00
ILLUM. SIGN	-		25	0.05	-
VIDEO SYSTEM	-		-	1.00	-
FLASHER				0.50	
ENERGY COSTS TO:				TOTAL =	313.10

VILLAGE OF CARY
 655 VILLAGE HALL DRIVE
 CARY, IL 60013
 ENERGY SUPPLY: CONTACT: MIKE LENOX
 PHONE: (815) 490-2869
 COMPANY: COMMONWEALTH EDISON



CABLE PLAN

SCHEDULE OF QUANTITIES

ITEM	UNIT	QUANTITY
MAINTENANCE OF EXISTING TRAFFIC SIGNAL INSTALLATION	EACH	1
MODIFY EXISTING CONTROLLER CABINET	EACH	1
SIGNAL HEAD, LED, 1-FACE, 3-SECTION, BM, RETROFIT	EACH	3
SIGNAL HEAD, LED, 1-FACE, 3-SECTION, MAM, RETROFIT	EACH	2
SIGNAL HEAD, LED, 1-FACE, 5-SECTION, MAM, RETROFIT	EACH	2
SIGNAL HEAD, LED, 2-FACE, 3-SECTION, BM, RETROFIT	EACH	1
SIGNAL HEAD, LED, 2-FACE, 5-SECTION, BM, RETROFIT	EACH	1
UNINTERRUPTIBLE POWER SUPPLY SPECIAL	EACH	1

FILE NAME =	USER NAME = pascencia	DESIGNED - IP	REVISED -
#FILEABBREV#		DRAWN - IP	REVISED -
	PLOT SCALE = 20.0000' / 1"	CHECKED - AW	REVISED -
	PLOT DATE = 10/27/2011	DATE - 10/25/2011	REVISED -

STATE OF ILLINOIS
 DEPARTMENT OF TRANSPORTATION

SCHEDULE OF QUANTITIES, CABLE PLAN, PHASE DESIGNATION DIAGRAM AND EMERGENCY VEHICLE PREEMPTION SEQUENCE			
US RTE 14 AND CARY SQUARE			
SCALE: 1" =	SHEET NO. OF	SHEETS STA.	TO STA.

F.A.U. RTE.	SECTION	COUNTY	TOTAL SHEETS	SHEET NO.
-	2011-208-TS	McHENRY	57	18
				CONTRACT NO. 60R37
ILLINOIS				