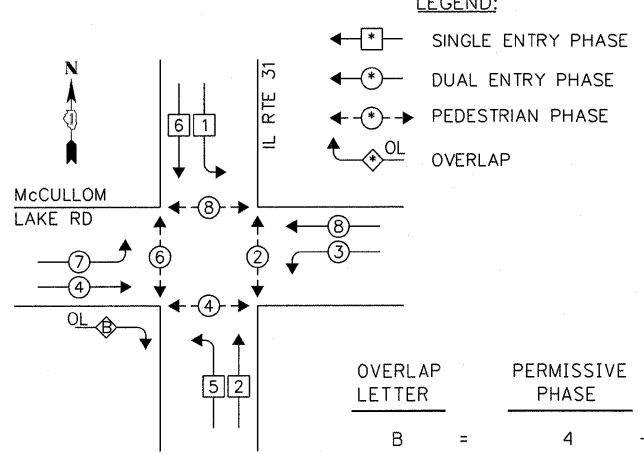
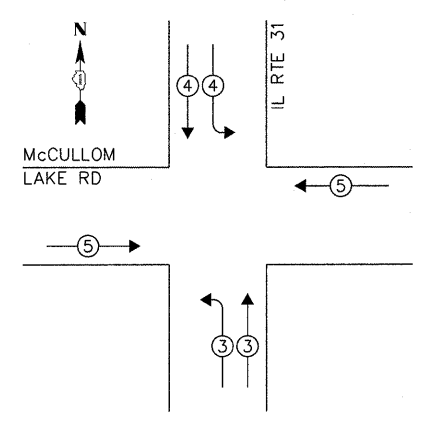


CONTROLLER SEQUENCE



PHASE DESIGNATION DIAGRAM

EMERGENCY VEHICLE PREEMPTION SEQUENCE



EXISTING EMERGENCY VEHICLE PREEMPTORS			
EMERGENCY VEHICLE PREEMPTOR	3	4	5
MOVEMENT	↗	↖	↔

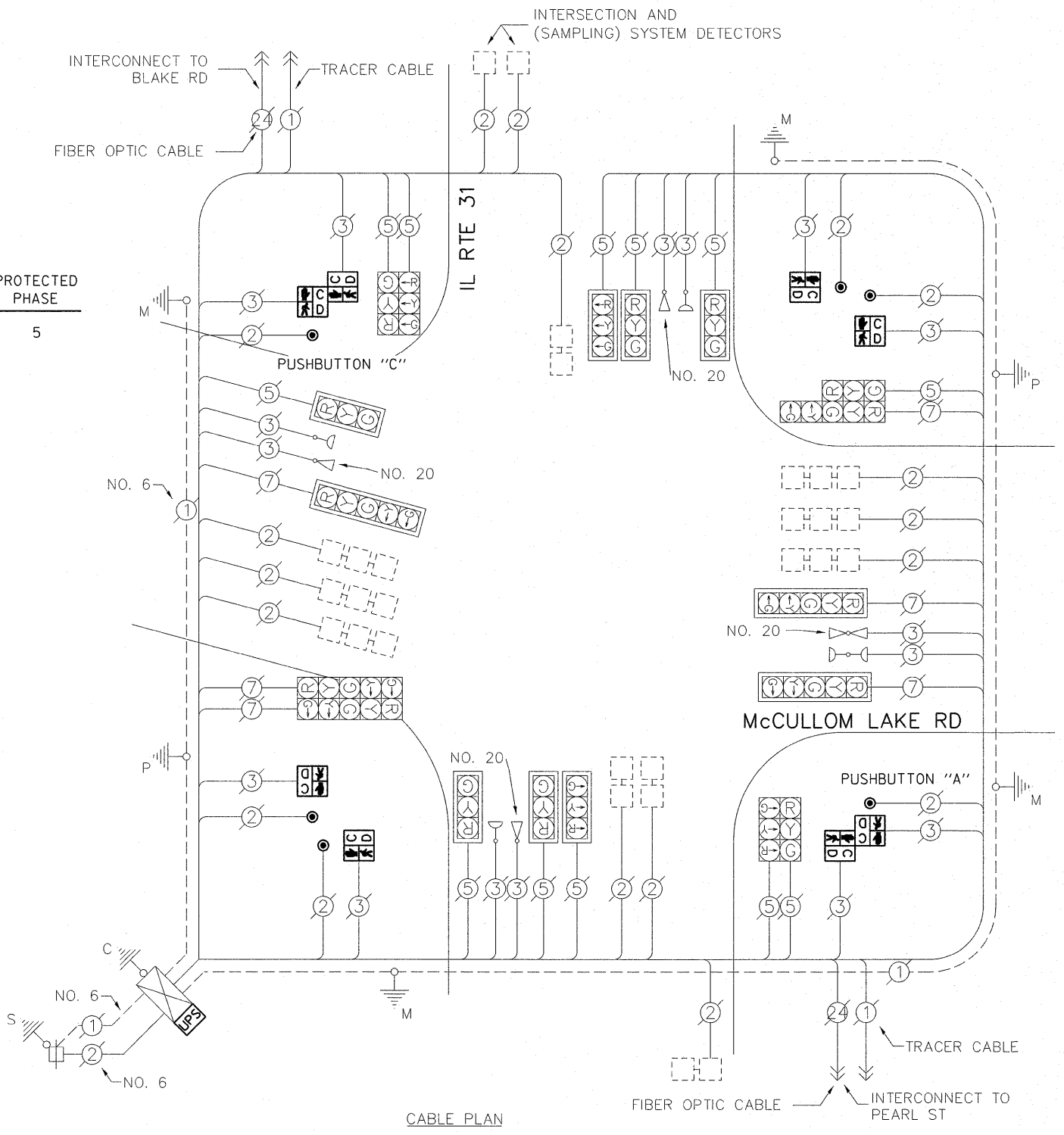
I.D.O.T. TRAFFIC SIGNAL INSTALLATION ELECTRICAL SERVICE REQUIREMENTS					TOTAL WATTAGE
TYPE	NO. OF LAMPS	WATTAGE		% OPERATION	
SIGNAL (RED)	18	INCAND.	LED	0.50	153.00
(YELLOW)	18		25	0.25	112.50
(GREEN)	18		15	0.25	67.50
ARROW	12		12	0.10	14.40
PED. SIGNAL	8		25	1.00	200.00
CONTROLLER	1		100	1.00	100.00
ILLUM. SIGN	-		25	0.05	-
VIDEO SYSTEM	-		-	1.00	-
FLASHER				0.50	
ENERGY COSTS TO:				TOTAL =	647.40

CITY OF McHENRY
 333 SOUTH GREEN STREET
 McHENRY, IL 60050
 ENERGY SUPPLY: CONTACT: MIKE LENOX
 PHONE: (815) 490-2869
 COMPANY: COMMONWEALTH EDISON

LEGEND:

- ◀+ SINGLE ENTRY PHASE
- ◀* DUAL ENTRY PHASE
- ◀+ PEDESTRIAN PHASE
- ◀OL OVERLAP

OVERLAP LETTER
 B = PERMISSIVE PHASE 4 + PROTECTED PHASE 5



CABLE PLAN

NOTE:

PUSHBUTTON "A" SHALL PLACE A CALL IN PHASES 2 AND 4
 PUSHBUTTON "C" SHALL PLACE A CALL IN PHASES 6 AND 8

THE FOLLOWING ITEMS SHALL BE REMOVED BY THE CONTRACTOR AND SHALL BE DISPOSED OF BY THEM OUTSIDE THE RIGHT-OF-WAY AT THEIR EXPENSE. THE SALVAGE VALUE OF THE REMOVED EQUIPMENT SHALL BE REFLECTED IN THE CONTRACT BID PRICE.

- 8 EACH PEDESTRIAN SIGNAL HEAD
- 6 EACH PEDESTRIAN PUSH-BUTTON

SCHEDULE OF QUANTITIES

ITEM	UNIT	QUANTITY
MAINTENANCE OF EXISTING TRAFFIC SIGNAL INSTALLATION	EACH	1
PEDESTRIAN SIGNAL HEAD, LED, 1-FACE, BM WITH COUNTDOWN TIMER	EACH	4
PEDESTRIAN SIGNAL HEAD, LED, 2-FACE, BM WITH COUNTDOWN TIMER	EACH	2
MODIFY EXISTING CONTROLLER CABINET	EACH	1
REMOVE EXISTING TRAFFIC SIGNAL EQUIPMENT	EACH	1
PEDESTRIAN PUSH-BUTTON, NON-LATCHING	EACH	6
UNINTERRUPTIBLE POWER SUPPLY SPECIAL	EACH	1

FILE NAME =	USER NAME = plascencia	DESIGNED - IP	REVISED -
#FILEABBREV#		DRAWN - IP	REVISED -
		CHECKED - AW	REVISED -
		DATE - 10/25/2011	REVISED -

STATE OF ILLINOIS	SCHEDULE OF QUANTITIES, CABLE PLAN, PHASE DESIGNATION DIAGRAM AND EMERGENCY VEHICLE PREEMPTION SEQUENCE	F.A.U. RTE.	SECTION	COUNTY	TOTAL SHEETS	SHEET NO.
DEPARTMENT OF TRANSPORTATION	IL RTE 31 AND McCULLOM LAKE RD	-	2011-208-TS	McHENRY	57	26
	SCALE: 1" =	SHEET NO.	OF	SHEETS	STA.	TO STA.
						ILLINOIS

STATE OF ILLINOIS	DEPARTMENT OF TRANSPORTATION
-------------------	------------------------------

SCHEDULE OF QUANTITIES, CABLE PLAN, PHASE DESIGNATION DIAGRAM AND EMERGENCY VEHICLE PREEMPTION SEQUENCE	F.A.U. RTE.	SECTION	COUNTY	TOTAL SHEETS	SHEET NO.
IL RTE 31 AND McCULLOM LAKE RD	-	2011-208-TS	McHENRY	57	26
SCALE: 1" =	SHEET NO.	OF	SHEETS	STA.	TO STA.
					ILLINOIS

CONTRACT NO. 60R37
