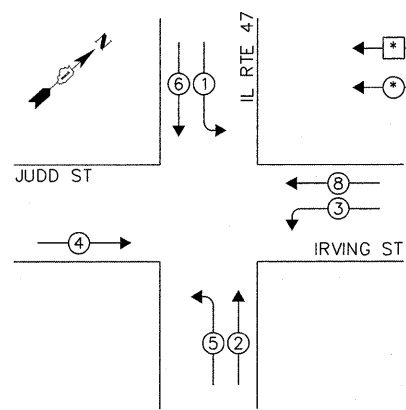


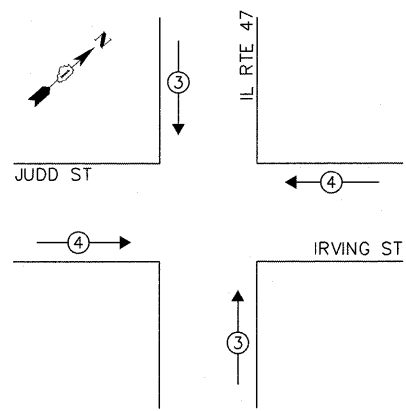
CONTROLLER SEQUENCE



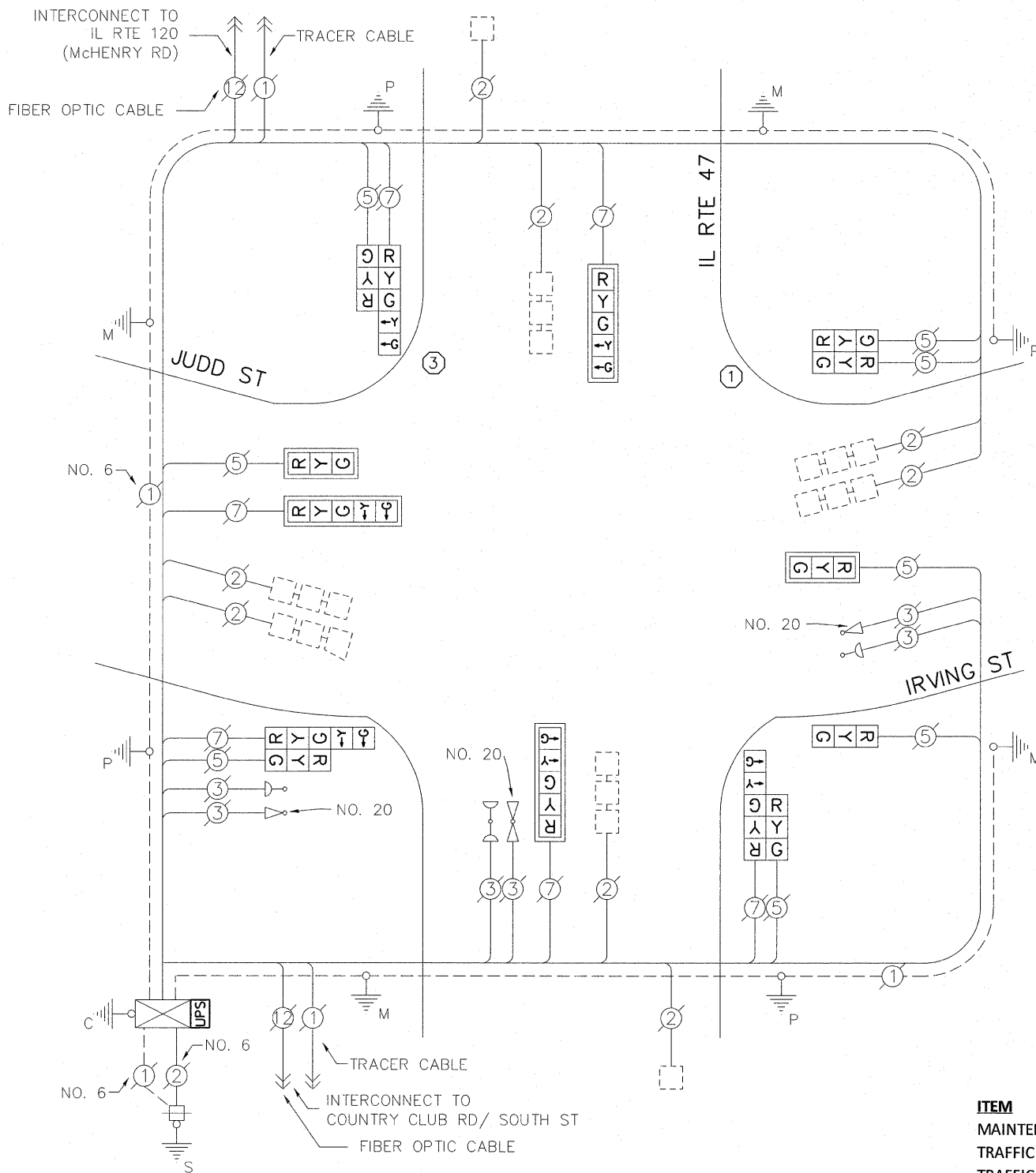
LEGEND:
 ◻ SINGLE ENTRY PHASE
 ◉ DUAL ENTRY PHASE

PHASE DESIGNATION DIAGRAM

EMERGENCY VEHICLE PREEMPTION SEQUENCE



EXISTING EMERGENCY VEHICLE PREEMPTORS		
EMERGENCY VEHICLE PREEMPTOR	3	4
MOVEMENT	↑	←



CABLE PLAN

RETROFIT ALL EXISTING TRAFFIC SIGNAL HEADS TO L.E.D.

- ① REPLACE 14FT PAINTED POST. RE-USE EXISTING TYPE A CONCRETE FOUNDATION.
- ② REPLACE 15FT PAINTED POST. RE-USE EXISTING TYPE A CONCRETE FOUNDATION.
- ③ REPLACE 16FT PAINTED POST. RE-USE EXISTING TYPE A CONCRETE FOUNDATION.
- ④ REPLACE 18FT PAINTED POST. RE-USE EXISTING TYPE A CONCRETE FOUNDATION.
- ⑤ REPLACE 3.5FT PAINTED POST. RE-USE EXISTING TYPE A CONCRETE FOUNDATION.

THE FOLLOWING ITEMS SHALL BE REMOVED BY THE CONTRACTOR AND SHALL BE DISPOSED OF BY THEM OUTSIDE THE RIGHT-OF-WAY AT THEIR EXPENSE. THE SALVAGE VALUE OF THE REMOVED EQUIPMENT SHALL BE REFLECTED IN THE CONTRACT BID PRICE.

2 EACH STEEL POST

SCHEDULE OF QUANTITIES

ITEM	UNIT	QUANTITY
MAINTENANCE OF EXISTING TRAFFIC SIGNAL INSTALLATION	EACH	1
TRAFFIC SIGNAL POST, GALVANIZED STEEL, 14 FT	EACH	1
TRAFFIC SIGNAL POST, GALVANIZED STEEL, 16 FT	EACH	1
RELOCATE EXISTING SIGNAL HEAD	EACH	4
MODIFY EXISTING CONTROLLER CABINET	EACH	1
REMOVE EXISTING TRAFFIC SIGNAL EQUIPMENT	EACH	1
SIGNAL HEAD, LED, 2-FACE, 1-3 SECTION, 1-5 SECTION, BM, RETROFIT	EACH	3
SIGNAL HEAD, LED, 1-FACE, 3-SECTION, BM, RETROFIT	EACH	1
SIGNAL HEAD, LED, 1-FACE, 3-SECTION, MAM, RETROFIT	EACH	2
SIGNAL HEAD, LED, 1-FACE, 5-SECTION, MAM, RETROFIT	EACH	3
SIGNAL HEAD, LED, 2-FACE, 3-SECTION, BM, RETROFIT	EACH	1
UNINTERRUPTIBLE POWER SUPPLY SPECIAL	EACH	1

I.D.O.T. TRAFFIC SIGNAL INSTALLATION ELECTRICAL SERVICE REQUIREMENTS					TOTAL WATTAGE
TYPE	NO. OF LAMPS	WATTAGE	% OPERATION		
SIGNAL (RED)	14	INCAND. 17	0.50		119.00
(YELLOW)	14	25	0.25		87.50
(GREEN)	14	15	0.25		52.50
ARROW	12	12	0.10		14.40
PED. SIGNAL	-	25	1.00		-
CONTROLLER	1	100	1.00		100.00
ILLUM. SIGN	-	25	0.05		-
VIDEO SYSTEM	-	-	1.00		-
FLASHER	-	-	0.50		-
ENERGY COSTS TO:				TOTAL =	373.40

CITY OF WOODSTOCK
 121 WEST CALHOUN STREET
 WOODSTOCK, IL 60098
 ENERGY SUPPLY: CONTACT: MIKE LENOX
 PHONE: (815) 490-2869
 COMPANY: COMMONWEALTH EDISON