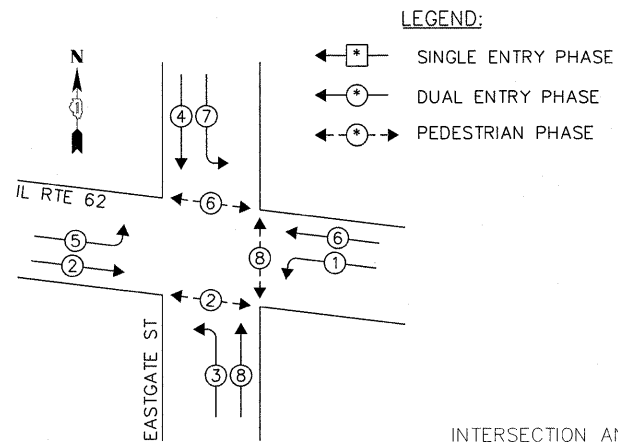


CONTROLLER SEQUENCE

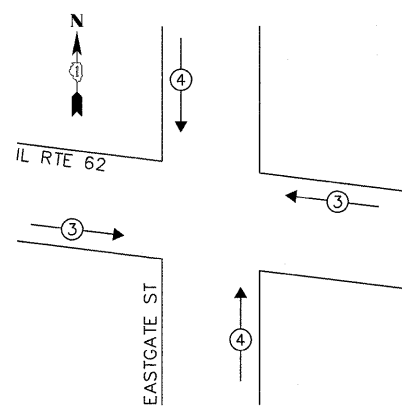


LEGEND:

- ◻ SINGLE ENTRY PHASE
- ◯ DUAL ENTRY PHASE
- ◯\* PEDESTRIAN PHASE

PHASE DESIGNATION DIAGRAM

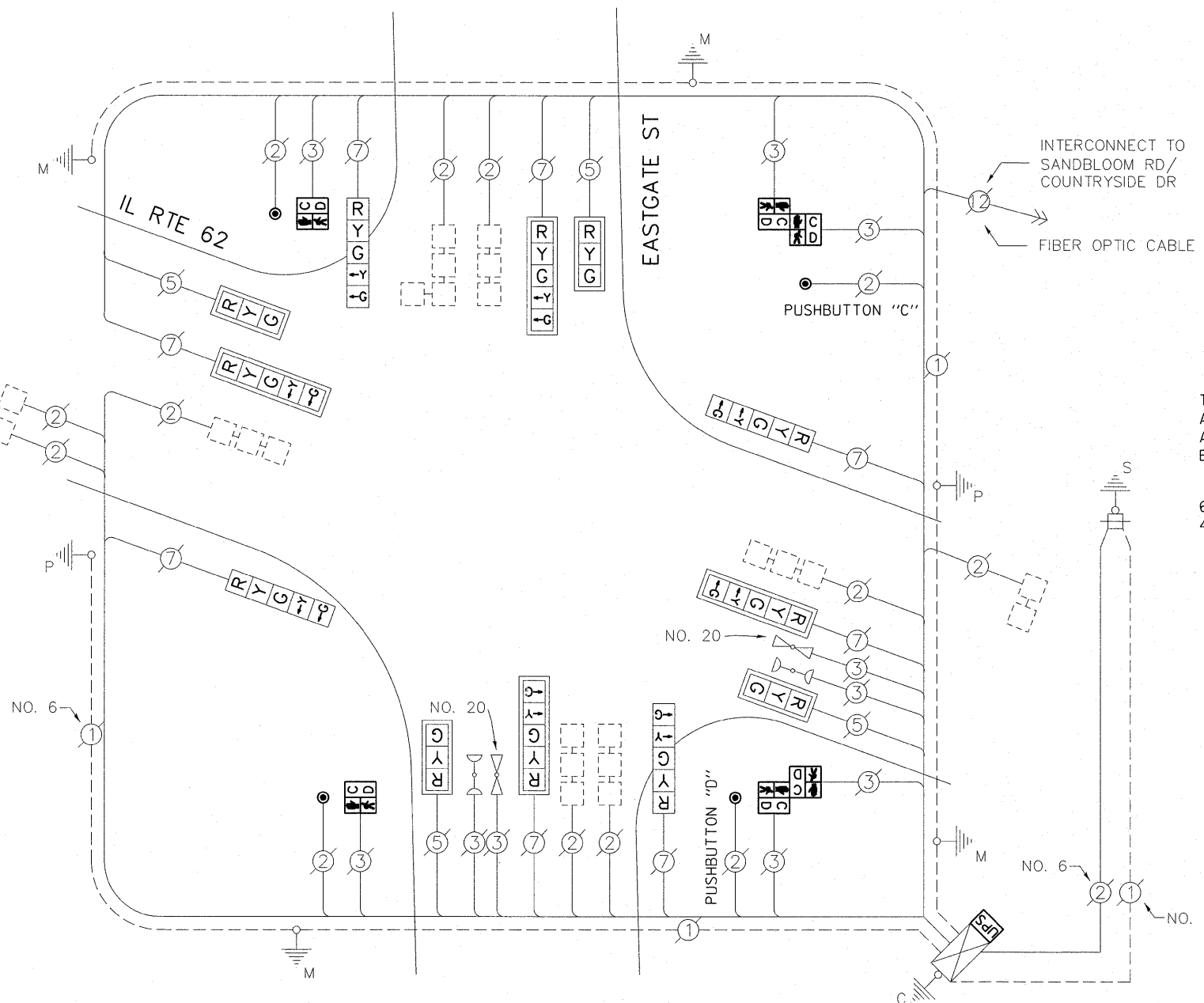
EMERGENCY VEHICLE PREEMPTION SEQUENCE



EXISTING EMERGENCY VEHICLE PREEMPTORS

EMERGENCY VEHICLE PREEMPTOR	3	4
MOVEMENT		

INTERSECTION AND (SAMPLING) SYSTEM DETECTORS



CABLE PLAN

RETROFIT ALL EXISTING TRAFFIC SIGNAL HEADS TO L.E.D.

THE FOLLOWING ITEMS SHALL BE REMOVED BY THE CONTRACTOR AND SHALL BE DISPOSED OF BY THEM OUTSIDE THE RIGHT-OF-WAY AT THEIR EXPENSE. THE SALVAGE VALUE OF THE REMOVED EQUIPMENT SHALL BE REFLECTED IN THE CONTRACT BID PRICE.

- 6 EACH PEDESTRIAN SIGNAL HEAD
- 4 EACH PEDESTRIAN PUSH-BUTTON

I.D.O.T. TRAFFIC SIGNAL INSTALLATION ELECTRICAL SERVICE REQUIREMENTS					TOTAL WATTAGE
TYPE	NO. OF LAMPS	WATTAGE		% OPERATION	
SIGNAL (RED)	12	INCAND.	17	0.50	102.00
(YELLOW)	12		25	0.25	75.00
(GREEN)	12		15	0.25	45.00
ARROW	16		12	0.10	19.20
PED. SIGNAL	6		25	1.00	150.00
CONTROLLER	1		100	1.00	100.00
ILLUM. SIGN	-		25	0.05	-
VIDEO SYSTEM	-		-	1.00	-
FLASHER				0.50	
ENERGY COSTS TO:				TOTAL =	491.20
VILLAGE OF ALGONQUIN					
2200 HARNISH DRIVE ALGONQUIN, IL 60102					
ENERGY SUPPLY: CONTACT: MIKE LENOX					
PHONE: (815) 490-2869					
COMPANY: COMMONWEALTH EDISON					
FILE NAME =	USER NAME = plascencia	DESIGNED - IP	REVISED -		
#FILEABBREV#		DRAWN - IP	REVISED -		
	PLOT SCALE = 20.0000' / 1"	CHECKED - AW	REVISED -		
	PLOT DATE = 10/27/2011	DATE - 10/25/2011	REVISED -		

NOTE:

PUSHBUTTON "C" SHALL PLACE A CALL IN PHASES 6 AND 8  
PUSHBUTTON "D" SHALL PLACE A CALL IN PHASES 2 AND 8

SCHEDULE OF QUANTITIES

ITEM	UNIT	QUANTITY
MAINTENANCE OF EXISTING TRAFFIC SIGNAL INSTALLATION	EACH	1
PEDESTRIAN SIGNAL HEAD, LED, 1-FACE, BM WITH COUNTDOWN TIMER	EACH	2
PEDESTRIAN SIGNAL HEAD, LED, 2-FACE, BM WITH COUNTDOWN TIMER	EACH	2
MODIFY EXISTING CONTROLLER CABINET	EACH	1
REMOVE EXISTING TRAFFIC SIGNAL EQUIPMENT	EACH	1
SIGNAL HEAD, LED, 1-FACE, 3-SECTION, MAM, RETROFIT	EACH	4
SIGNAL HEAD, LED, 1-FACE, 5-SECTION, MAM, RETROFIT	EACH	4
PEDESTRIAN PUSH-BUTTON, NON-LATCHING	EACH	4
SIGNAL HEAD, LED, 1-FACE, 5-SECTION, BM, RETROFIT	EACH	4
UNINTERRUPTIBLE POWER SUPPLY SPECIAL	EACH	1

STATE OF ILLINOIS  
DEPARTMENT OF TRANSPORTATION

SCHEDULE OF QUANTITIES, CABLE PLAN, PHASE DESIGNATION DIAGRAM  
AND EMERGENCY VEHICLE PREEMPTION SEQUENCE  
IL RTE 62 AND EASTGATE ST

F.A.U. RTE.	SECTION	COUNTY	TOTAL SHEETS	SHEET NO.
-	2011-208-TS	McHENRY	57	38
				CONTRACT NO. 60R37
ILLINOIS				

SCALE: 1" = SHEET NO. OF SHEETS STA. TO STA.