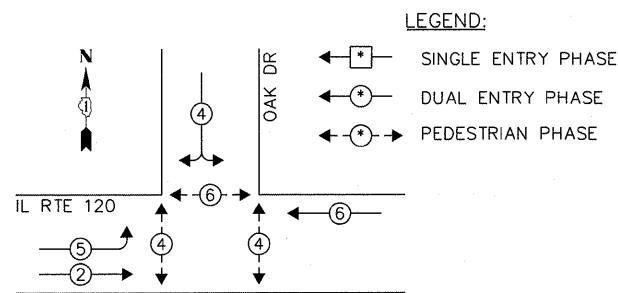
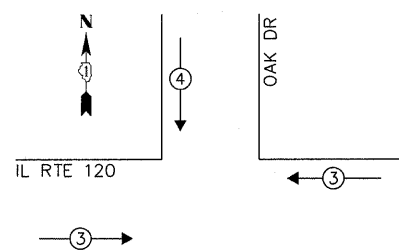


CONTROLLER SEQUENCE



PHASE DESIGNATION DIAGRAM

EMERGENCY VEHICLE PREEMPTION SEQUENCE

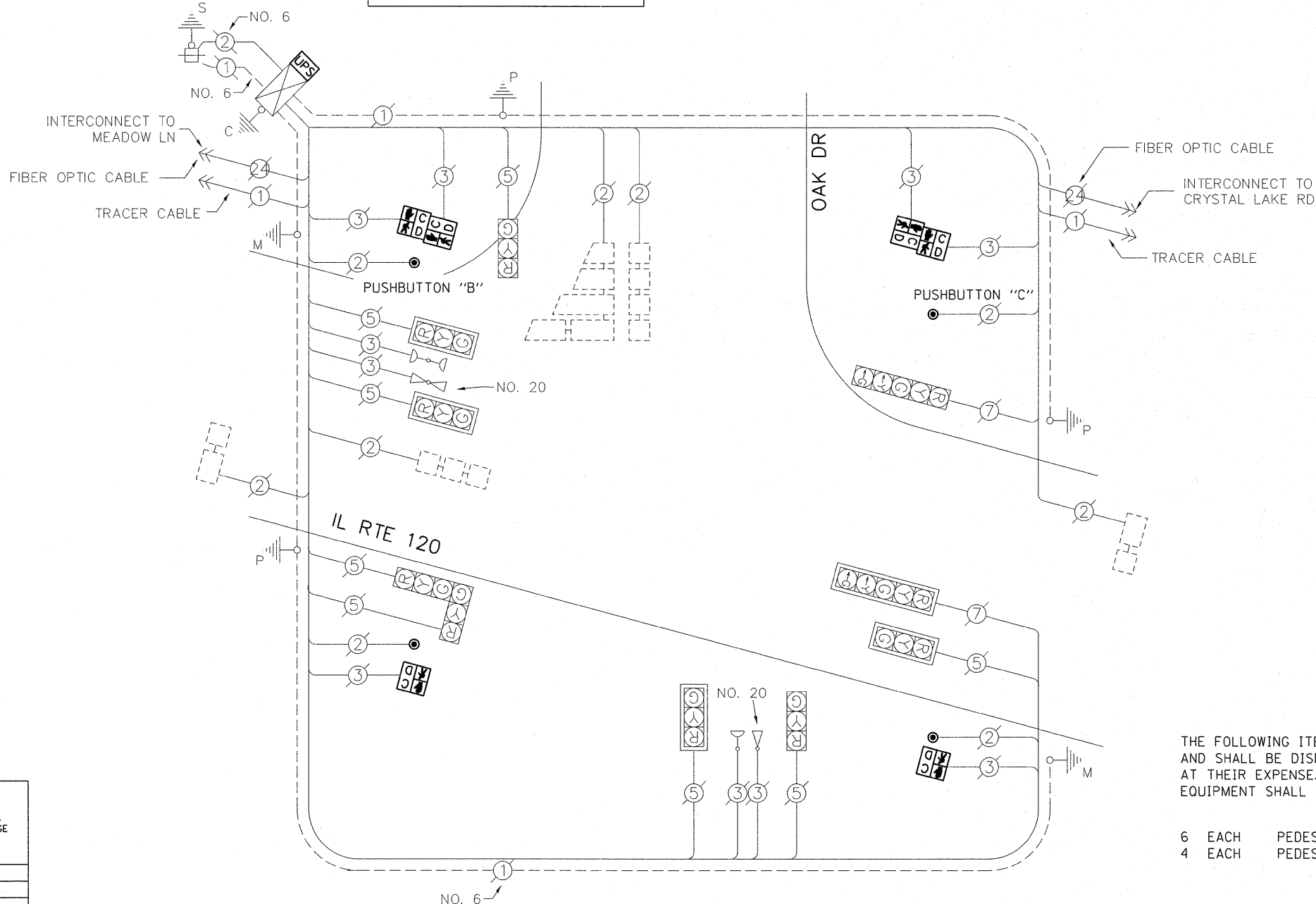


EXISTING EMERGENCY VEHICLE PREEMPTORS		
EMERGENCY VEHICLE PREEMPTOR	3	4
MOVEMENT	←	↓

LEGEND:

- ◻ SINGLE ENTRY PHASE
- ◉ DUAL ENTRY PHASE
- ◉ PEDESTRIAN PHASE

UPS SHALL BE INSTALLED ON LEFT SIDE OF CONTROLLER CABINET DUE TO PHYSICAL CONSTRAINTS, OR AS DIRECTED BY THE ENGINEER.



CABLE PLAN

NOTE:

PUSHBUTTONS "B" AND "C" SHALL PLACE A CALL IN PHASES 4 AND 6

THE FOLLOWING ITEMS SHALL BE REMOVED BY THE CONTRACTOR AND SHALL BE DISPOSED OF BY THEM OUTSIDE THE RIGHT-OF-WAY AT THEIR EXPENSE. THE SALVAGE VALUE OF THE REMOVED EQUIPMENT SHALL BE REFLECTED IN THE CONTRACT BID PRICE.

- 6 EACH PEDESTRIAN SIGNAL HEAD
- 4 EACH PEDESTRIAN PUSH-BUTTON

SCHEDULE OF QUANTITIES

ITEM	UNIT	QUANTITY
MAINTENANCE OF EXISTING TRAFFIC SIGNAL INSTALLATION	EACH	1
PEDESTRIAN SIGNAL HEAD, LED, 1-FACE, BM WITH COUNTDOWN TIMER	EACH	2
PEDESTRIAN SIGNAL HEAD, LED, 2-FACE, BM WITH COUNTDOWN TIMER	EACH	2
MODIFY EXISTING CONTROLLER CABINET	EACH	1
REMOVE EXISTING TRAFFIC SIGNAL EQUIPMENT	EACH	1
PEDESTRIAN PUSH-BUTTON, NON-LATCHING	EACH	4
UNINTERRUPTIBLE POWER SUPPLY SPECIAL	EACH	1

I.D.O.T. TRAFFIC SIGNAL INSTALLATION ELECTRICAL SERVICE REQUIREMENTS					TOTAL WATTAGE
TYPE	NO. OF LAMPS	WATTAGE		% OPERATION	
		INCAND.	LED		
SIGNAL (RED)	10		17	0.50	85.00
(YELLOW)	10		25	0.25	62.50
(GREEN)	10		15	0.25	37.50
ARROW	4		12	0.10	4.80
PED. SIGNAL	6		25	1.00	150.00
CONTROLLER	1		100	1.00	100.00
ILLUM. SIGN	-		25	0.05	-
VIDEO SYSTEM	-		-	1.00	-
FLASHER				0.50	
ENERGY COSTS TO:					TOTAL = 439.80
CITY OF MCHENRY					
333 SOUTH GREEN STREET MCHENRY, IL 60050					
ENERGY SUPPLY: CONTACT: MIKE LENOX					
PHONE: (815) 490-2869					
COMPANY: COMMONWEALTH EDISON					
FILE NAME =	USER NAME = plascencia	DESIGNED - IP	REVISED -		
#FILEABBREV#		DRAWN - IP	REVISED -		
		CHECKED - AW	REVISED -		
		DATE - 10/25/2011	REVISED -		
		STATE OF ILLINOIS DEPARTMENT OF TRANSPORTATION		SCHEDULE OF QUANTITIES, CABLE PLAN, PHASE DESIGNATION DIAGRAM AND EMERGENCY VEHICLE PREEMPTION SEQUENCE IL RTE 120 AND OAK DR	
SCALE: 1" =		SHEET NO. OF SHEETS STA. TO STA.		F.A.U. RTE.	SECTION
				-	2011-208-TS
				COUNTY	
				MCHENRY	
				TOTAL SHEETS	SHEET NO.
				57	45
				CONTRACT NO. 60R37	
				ILLINOIS	