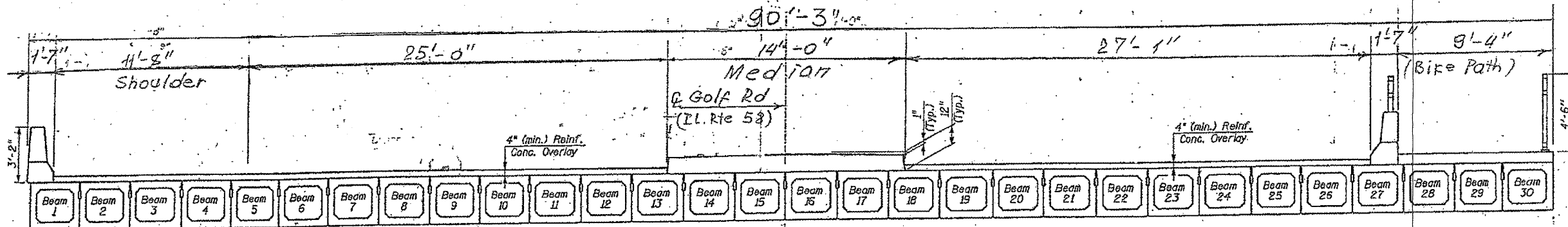
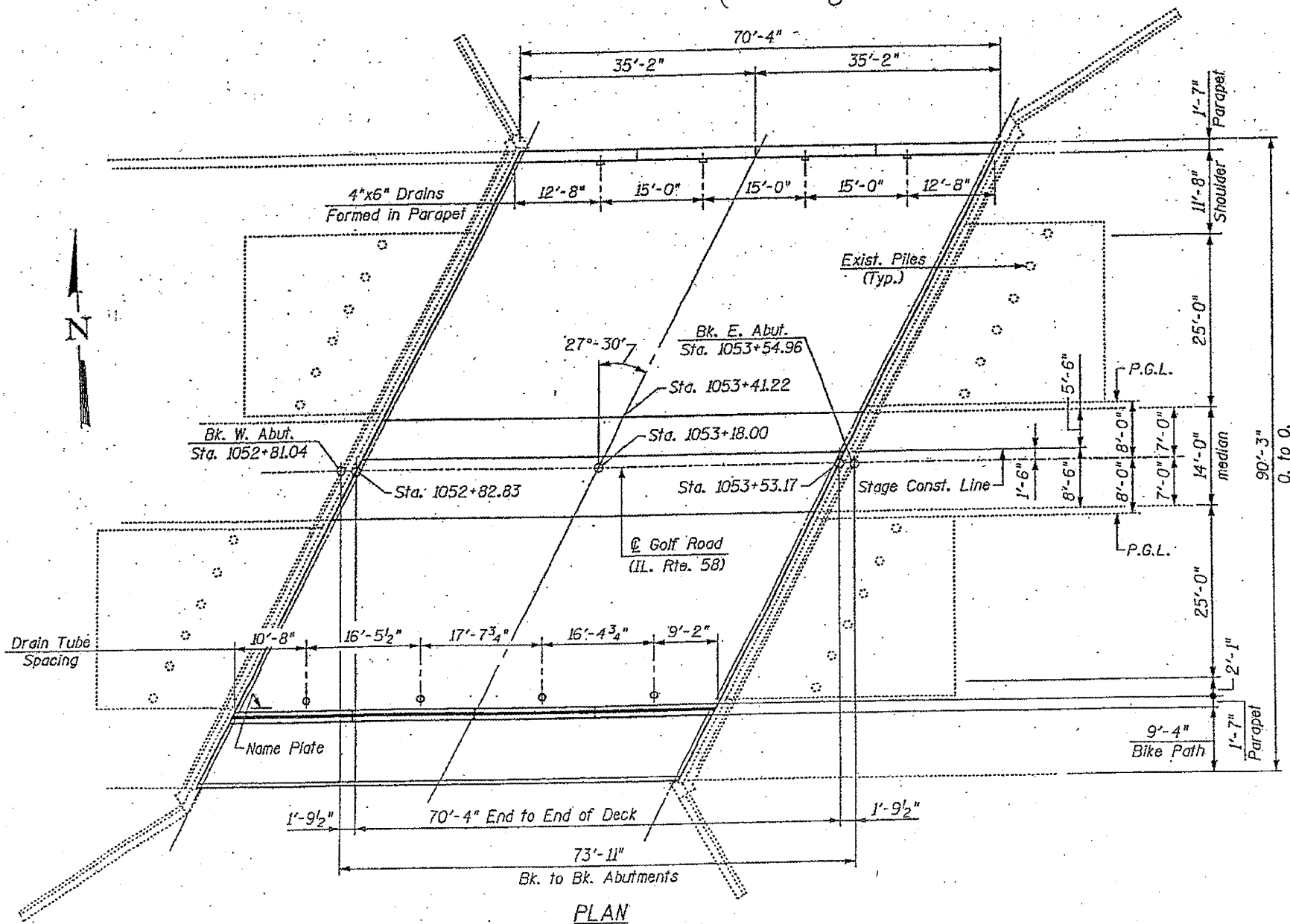


ROUTE	SECTION	COUNTY	TOTAL SHEETS	SHEET NUMBER
VARIOUS	2011-215-I	VARIOUS	22	12

CONTRACT NO. 60R57



CROSS SECTION
(Looking East)



FOR INFORMATION ONLY

ILLINOIS DEPARTMENT OF
TRANSPORTATION

EXISTING PLANS
LOCATION 3 (SN 016-0349)