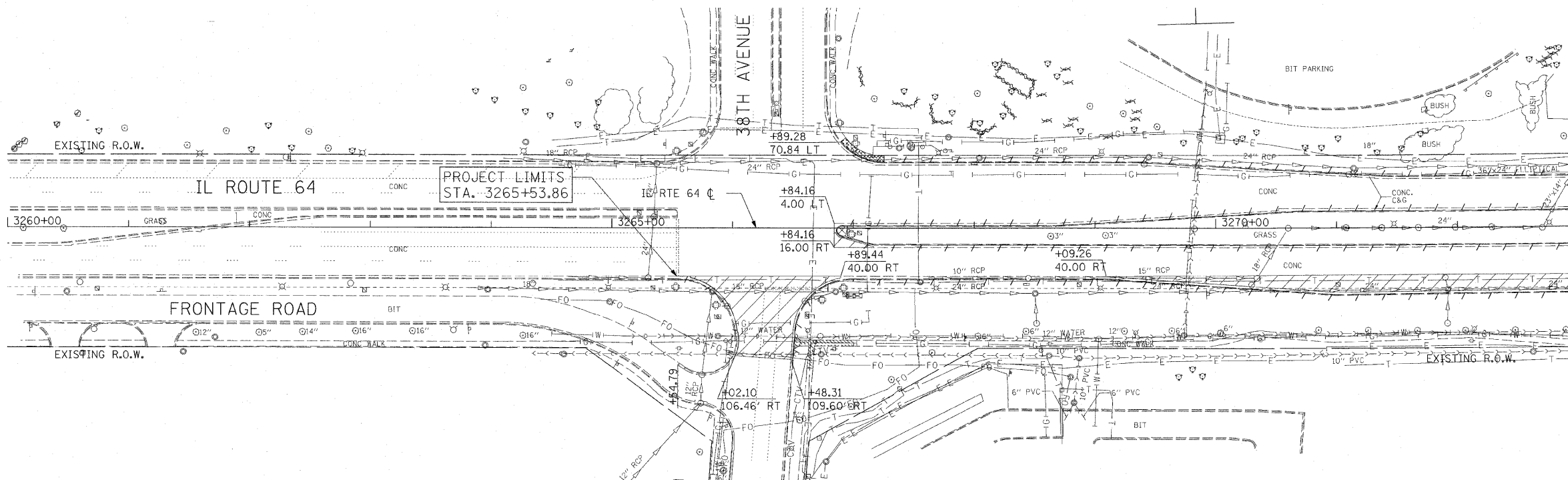
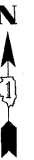


|                     |          |                  |              |           |
|---------------------|----------|------------------|--------------|-----------|
| F.A.P. RTE.         | SECTION  | COUNTY           | TOTAL SHEETS | SHEET NO. |
| 307                 | 130 R-2  | DUPAGE, KANE     | 647          | 56        |
| STA.                | 3260+00  | TO STA.          | 3273+00      |           |
| FED. ROAD DIST. NO. | ILLINOIS | FED. AID PROJECT |              |           |

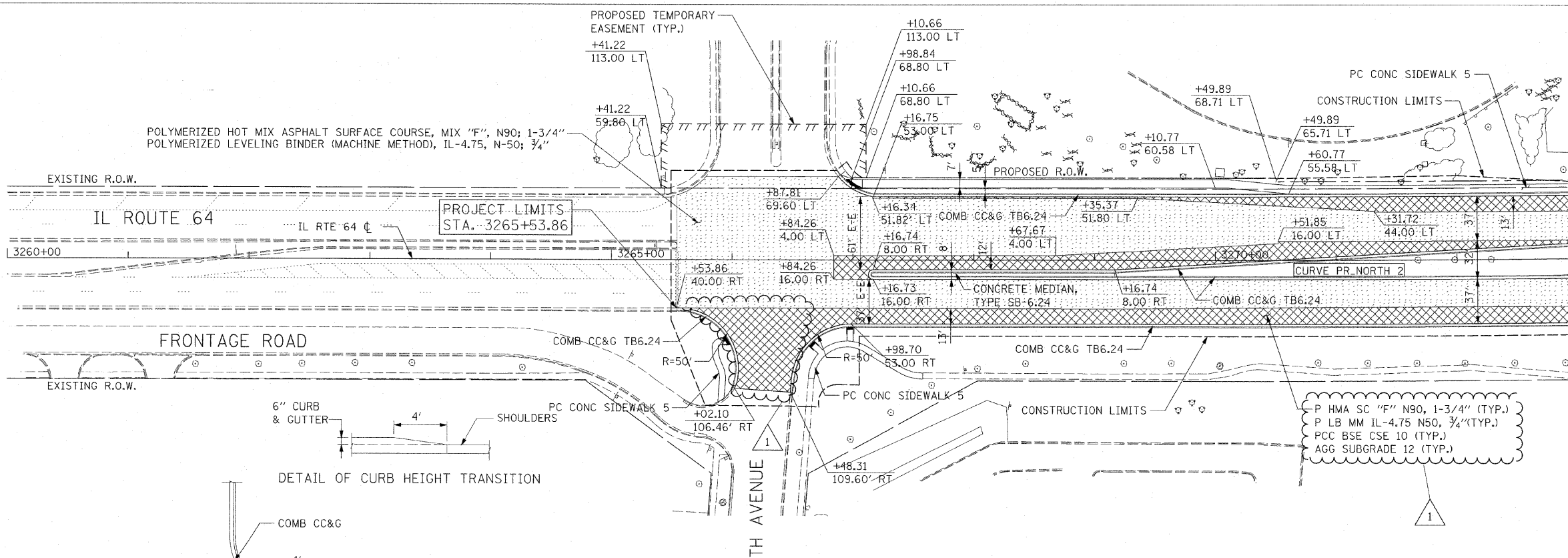
62410



MATCH LINE STA 3273+00  
SEE SHEET RDWY-2

- REMOVAL LEGEND:**
- PAVEMENT REMOVAL
  - MEDIAN REMOVAL
  - DRIVEWAY PAVEMENT REMOVAL
  - PAVED SHOULDER REMOVAL
  - COMB CURB GUTTER REMOVAL
  - SIDEWALK REMOVAL
  - TREE REMOVAL
  - TREE REMOVAL, ACRES

EXISTING CONDITIONS AND REMOVALS

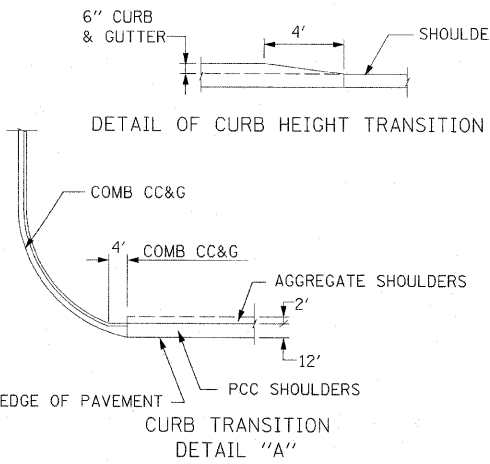


MATCH LINE STA 3273+00  
SEE SHEET RDWY-2

**NOTE:**  
 1. SEE INTERSECTION DETAIL SHEETS FOR GEOMETRIC INFORMATION AT 38TH AVENUE AND IL ROUTE 64.

- PROPOSED LEGEND:**
- PAVEMENT WIDENING
  - HMA RESURFACING

POLYMERIZED HOT MIX ASPHALT SURFACE COURSE, MIX "F", N90; 1-3/4"  
 POLYMERIZED LEVELING BINDER (MACHINE METHOD), IL-4.75, N-50; 3/4"



PROPOSED ROADWAY PLAN



| REVISIONS      |          |
|----------------|----------|
| NAME           | DATE     |
| ADDENDUM NO. 1 | 12/23/11 |
|                |          |
|                |          |
|                |          |
|                |          |
|                |          |

ILLINOIS DEPARTMENT OF TRANSPORTATION  
 F.A.P. ROUTE 307 (ILLINOIS ROUTE 64)

**ROADWAY PLAN**  
 IL ROUTE 64  
 STA. 3260+00 TO STA. 3273+00

SCALE: 1" = 50'  
 DATE: DECEMBER 2, 2011

DRAWN BY: AFC  
 CHECKED BY: NJH



RDWY-1