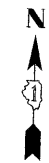
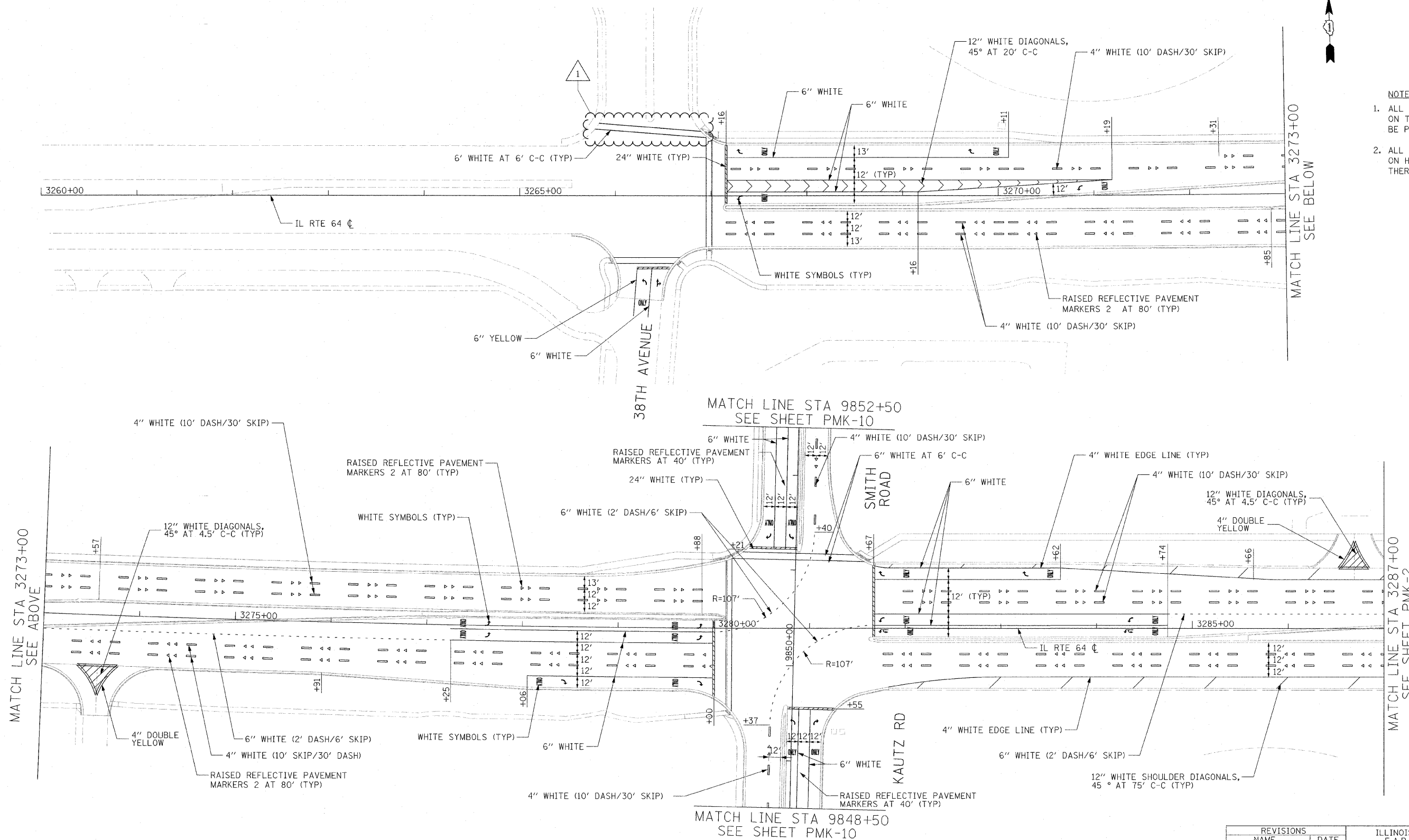


F.A.P. RTE.	SECTION	COUNTY	TOTAL SHEETS	SHEET NO.
307	130 R-2	DUPAGE, KANE	647	262
STA. 3260+00		TO STA. 3287+00		
FED. ROAD DIST. NO.		ILLINOIS FED. AID PROJECT		

62410

NOTES:

1. ALL FINAL PAVEMENT MARKINGS ON THE FINAL PCC SURFACE SHALL BE POLYUREA TYPE 1.
2. ALL FINAL PAVEMENT MARKINGS ON HMA SURFACES SHALL BE THERMOPLASTIC.



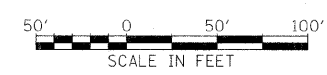
MATCH LINE STA 3273+00
SEE ABOVE

MATCH LINE STA 3287+00
SEE SHEET PMK-2

MATCH LINE STA 9848+50
SEE SHEET PMK-10

MATCH LINE STA 9852+50
SEE SHEET PMK-10

PMK-1



REVISIONS	
NAME	DATE
ADDENDUM NO. 1	12/23/11

ILLINOIS DEPARTMENT OF TRANSPORTATION
 F.A.P. ROUTE 307 (ILLINOIS ROUTE 64)
PAVEMENT MARKING PLAN
 IL ROUTE 64
 STA. 3260+00 TO STA. 3287+00

SCALE: VERT: NONE
 HORIZ: 1"=50'
 DATE: DECEMBER 2, 2011

DRAWN BY: JWM
 CHECKED BY: RMG