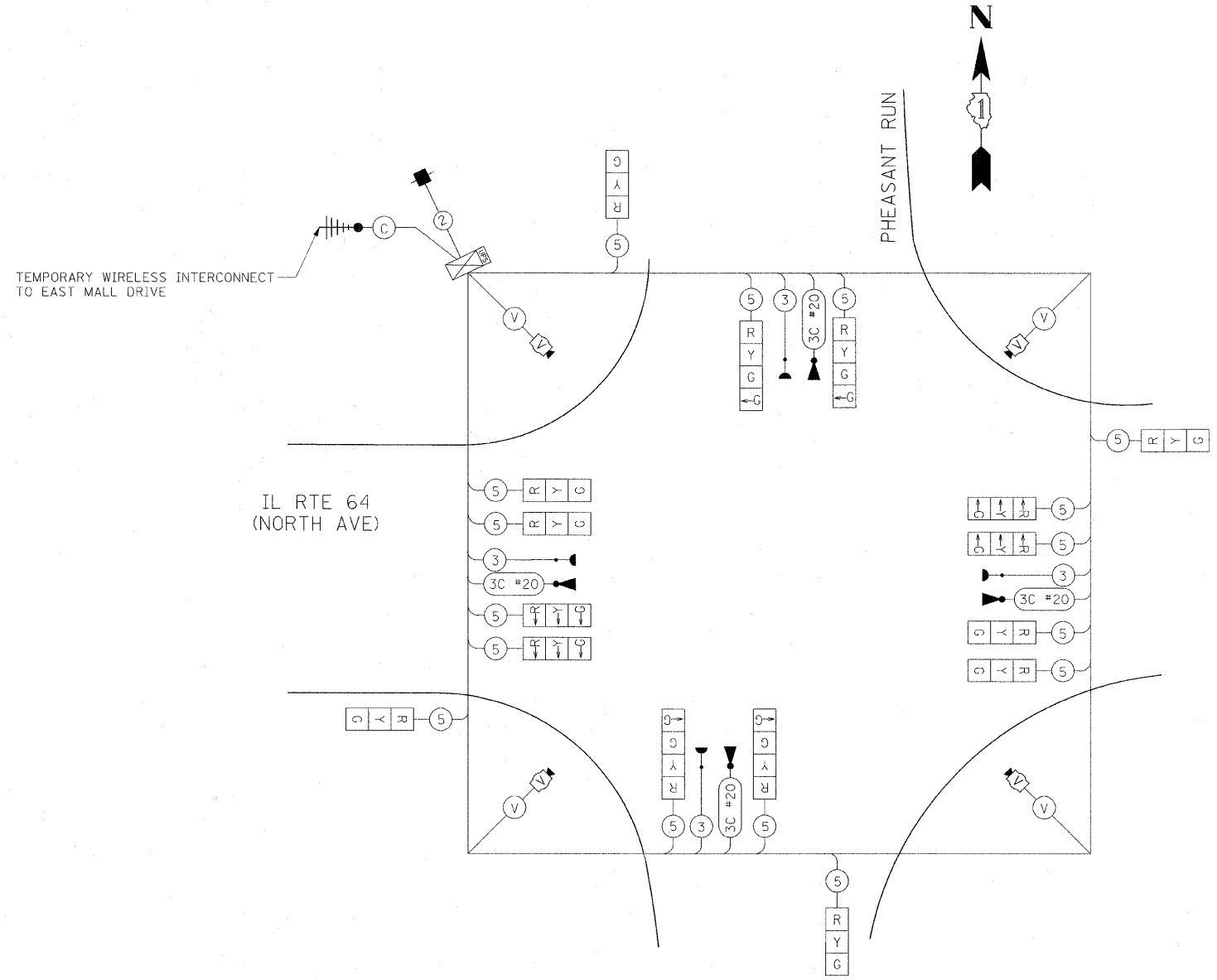
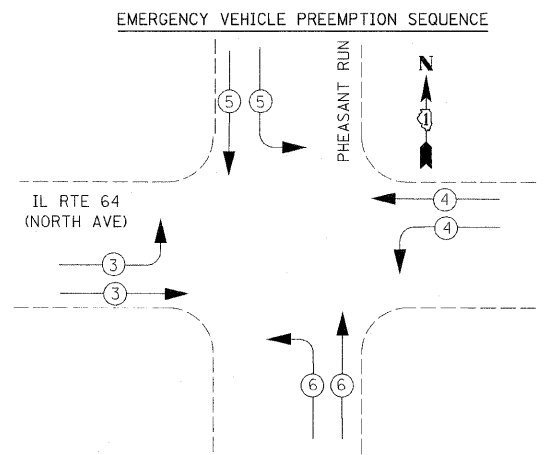
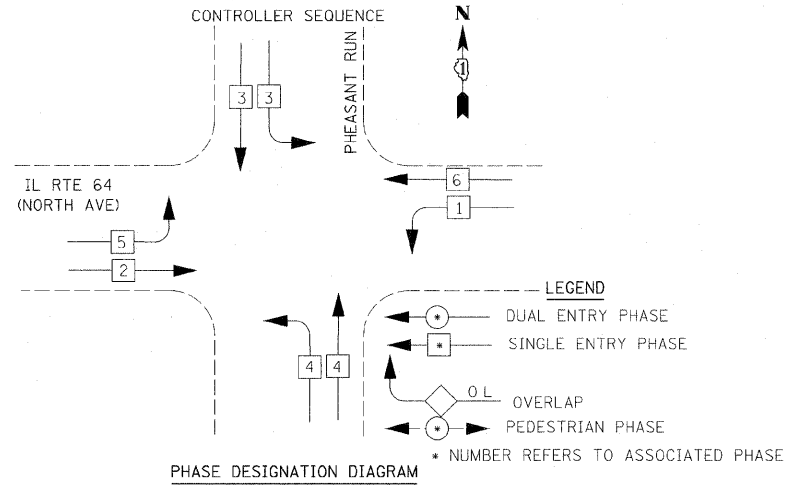


F.A.P. RTE.	SECTION	COUNTY	TOTAL SHEETS	SHEET NO.
307	130 R-2	DUPAGE, KANE	647	355
STA.		TO STA.		
FED. ROAD DIST. NO.		ILLINOIS FED. AID PROJECT		

62410



CABLE PLAN  
 NOT TO SCALE



EMERGENCY VEHICLE PREEMPTOR	3	4	5	6
MOVEMENT				

TYPE	NO. LAMPS	WATTAGE		% OPERATION	TOTAL WATTAGE
		INCAND.	LED		
SIGNAL (RED)	16		17	50	136.00
(YELLOW)	16		25	25	100.00
(GREEN)	16		15	25	60.00
ARROW	4		12	10	4.80
PED. SIGNAL	0		25	100	0.00
CONTROLLER	1		100	100	100.00
ILLUM. SIGN	0		25	5	0.00
VIDEO SYSTEM	1	150		100	150.00
FLASHER				50	
TOTAL =					550.80

ENERGY COSTS TO:  
 ILLINOIS DEPARTMENT OF TRANSPORTATION  
 201 WEST CENTER COURT  
 SCHAUMBURG, ILLINOIS 60196-1096

ENERGY SUPPLY CONTACT: THOMAS BRUHL  
 PHONE: (630) 377-4401  
 COMPANY: ST. CHARLES ELECTRICAL DEPARTMENT

NAME	DATE
ADDENDUM NO. 1	12/23/11

ILLINOIS DEPARTMENT OF TRANSPORTATION  
 IL RTE 64 & PHEASANT RUN  
 TEMPORARY CABLE PLAN &  
 TEMPORARY PHASE DESIGNATION  
 DIAGRAM & SCHEDULE OF QUANTITIES  
 STAGES 1, 1A, & 2

SCALE: NONE  
 DATE: NOVEMBER 1, 2011

DRAWN BY: JS  
 DESIGN BY: JS  
 CHECKED BY: WP