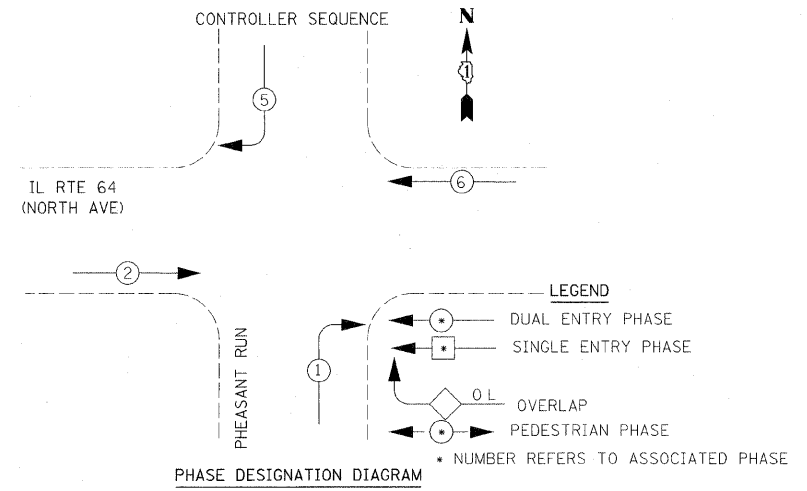
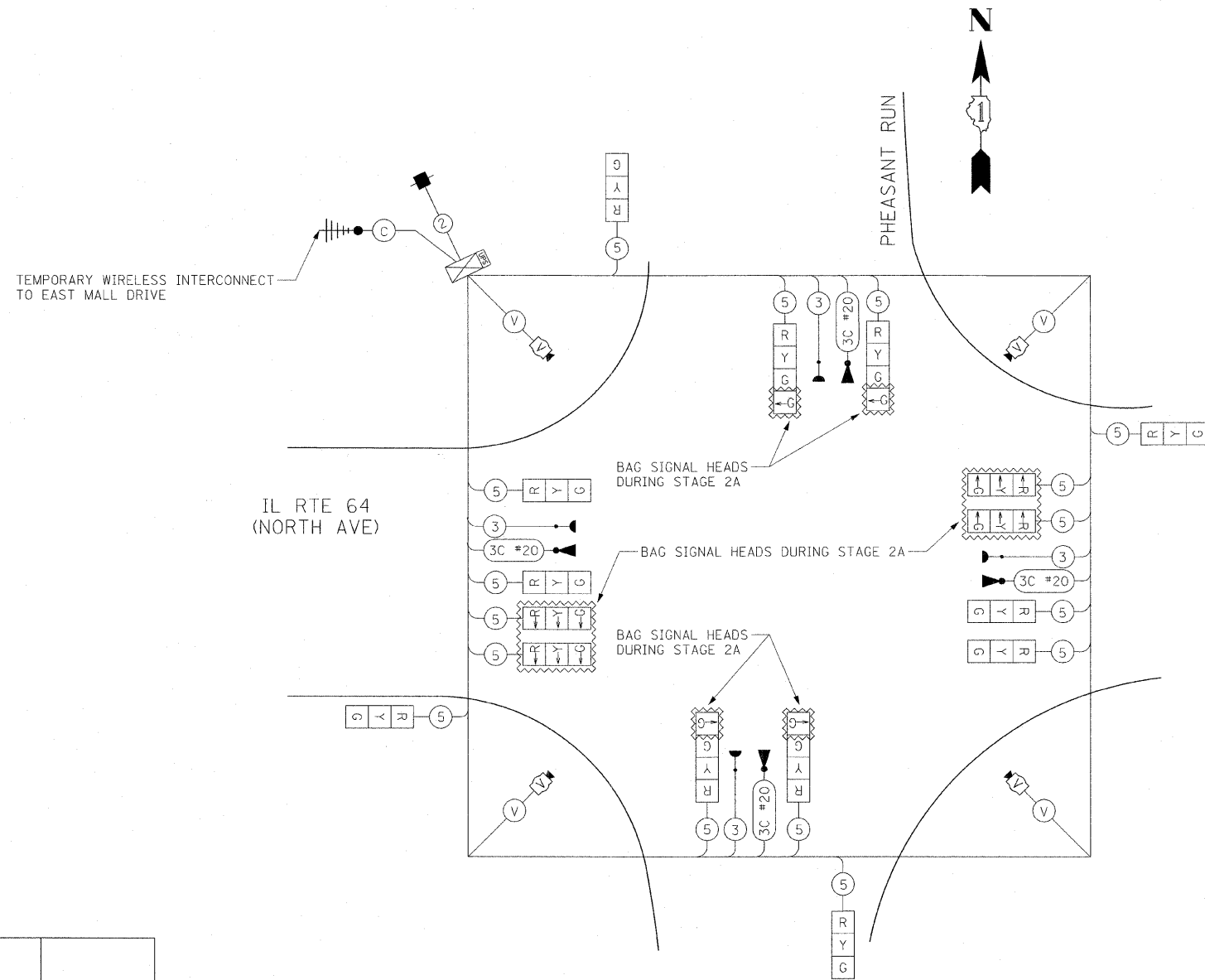
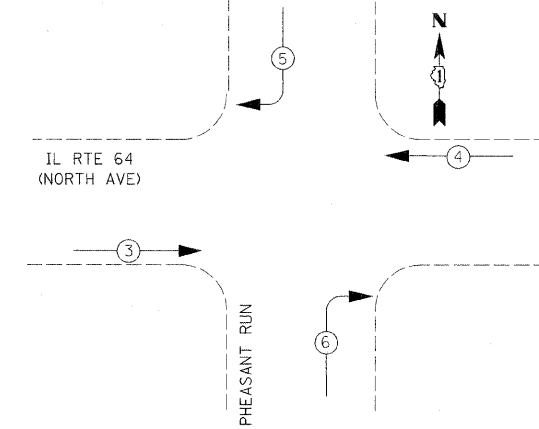


F.A.P. RTE.	SECTION	COUNTY	TOTAL SHEETS	SHEET NO.
307	130 R-2	DUPAGE, KANE	647	358
STA.		TO STA.		
FED. ROAD DIST. NO.		ILLINOIS FED. AID PROJECT		

62410



EMERGENCY VEHICLE PREEMPTION SEQUENCE



PROPOSED EMERGENCY VEHICLE PREEMPTORS				
EMERGENCY VEHICLE PREEMPTOR	3	4	5	6
MOVEMENT	→	←	↙	↘

CABLE PLAN
 NOT TO SCALE

I.D.O.T TRAFFIC SIGNAL INSTALLATION ELECTRICAL SERVICE REQUIREMENTS					TOTAL WATTAGE
TYPE	NO. LAMPS	WATTAGE		%OPERATION	
		INCAND.	LED		
SIGNAL (RED)	16		17	50	136.00
(YELLOW)	16		25	25	100.00
(GREEN)	16		15	25	60.00
ARROW	4		12	10	4.80
PED. SIGNAL	0		25	100	0.00
CONTROLLER	1		100	100	100.00
ILLUM. SIGN	0		25	5	0.00
VIDEO SYSTEM	1	150		100	150.00
FLASHER				50	
TOTAL =					590.80

ENERGY COSTS TO:
 ILLINOIS DEPARTMENT OF TRANSPORTATION
 201 WEST CENTER COURT
 SCHAUMBURG, ILLINOIS 60196-1096
 ENERGY SUPPLY CONTACT: THOMAS BRUHL
 PHONE: (630) 377-4401
 COMPANY: ST. CHARLES ELECTRICAL DEPARTMENT

REVISIONS	
NAME	DATE
ADDENDUM NO. 1	12/23/11

ILLINOIS DEPARTMENT OF TRANSPORTATION
 IL RTE 64 & PHEASANT RUN
 TEMPORARY CABLE PLAN &
 TEMPORARY PHASE DESIGNATION
 DIAGRAM & SCHEDULE OF QUANTITIES
 STAGE 2A
 SCALE: NONE
 DATE: NOVEMBER 1, 2011
 DRAWN BY: JS
 DESIGN BY: JS
 CHECKED BY: WP