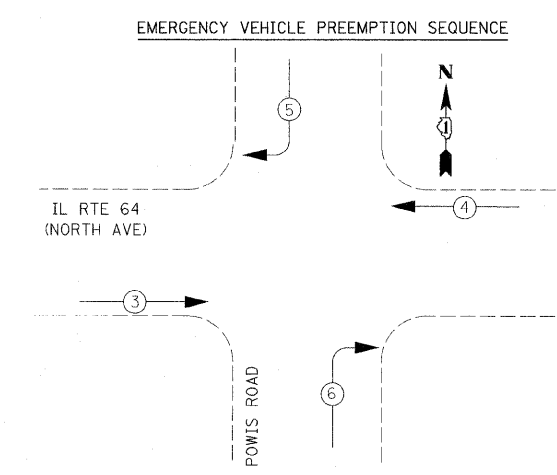
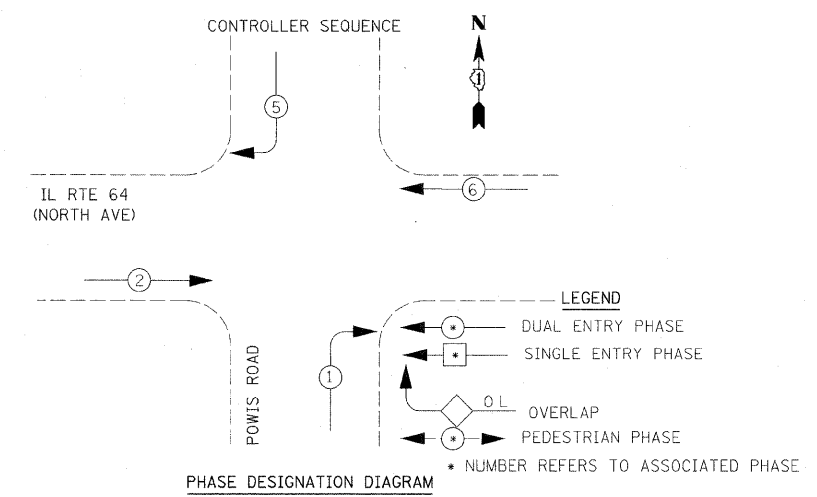
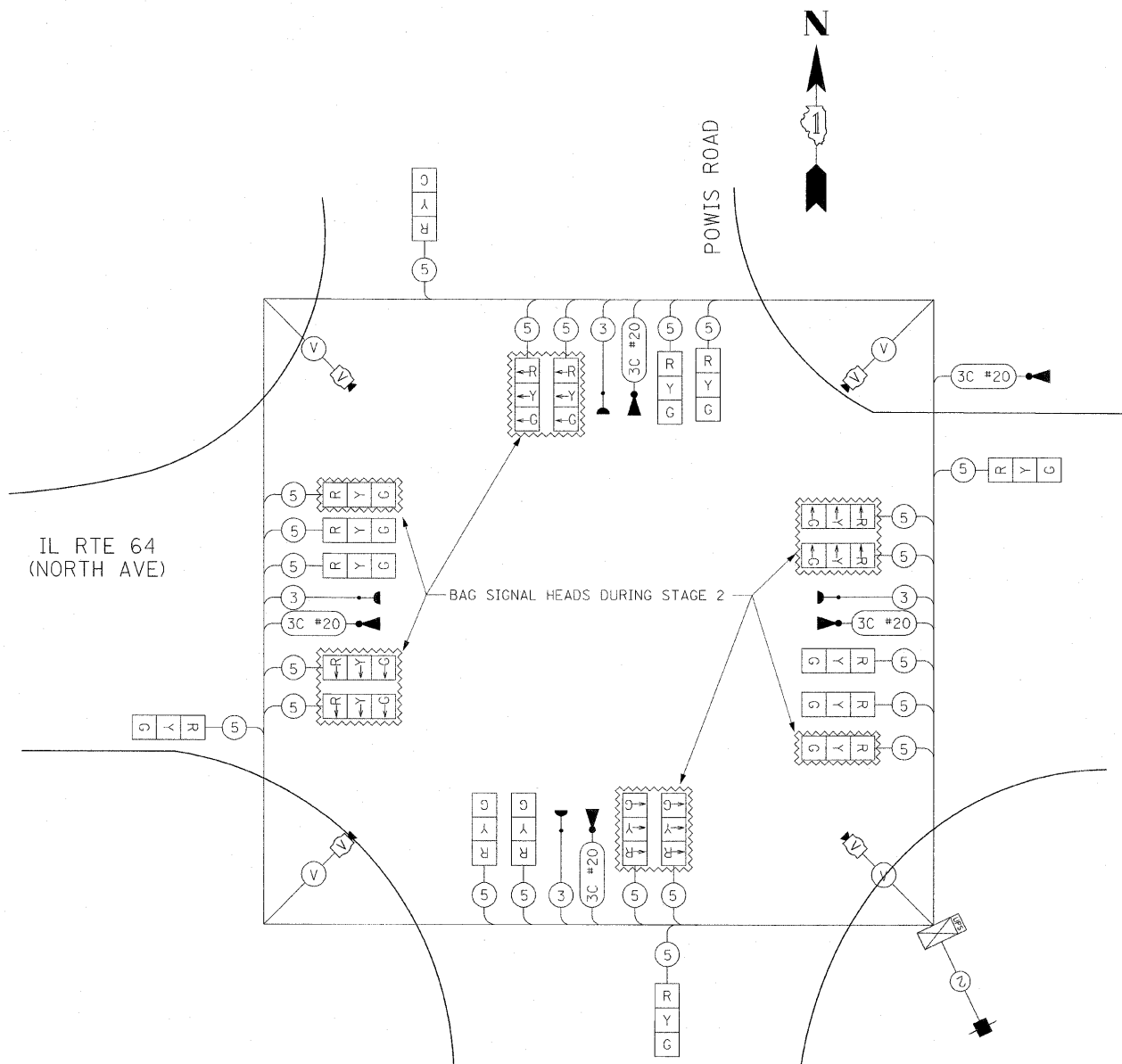


F.A.P. RTE.	SECTION	COUNTY	TOTAL SHEETS	SHEET NO.
307	130 R-2	DUPAGE, KANE	647	368
STA.	TO STA.			
FED. ROAD DIST. NO.	ILLINOIS	FED. AID PROJECT		

62410



EMERGENCY VEHICLE PREEMPTOR	3	4	5	6
MOVEMENT	→	←	↙	↘

TYPE	NO. LAMPS	WATTAGE		%OPERATION	TOTAL WATTAGE
		INCAND.	LED		
SIGNAL (RED)	22		17	50	187.00
(YELLOW)	22		25	25	137.50
(GREEN)	22		15	25	82.50
ARROW	0		12	10	0.00
PED. SIGNAL	0		25	100	0.00
CONTROLLER	1		100	100	100.00
ILLUM. SIGN	0		25	5	0.00
VIDEO SYSTEM	1	150		100	150.00
FLASHER	0		25	50	0.00
TOTAL =					657.00

CABLE PLAN
NOT TO SCALE

ENERGY COSTS TO:
 ILLINOIS DEPARTMENT OF TRANSPORTATION
 201 WEST CENTER COURT
 SCHAUMBURG, ILLINOIS 60196-1096
 ENERGY SUPPLY CONTACT: MARK GLOECKLE
 PHONE: (630) 691-4529
 COMPANY: COMED

REVISIONS		ILLINOIS DEPARTMENT OF TRANSPORTATION IL RTE 64 & POWIS ROAD TEMPORARY CABLE PLAN & TEMPORARY PHASE DESIGNATION DIAGRAM & SCHEDULE OF QUANTITIES STAGE 2
NAME	DATE	
ADDENDUM NO. 1	12/23/11	

SCALE: NONE
 DATE: NOVEMBER 1, 2011
 DRAWN BY: JS
 DESIGN BY: JS
 CHECKED BY: WP