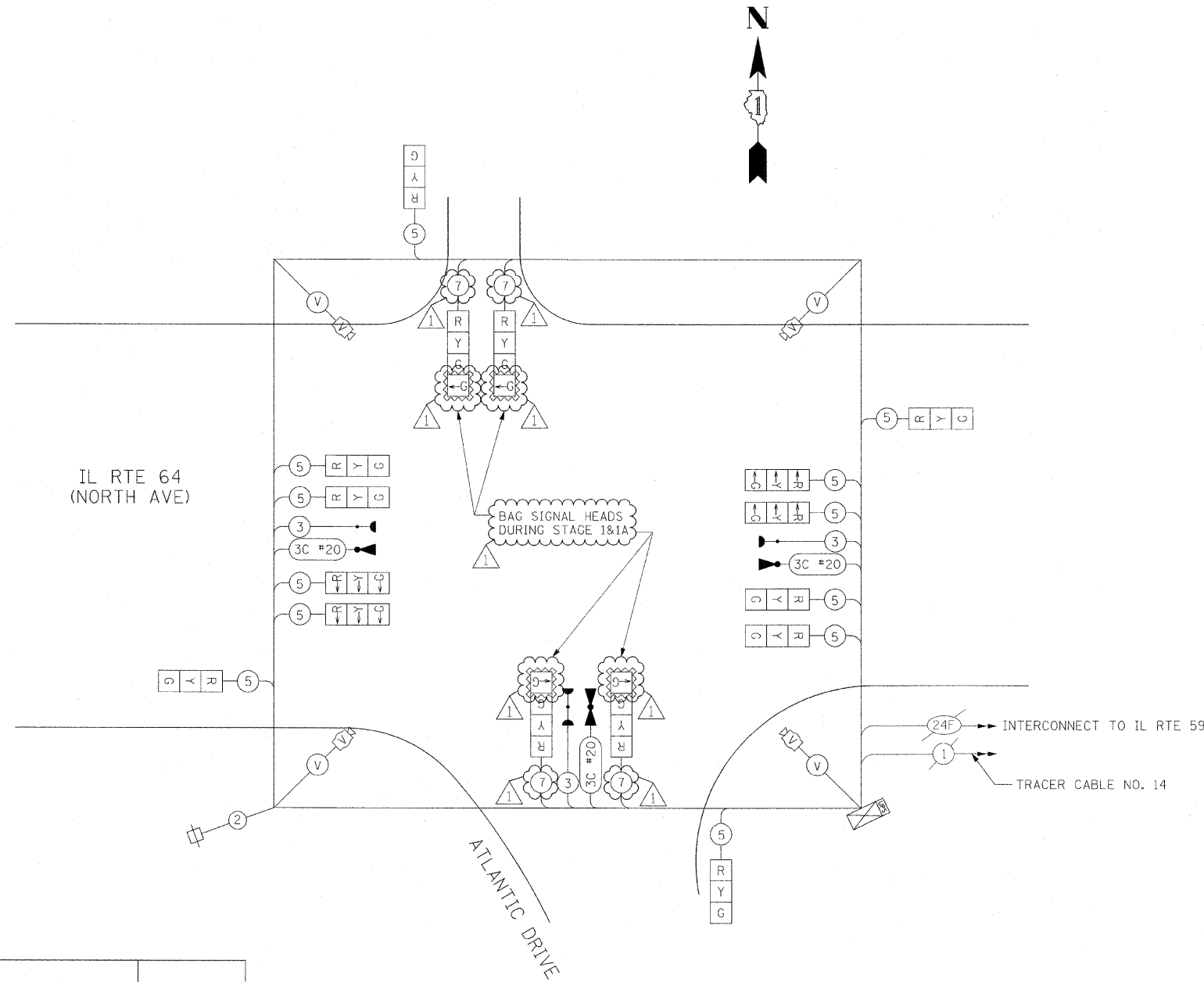
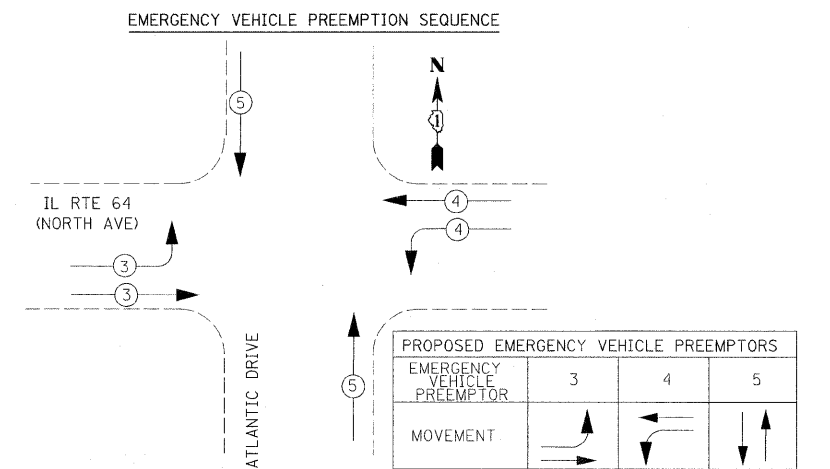
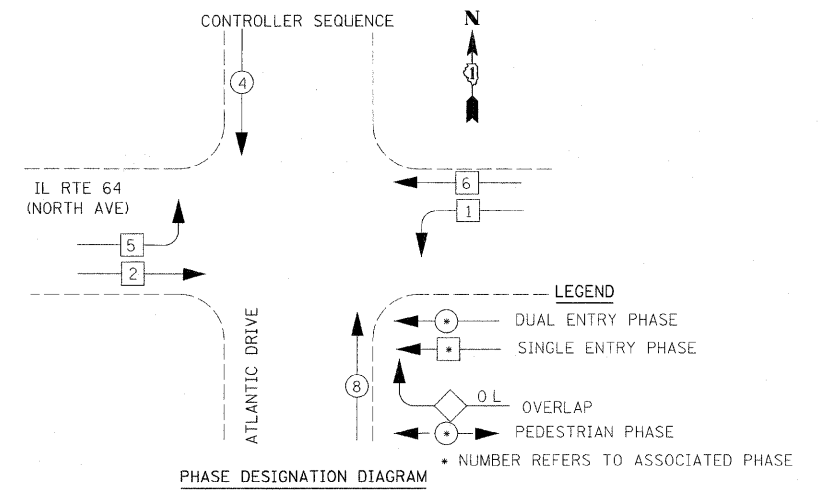


F.A.P. RTE.	SECTION	COUNTY	TOTAL SHEETS	SHEET NO.
307	130 R-2	DUPAGE, KANE	647	378A
STA.		TO STA.		
FED. ROAD DIST. NO.		ILLINOIS FED. AID PROJECT		

62410



**CABLE PLAN**  
NOT TO SCALE



I.D.O.T TRAFFIC SIGNAL INSTALLATION ELECTRICAL SERVICE REQUIREMENTS					TOTAL WATTAGE
TYPE	NO. LAMPS	WATTAGE		% OPERATION	
		INCAND.	LED		
SIGNAL (RED)	16		17	50	136.00
(YELLOW)	16		25	25	100.00
(GREEN)	16		15	25	60.00
ARROW	4		12	10	4.80
PED. SIGNAL	0		25	100	0.00
CONTROLLER	1		100	100	100.00
ILLUM. SIGN	0		25	5	0.00
VIDEO SYSTEM	1	150		100	150.00
FLASHER				50	
TOTAL =					550.80

ENERGY COSTS TO:  
 ILLINOIS DEPARTMENT OF TRANSPORTATION  
 201 WEST CENTER COURT  
 SCHAUMBURG, ILLINOIS 60196-1096

ENERGY SUPPLY CONTACT: MARK GLOECKLE  
 PHONE: (630) 691-4529  
 COMPANY: COMED

REVISIONS		ILLINOIS DEPARTMENT OF TRANSPORTATION IL RTE 64 & ATLANTIC DRIVE TEMPORARY CABLE PLAN & TEMPORARY PHASE DESIGNATION DIAGRAM & SCHEDULE OF QUANTITIES STAGES 1 & 1A
NAME	DATE	
ADDENDUM NO. 1	12/23/11	

SCALE: NONE  
 DATE: NOVEMBER 1, 2011

DRAWN BY: JS  
 DESIGN BY: JS  
 CHECKED BY: WP