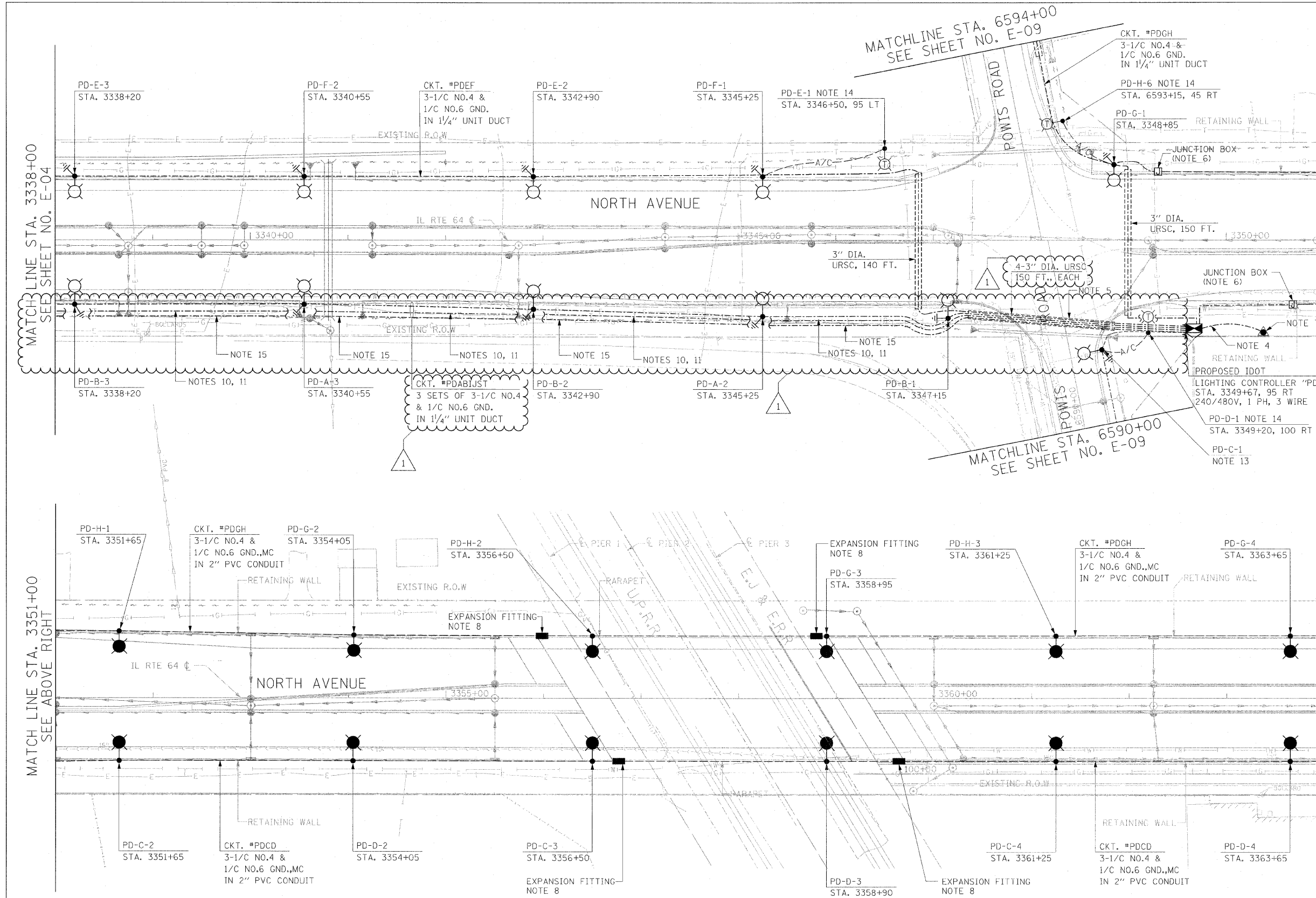


F.A.P. RTE.	SECTION	COUNTY	TOTAL SHEETS	SHEET NO.
307	130 R-2	DUPAGE, KANE	647	419
STA.	TO STA.			
FED. ROAD DIST. NO.	ILLINOIS FED. AID PROJECT		62410	

- NOTES:**
- SEE SHEET E-01 FOR ELECTRICAL SYMBOLS, CALL-OUT SAMPLES, ABBREVIATIONS AND GENERAL NOTES.
 - NOT USED
 - NOT USED
 - PROVIDE 3-350 KCMIL TYPE USE IN 4" URSC FROM THE UTILITY POLE TO THE LIGHTING CONTROLLER CABINET. CONTRACTOR SHALL COORDINATE ALL WORK WITH COMED.
 - INSTALL ONE 1/4" UNIT DUCT PER URSC UNDER ROADWAY.
 - PROVIDE AN 18"X8"X8" NON-METALLIC JUNCTION BOX EMBEDDED IN RETAINING WALL TO TRANSITION FROM UNIT DUCT IN TRENCH TO CONDUIT EMBEDDED IN RETAINING WALL. SEE DRAWING E-17 FOR DETAILS.
 - PROPOSED COMED UTILITY POLE.
 - PROVIDE AX/DX TYPE EXPANSION FITTINGS AT LOCATIONS NOTED. IN ADDITION PROVIDE DX TYPE DEFLECTION FITTINGS AT ALL 1/2" CORK FILLED EXPANSION JOINTS IN RETAINING WALL PARAPET. SEE STRUCTURAL DRAWINGS FOR LOCATION OF EXPANSION AND CONSTRUCTION JOINTS.
 - THE TYPICAL LIGHT POLE SETBACK SHALL BE 15 FEET FROM EDGE OF PAVEMENT TO THE FACE OF LIGHT POLE.
 - 3#4 & 1#6 GND. IN 1/4" UNIT DUCT FOR AVIATION OBSTRUCTION WARNING LUMINAIRE.
 - THE UNIT DUCT FOR AVIATION OBSTRUCTION WARNING LUMINAIRE SHALL SWEEP AROUND THE LIGHT POLE FOUNDATION.
 - IN LIGHTING CONTROLLER "PD" PROVIDE TWO 30 AMP, 1 POLE CIRCUIT BREAKERS FOR AVIATION OBSTRUCTION WARNING LUMINAIRE. THE BREAKERS MUST BE INSTALLED ON LINE SIDE OF MAIN BREAKER FOR CONTINUOUS OPERATION. SEE NOTE 2 ON SHEET E-14.
 - LIGHT POLE SETBACK SHALL BE 3 FEET FROM BACK OF CURB TO FACE OF LIGHT POLE.
 - TEMPORARY LIGHTING UNIT CONSISTING OF 60 FT. WOOD POLE, 15 FT. MAST ARM, 47.5 FOOT MOUNTING HEIGHT, AND 400 WATT, 240 VOLT HPS LUMINAIRE. SEE SHEET TL-03.
 - THE UNIT DUCT FOR THE MEDIAN LIGHTING CIRCUITS SHALL SWEEP AROUND THE LIGHT POLE FOUNDATION.

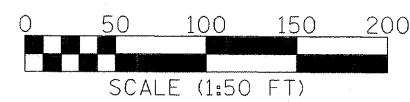


MATCH LINE STA. 3351+00
 SEE ABOVE RIGHT

MATCH LINE STA. 3364+00
 SEE SHEET NO. E-06

MATCHLINE STA. 6594+00
 SEE SHEET NO. E-09

MATCHLINE STA. 6590+00
 SEE SHEET NO. E-09



REVISIONS	
NAME	DATE
ADDENDUM NO. 1	12/23/11

ILLINOIS DEPARTMENT OF TRANSPORTATION
 F.A.P. ROUTE 307 (ILLINOIS ROUTE 64)

ROADWAY LIGHTING PLAN
 STA. 3338+00 TO STA. 3364+00

SCALE: 1" = 50'
 DATE: NOVEMBER 1, 2011

DRAWN BY: HR
 CHECKED BY: JPC