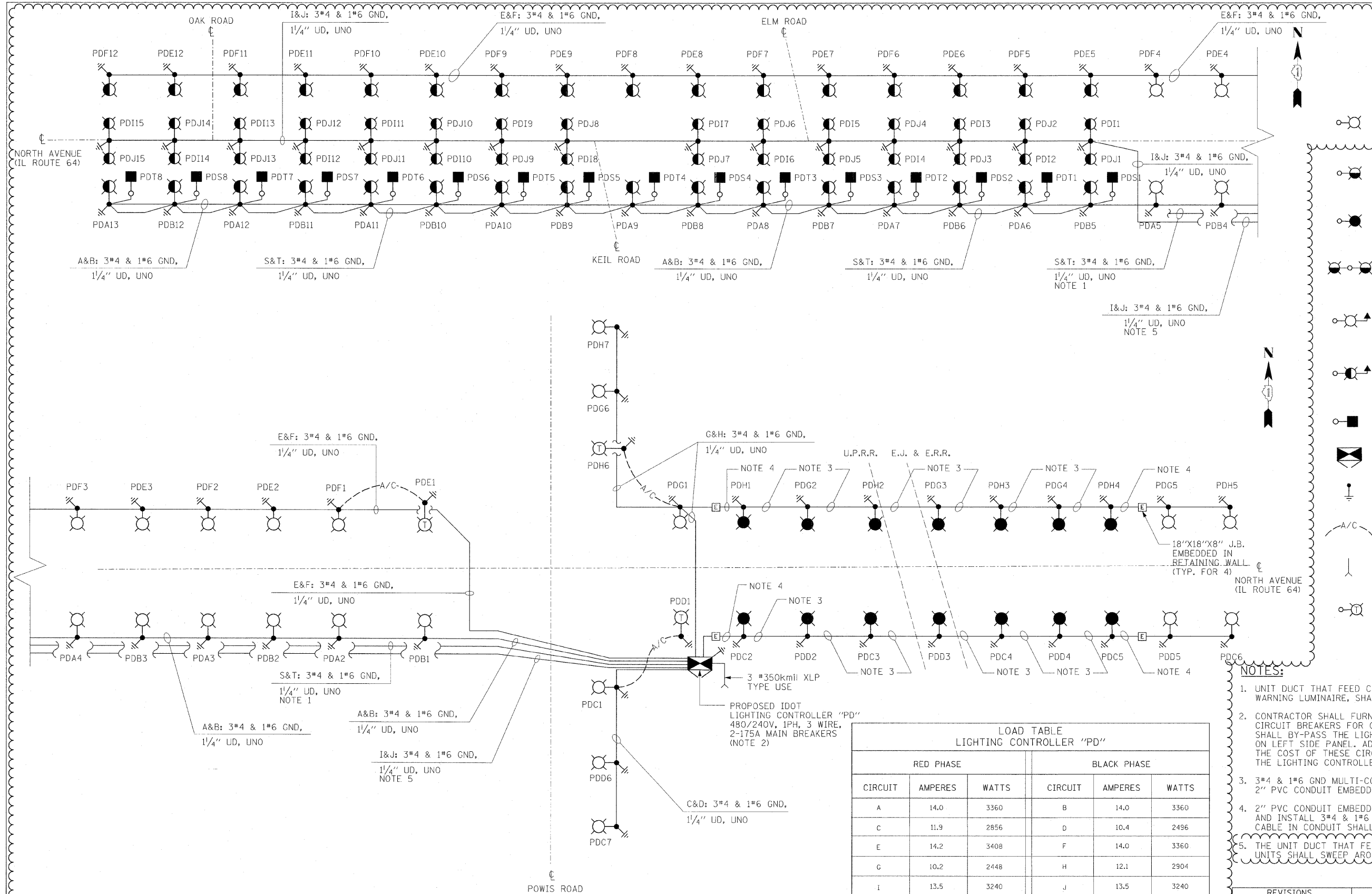


F.A.P. RTE.	SECTION	COUNTY	TOTAL SHEETS	SHEET NO.
307	130 R-2	DUPAGE, KANE	647	428
STA.	TO STA.			
FED. ROAD DIST. NO.	ILLINOIS FED. AID PROJECT			
	62410			



- LEGEND**
- LIGHTING UNIT:  
47.5 FT. M.H., 15 FT. M.A.,  
310W HPS M-C-III LUMINAIRE,  
9" BREAKAWAY TRANSFORMER BASE
  - LIGHTING UNIT:  
20 FT. M.H., 6 FT. M.A.,  
150W HPS M-C-III LUMINAIRE,  
9" BREAKAWAY TRANSFORMER BASE
  - PARAPET WALL LIGHTING UNIT:  
45 FT. M.H., 15 FT. M.A.,  
310W HPS M-C-III LUMINAIRE
  - TWIN LIGHTING UNIT:  
20 FT. M.H., TWIN 6 FT. M.A.,  
150W HPS M-C-III LUMINAIRE,  
9" BREAKAWAY TRANSFORMER BASE
  - COMBINATION TRAFFIC SIGNAL AND  
LUMINAIRE LIGHTING UNIT:  
45 FT. M.H., 15 FT. M.A.,  
400W HPS M-C-III LUMINAIRE
  - COMBINATION TRAFFIC SIGNAL AND  
LUMINAIRE LIGHTING UNIT:  
45 FT. M.H., 15 FT. M.A.,  
310W HPS M-C-III LUMINAIRE
  - AVIATION OBSTRUCTION  
WARNING LUMINAIRE
  - LIGHTING CONTROLLER CABINET
  - GROUND ROD
  - AERIAL CABLE, 3-1/C #4  
WITH MESSENGER WIRE,  
UNLESS OTHERWISE NOTED
  - ELECTRIC UTILITY SERVICE
  - TEMPORARY LIGHTING UNIT  
60 FT. WOOD POLE, 15 FT. MAST ARM  
47.5 FOOT MOUNTING HEIGHT  
400 W HPS LUMINAIRE

- NOTES:**
- UNIT DUCT THAT FEED CIRCUITS S AND T, OBSTRUCTION WARNING LUMINAIRE, SHALL SWEEP AROUND POLE FOUNDATION.
  - CONTRACTOR SHALL FURNISH AND INSTALL TWO 30 AMP, 1 POLE, CIRCUIT BREAKERS FOR CIRCUITS S AND T. EACH CIRCUIT BREAKER SHALL BY-PASS THE LIGHTING CONTACTOR. INSTALL CIRCUIT BREAKERS ON LEFT SIDE PANEL. ADJACENT TO AUTO-MANUAL SWITCH (ITEM O) THE COST OF THESE CIRCUIT BREAKERS SHALL BE INCLUDED IN THE LIGHTING CONTROLLER CABINET PAY ITEM.
  - 3\*4 & 1\*6 GND MULTI-CONDUCTOR TYPE TC CABLE IN 2" PVC CONDUIT EMBEDDED IN RETAINING WALL.
  - 2" PVC CONDUIT EMBEDDED IN RETAINING WALL. REMOVE UNIT DUCT AND INSTALL 3\*4 & 1\*6 IN CONDUIT TO FIRST LIGHT POLE ON WALL. CABLE IN CONDUIT SHALL BE PAID AS UNIT DUCT.
  - THE UNIT DUCT THAT FEED CIRCUITS I AND J FOR THE MEDIAN LIGHTING UNITS SHALL SWEEP AROUND POLE FOUNDATION.

**LOAD TABLE  
LIGHTING CONTROLLER "PD"**

CIRCUIT	RED PHASE		BLACK PHASE		
	AMPERES	WATTS	CIRCUIT	AMPERES	WATTS
A	14.0	3360	B	14.0	3360
C	11.9	2856	D	10.4	2496
E	14.2	3408	F	14.0	3360
G	10.2	2448	H	12.1	2904
I	13.5	3240	J	13.5	3240
K	-	-	L	-	-
M	-	-	N	-	-
O	-	-	P	-	-
S	0.2	48	T	0.2	48

TOTAL LOAD=30,768 WATTS

SINGLE LINE DIAGRAM  
LIGHTING CONTROLLER "PD"  
NOT TO SCALE

**REVISIONS**

NAME	DATE
ADDENDUM NO. 1	12/23/11

ILLINOIS DEPARTMENT OF TRANSPORTATION  
 F.A.P. ROUTE 307 (ILLINOIS ROUTE 64)

**SINGLE LINE DIAGRAM  
LIGHTING CONTROLLER "PD"**

SCALE: NONE  
 DATE: NOVEMBER 1, 2011  
 DRAWN BY: HR  
 CHECKED BY: JPC

