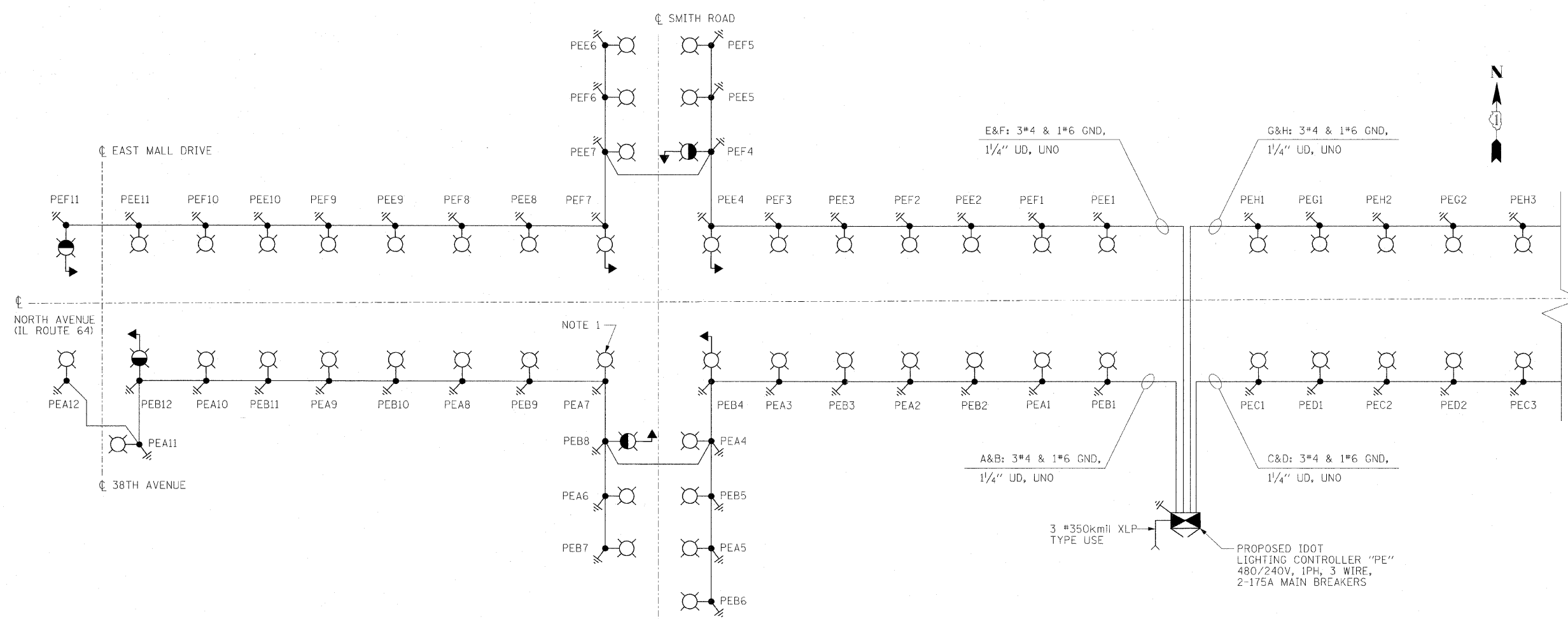


F.A.P. RTE.	SECTION	COUNTY	TOTAL SHEETS	SHEET NO.
307	130 R-2	DUPAGE,KANE	647	429
STA.		TO STA.		
FED. ROAD DIST. NO.	ILLINOIS FED. AID PROJECT		62410	



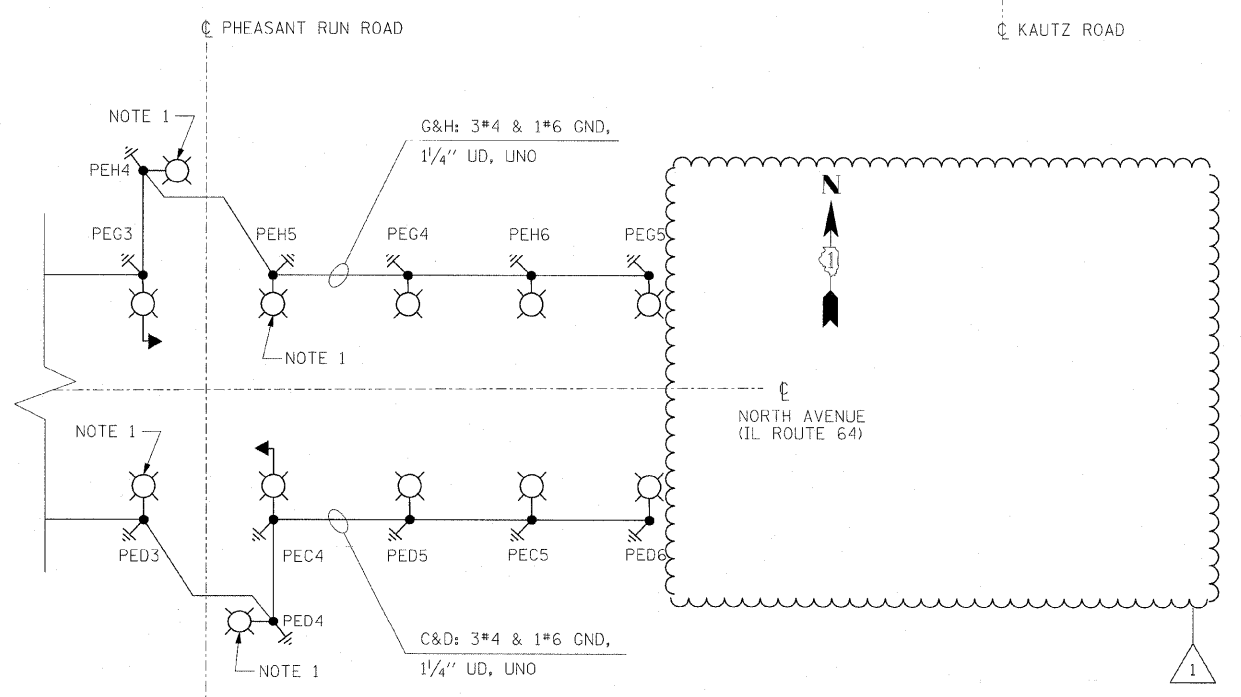
- LEGEND**
- LIGHTING UNIT:  
47.5 FT. M.H., 15 FT. M.A.,  
310W HPS M-C-III LUMINAIRE, UNO,  
9" BREAKAWAY TRANSFORMER BASE
  - COMBINATION TRAFFIC SIGNAL AND  
LUMINAIRE LIGHTING UNIT:  
45 FT. M.H., 15 FT. M.A.,  
400W HPS M-C-III LUMINAIRE
  - COMBINATION TRAFFIC SIGNAL AND  
LUMINAIRE LIGHTING UNIT:  
45 FT. M.H., 15 FT. M.A.,  
310W HPS M-C-III LUMINAIRE
  - LIGHTING CONTROLLER CABINET
  - ⊥ GROUND ROD
  - ⊥ ELECTRIC UTILITY SERVICE

**NOTES**  
 1. LUMINAIRE SHALL BE 400W HPS.

**SINGLE LINE DIAGRAM  
 LIGHTING CONTROLLER "PE"**  
 NOT TO SCALE

**LOAD TABLE  
 LIGHTING CONTROLLER "PE"**

RED PHASE			BLACK PHASE		
CIRCUIT	AMPERES	WATTS	CIRCUIT	AMPERES	WATTS
A	20.6	4944	B	20.6	4944
C	8.7	2088	D	10.6	2544
E	18.9	4536	F	18.9	4536
G	8.7	2088	H	10.6	2544
I	-	-	J	-	-
K	-	-	L	-	-
M	-	-	N	-	-
O	-	-	P	-	-
TOTAL LOAD=28,224 WATTS					



**REVISIONS**

NAME	DATE
ADDENDUM NO. 1	12/23/11

ILLINOIS DEPARTMENT OF TRANSPORTATION  
 F.A.P. ROUTE 307 (ILLINOIS ROUTE 64)

**SINGLE LINE DIAGRAM  
 LIGHTING CONTROLLER "PE"**

SCALE: NONE  
 DATE: NOVEMBER 1, 2011

DRAWN BY: HR  
 CHECKED BY: JPC