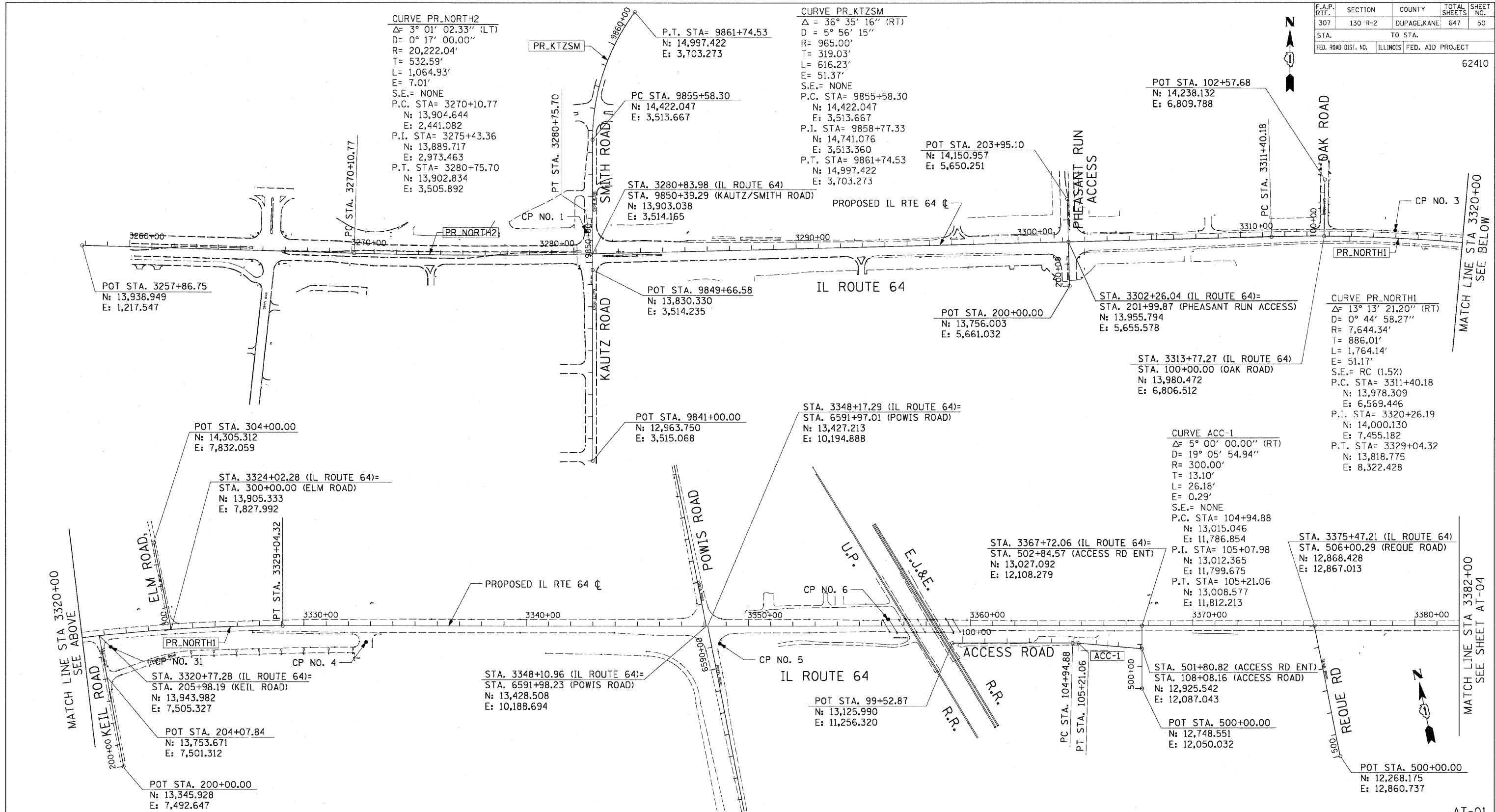


F.A.P. RTE.	SECTION	COUNTY	TOTAL SHEETS	SHEET NO.
307	130 R-2	DUPAGE, KANE	647	50
STA. TO STA.		ILLINOIS FED. AID PROJECT		
FED. ROAD DIST. NO.		62410		

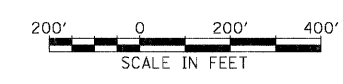


CURVE PR_NORTH2
 $\Delta = 3^\circ 01' 02.33''$ (LT)
 D = 0° 17' 00.00"
 R = 20,222.04'
 T = 532.59'
 L = 1,064.93'
 E = 7.01'
 S.E. = NONE
 P.C. STA = 3270+10.77
 N: 13,904.644
 E: 2,441.082
 P.I. STA = 3275+43.36
 N: 13,889.717
 E: 2,973.463
 P.T. STA = 3280+75.70
 N: 13,902.834
 E: 3,505.892

CURVE PR_KTZSM
 $\Delta = 36^\circ 35' 16''$ (RT)
 D = 5° 56' 15"
 R = 965.00'
 T = 319.03'
 L = 616.23'
 E = 51.37'
 S.E. = NONE
 P.C. STA = 9855+58.30
 N: 14,422.047
 E: 3,513.667
 P.I. STA = 9858+77.33
 N: 14,741.076
 E: 3,513.360
 P.T. STA = 9861+74.53
 N: 14,997.422
 E: 3,703.273

CURVE PR_NORTH1
 $\Delta = 13^\circ 13' 21.20''$ (RT)
 D = 0° 44' 58.27"
 R = 7,644.34'
 T = 886.01'
 L = 1,764.14'
 E = 51.17'
 S.E. = RC (1.5%)
 P.C. STA = 3311+40.18
 N: 13,978.309
 E: 6,569.446
 P.I. STA = 3320+26.19
 N: 14,000.130
 E: 7,455.182
 P.T. STA = 3329+04.32
 N: 13,818.775
 E: 8,322.428

CURVE ACC-1
 $\Delta = 5^\circ 00' 00.00''$ (RT)
 D = 19° 05' 54.94"
 R = 300.00'
 T = 13.10'
 L = 26.18'
 E = 0.29'
 S.E. = NONE
 P.C. STA = 104+94.88
 N: 13,015.046
 E: 11,786.854
 P.I. STA = 105+07.98
 N: 13,012.365
 E: 11,799.675
 P.T. STA = 105+21.06
 N: 13,008.577
 E: 11,812.213



REVISIONS	
NAME	DATE

ILLINOIS DEPARTMENT OF TRANSPORTATION
 F.A.P. ROUTE 307 (ILLINOIS ROUTE 64)

ALIGNMENT, TIES AND CONTROL POINTS

SCALE: VERT: 1"=200'
 HORIZ: 1"=200'
 DATE: MAY 13, 2011

DRAWN BY: JWM
 CHECKED BY: RMG

AT-01