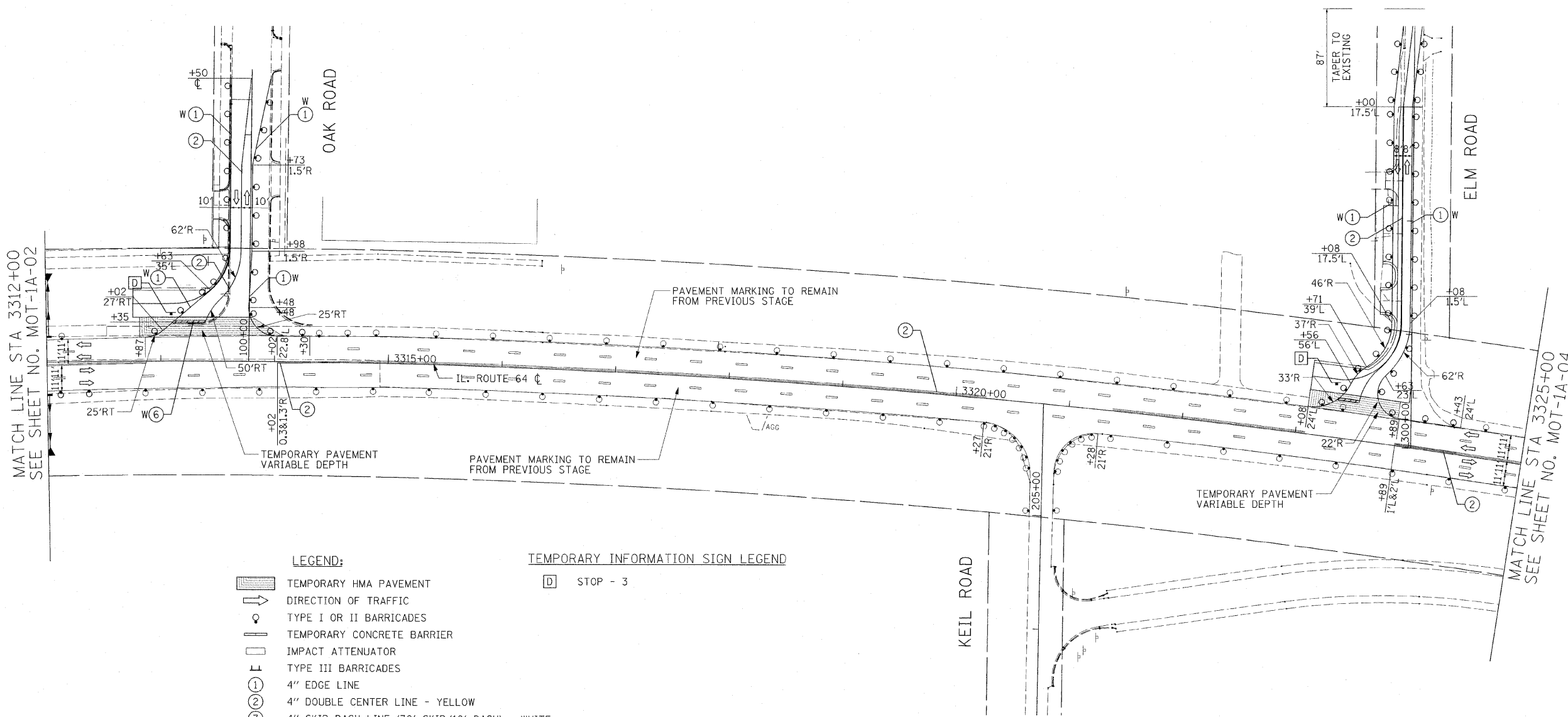


F.A.P. RTE.	SECTION	COUNTY	TOTAL SHEETS	SHEET NO.
307	130 R-2	DUPAGE, KANE	647	119
STA.		TO STA.		
FED. ROAD DIST. NO.		ILLINOIS FED. AID PROJECT		

62410



LEGEND: **TEMPORARY INFORMATION SIGN LEGEND**

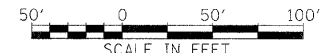
- TEMPORARY HMA PAVEMENT
- DIRECTION OF TRAFFIC
- TYPE I OR II BARRICADES
- TEMPORARY CONCRETE BARRIER
- IMPACT ATTENUATOR
- TYPE III BARRICADES
- 4" EDGE LINE
- 4" DOUBLE CENTER LINE - YELLOW
- 4" SKIP DASH LINE (30' SKIP/10' DASH) - WHITE
- 4" SKIP DASH LINE (6' SKIP/2' DASH) - WHITE
- 6" LANE LINE - WHITE
- 24" STOP BAR - WHITE
- LETTERS AND SYMBOLS

STOP - 3

- NOTES:**
- ALL APPLICABLE STATE STANDARDS SHALL BE APPLIED AT ALL CROSS STREETS AND AT THE PROJECT LIMITS.
 - ALL TEMPORARY INFORMATION SIGNS ALONG NORTH AVENUE SHALL REMAIN FROM THE PREVIOUS STAGE. ALL SIGNS REMOVED SHALL BE VERIFIED BY THE ENGINEER.
 - MUST MAINTAIN ACCESS TO DUPAGE AIRPORT AT ALL TIMES.



12/2



REVISIONS	
NAME	DATE

MOT-1A-03

ILLINOIS DEPARTMENT OF TRANSPORTATION
 F.A.P. ROUTE 307 (ILLINOIS ROUTE 64)

SUGGESTED STAGES OF CONSTRUCTION AND TRAFFIC CONTROL
 STAGE 1A

SCALE: VERT: NONE
 HORIZ: 1"=50'
 DATE: DECEMBER 2, 2011

DRAWN BY: AFC
 CHECKED BY: NJH