

F.A.P. RTE.	SECTION	COUNTY	TOTAL SHEETS	SHEET NO.
307	130 R-2	DUPAGE, KANE	647	158
STA. 3351+00		TO STA. 3377+00		
FED. ROAD DIST. NO.		ILLINOIS FED. AID PROJECT		

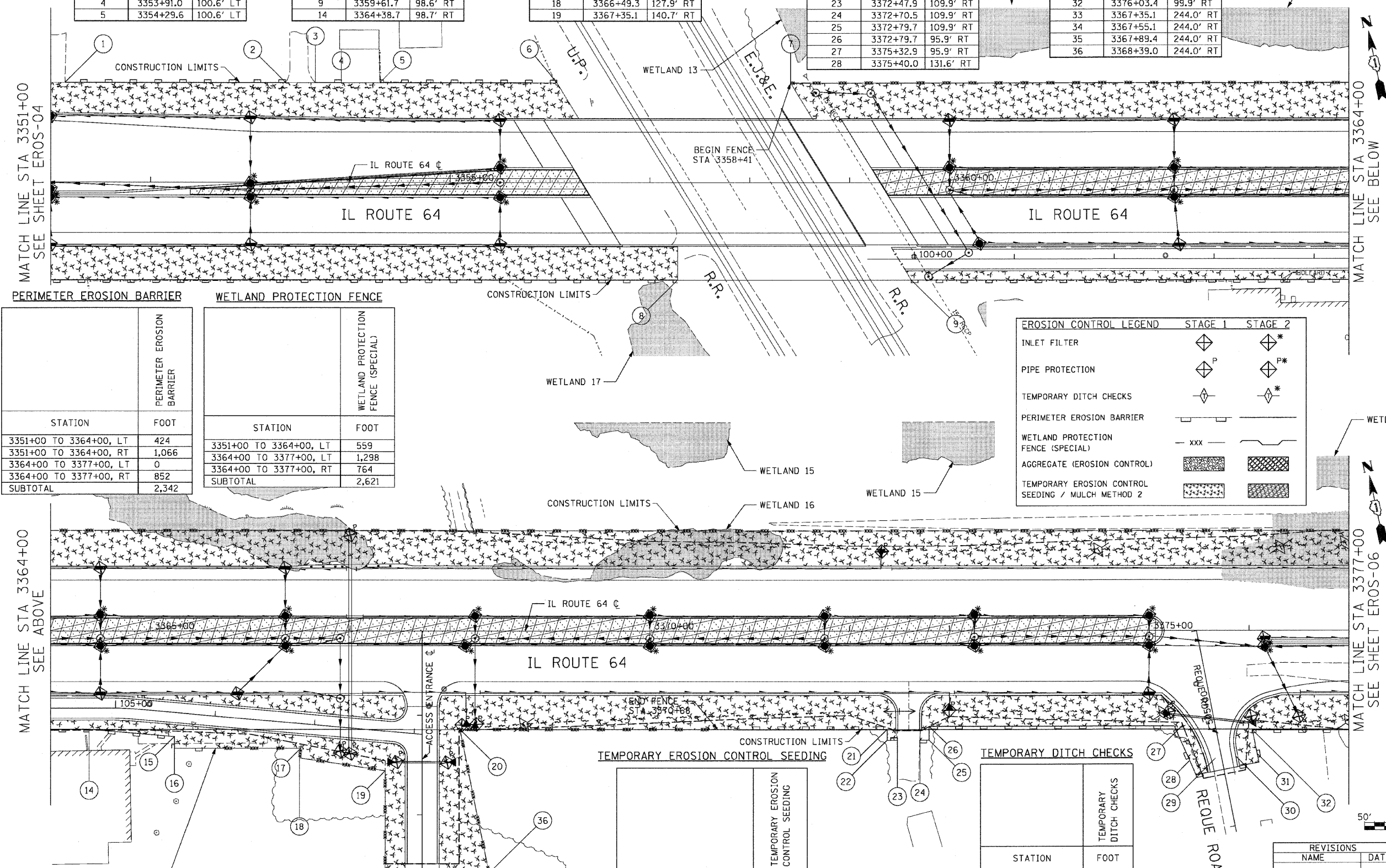
62410

PERIMETER BARRIER LOCATIONS PERIMETER BARRIER LOCATIONS CONT. PERIMETER BARRIER LOCATIONS CONT. PERIMETER BARRIER LOCATIONS CONT. PERIMETER BARRIER LOCATIONS CONT.

POINT	STATION	OFFSET	POINT	STATION	OFFSET	POINT	STATION	OFFSET	POINT	STATION	OFFSET	POINT	STATION	OFFSET
1	3351+14.3	100.7' LT	6	3356+07.0	100.5' LT	15	3365+24.1	106.1' RT	20	3368+09.8	98.8' RT	29	3375+66.3	128.6' RT
2	3353+35.1	100.6' LT	7	3358+41.0	100.5' LT	16	3365+24.1	118.0' RT	21	3372+37.7	98.9' RT	30	3375+86.5	126.3' RT
3	3353+65.0	100.6' LT	8	3357+27.7	98.5' RT	17	3366+50.7	118.0' RT	22	3372+37.7	109.9' RT	31	3376+08.2	123.9' RT
4	3353+91.0	100.6' LT	9	3359+61.7	98.6' RT	18	3366+49.3	127.9' RT	23	3372+47.9	109.9' RT	32	3376+03.4	99.9' RT
5	3354+29.6	100.6' LT	14	3364+38.7	98.7' RT	19	3367+35.1	140.7' RT	24	3372+70.5	109.9' RT	33	3367+35.1	244.0' RT
									25	3372+79.7	109.9' RT	34	3367+55.1	244.0' RT
									26	3372+79.7	95.9' RT	35	3367+89.4	244.0' RT
									27	3375+32.9	95.9' RT	36	3368+39.0	244.0' RT
									28	3375+40.0	131.6' RT			

MATCH LINE STA 3351+00
SEE SHEET EROS-04

MATCH LINE STA 3364+00
SEE BELOW



PERIMETER EROSION BARRIER

WETLAND PROTECTION FENCE

STATION	FOOT
3351+00 TO 3364+00, LT	424
3351+00 TO 3364+00, RT	1,066
3364+00 TO 3377+00, LT	0
3364+00 TO 3377+00, RT	852
SUBTOTAL	2,342

STATION	FOOT
3351+00 TO 3364+00, LT	559
3364+00 TO 3377+00, LT	1,298
3364+00 TO 3377+00, RT	764
SUBTOTAL	2,621

EROSION CONTROL LEGEND	STAGE 1	STAGE 2
INLET FILTER		
PIPE PROTECTION		
TEMPORARY DITCH CHECKS		
PERIMETER EROSION BARRIER		
WETLAND PROTECTION FENCE (SPECIAL)		
AGGREGATE (EROSION CONTROL)		
TEMPORARY EROSION CONTROL SEEDING / MULCH METHOD 2		

MATCH LINE STA 3364+00
SEE ABOVE

MATCH LINE STA 3377+00
SEE SHEET EROS-06

TEMPORARY EROSION CONTROL SEEDING

STATION	POUND
3351+00 TO 3364+00, LT	514
3351+00 TO 3364+00, RT	595
3364+00 TO 3377+00, LT	627
3364+00 TO 3377+00, RT	1,004
SUBTOTAL	2,740

TEMPORARY DITCH CHECKS

STATION	FOOT
3374+50, 81' LT	10
3376+32, 84' LT	10
3376+97, 88' LT	10
3368+75, 93' RT	10
3375+15, 82' RT	10
3377+01, 91' RT	10
SUBTOTAL	60



SCALE IN FEET EROS-05

REVISIONS	
NAME	DATE

ILLINOIS DEPARTMENT OF TRANSPORTATION
F.A.P. ROUTE 307 (ILLINOIS ROUTE 64)

EROSION CONTROL PLAN
IL ROUTE 64
STA. 3351+00 TO STA. 3377+00

SCALE: VERT: NONE
HORIZ: 1"=50'
DATE: NOVEMBER 1, 2011
DRAWN BY: AFC
CHECKED BY: NJH



INLET AND PIPE PROTECTION

STATION	DESCRIPTION	INLET AND PIPE PROTECTION
3353+00, 1' RT	CB	1
3353+00, 15' RT	CB	1
3353+00, 63' RT	IN	1
3353+00, 66' LT	IN	1
3355+50, 15' LT	CB	1
3355+50, 15' RT	CB	1
3355+50, 63' LT	IN	1
3355+50, 63' RT	IN	1
3360+00, 15' LT	CB	1
3360+00, 63' LT	IN	1
3360+30, 63' RT	CB	1
3362+25, 15' LT	CB	1
3362+25, 15' RT	CB	1
3362+25, 63' LT	IN	1
3362+30, 63' RT	IN	1
3364+50, 15' LT	IN	1
3364+50, 15' RT	CB	1
3364+50, 63' LT	IN	1
3364+50, 63' RT	IN	1
3365+87, 63' RT	IN	1
3366+35, 15' LT	CB	1
3366+35, 15' RT	CB	1
3366+35, 63' LT	IN	1
3366+90, 121' RT	FES	1
3367+00, 124' RT	FES	1
3367+00, 96' LT	FES	1
3367+46, 132' RT	FES	1
3367+97, 132' RT	FES	1
3368+15, 15' RT	CB	1
3368+25, 15' LT	CB	1
3368+25, 94' RT	FES	1
3370+00, 15' LT	CB	1
3370+00, 15' RT	CB	1
3371+75, 15' LT	CB	1
3371+75, 15' RT	CB	1
3373+25, 15' LT	CB	1
3373+25, 15' RT	CB	1
3375+00, 15' LT	CB	1
3375+00, 15' RT	CB	1
3375+00, 63' RT	IN	1
3375+20, 82' RT	FES	1
3376+02, 86' RT	FES	1
3376+15, 15' RT	FES	1
3376+15, 7' RT	CB	1
3376+50, 86' RT	FES	1