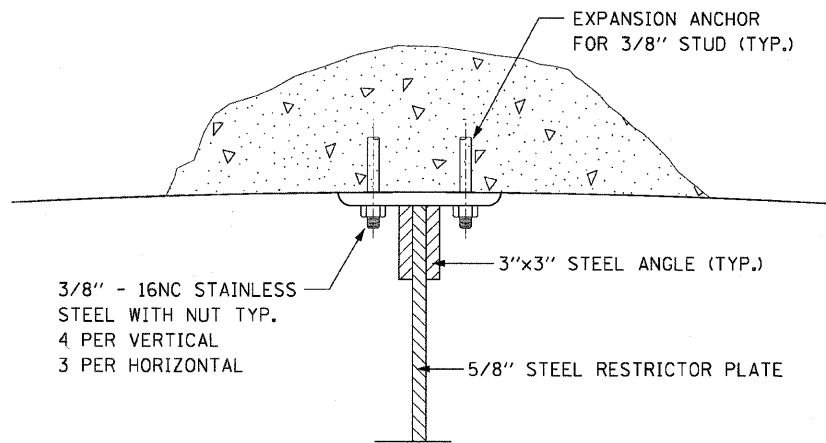


F.A.P. RTE.	SECTION	COUNTY	TOTAL SHEETS	SHEET NO.
307	130 R-2	DUPAGE, KANE	647	190
STA.		TO STA.		
FED. ROAD DIST. NO.		ILLINOIS FED. AID PROJECT		

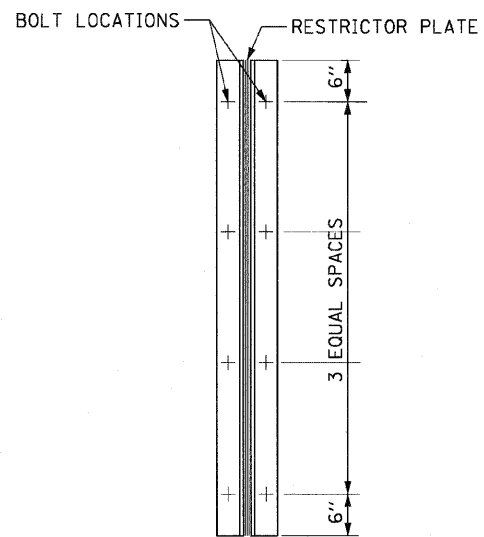
62410



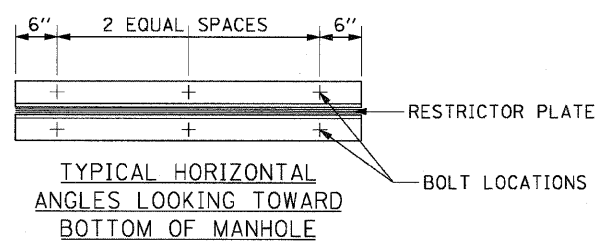
**ANGLE FASTENER DETAIL**

**NOTES:**

1. ALL STEEL ANGLES AND PLATE TO BE GALVANIZED AFTER FABRICATION.
2. ALL RESTRICTOR PLATES, ANGLES AND HARDWARE TO BE INCLUDED IN THE COST OF THE MANHOLE.



**TYPICAL VERTICAL ANGLES LOOKING TOWARD MANHOLE WALL**

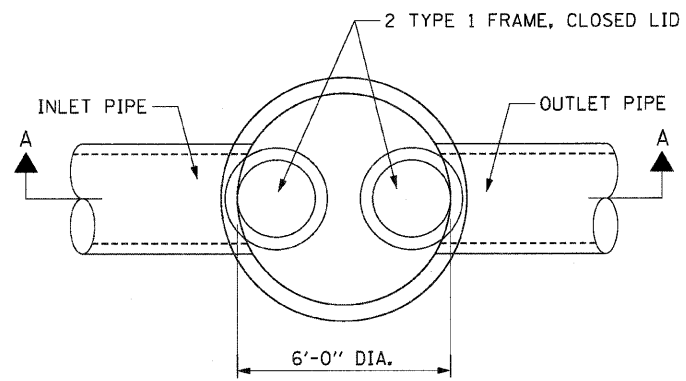


**STEEL ANGLE BOLTING DETAILS**

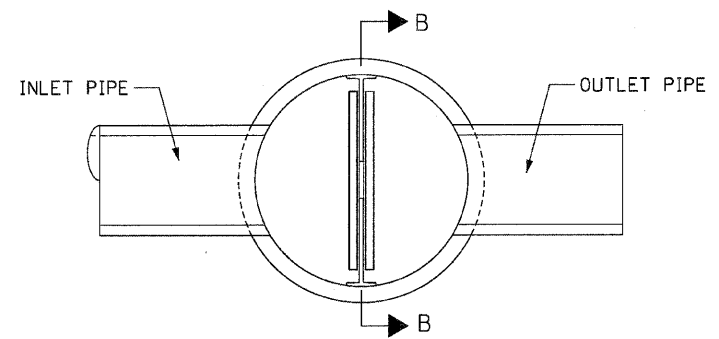
TOTAL BOLTS REQUIRED: 22

**NOTES:**

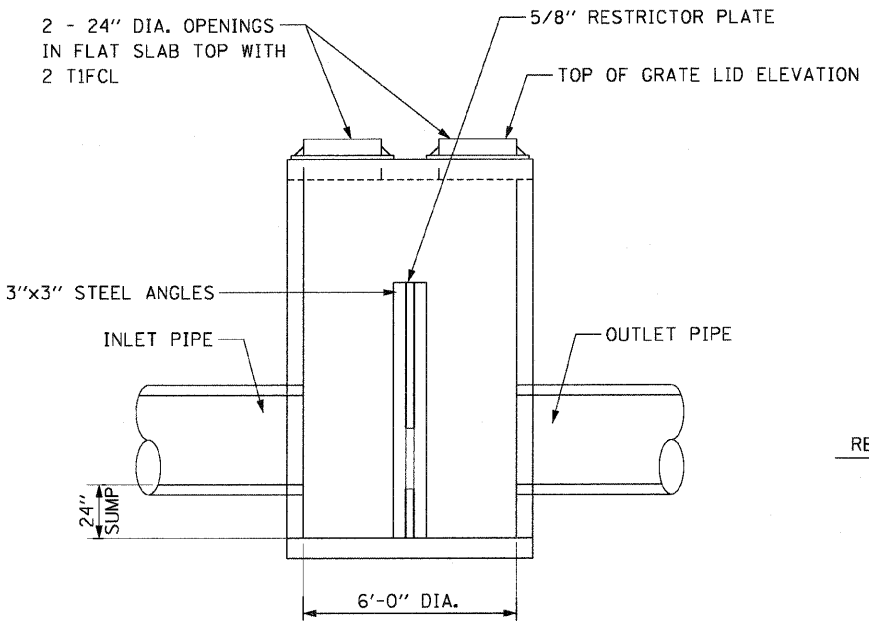
1. ANGLES SHOULD BE 3"x3"x3/4"
2. VERTICAL ANGLES SHOULD EXTEND FROM THE BOTTOM OF THE RESTRICTOR PLATE TO THE TOP.
3. HORIZONTAL ANGLES SHOULD EXTEND FROM VERTICAL ANGLE TO VERTICAL ANGLE.



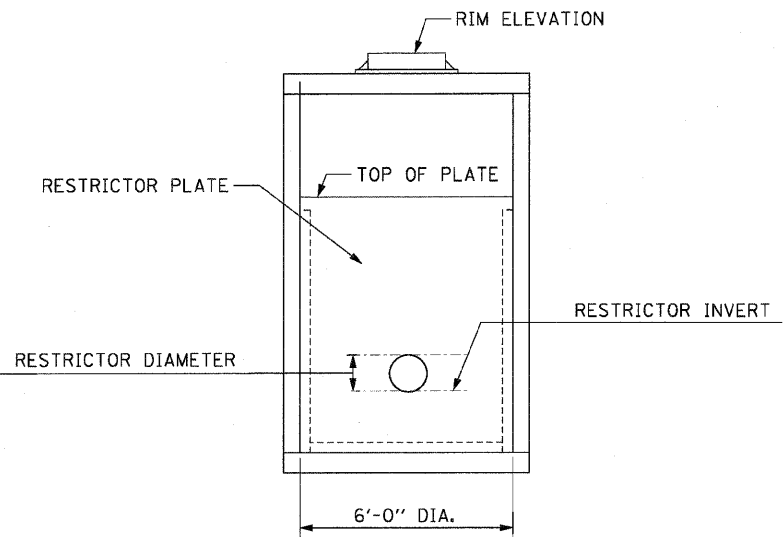
**PLAN**



**PLAN**



**SECTION A-A**



**SECTION B-B**

THIS WORK WILL BE PAID FOR AT THE CONTRACT UNIT PRICE PER EACH FOR:  
 MANHOLES, TYPE A, 6'-DIAMETER, WITH 2 TYPE 1 FRAME, CLOSED LID, RESTRICTOR PLATE

STR. NO.	STATION	OFFSET	RESTRICTOR DIAMETER (INCHES)	RESTRICTOR INVERT	TOP OF PLATE ELEVATION	RIM ELEVATION
RST 1	9849+26	36.6' LT	27	757.50	761.50	764.15
RST 2	3288+00	55' RT	15	758.00	760.00	762.01
RST 3	3313+25	54' RT	18	753.50	756.50	758.76
RST 4	3338+75	53' LT	18	751.56	753.68	755.18
RST 5	3342+75	52' LT	24	752.04	754.40	755.90
RST 6	3366+90	68' RT	21	755.67	763.00	766.12
RST 7	3378+00	58' RT	21	752.37	756.00	759.34
RST 8	3409+50	55' RT	21	770.04	773.00	775.93

DRND-1

REVISIONS	
NAME	DATE

ILLINOIS DEPARTMENT OF TRANSPORTATION  
 F.A.P. ROUTE 307 (ILLINOIS ROUTE 64)

**DRAINAGE DETAILS -  
 MANHOLE WITH  
 RESTRICTOR PLATE**

SCALE: NONE  
 DATE: MAY 13, 2011

DRAWN BY: AFC  
 CHECKED BY: EGY

