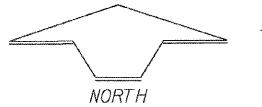
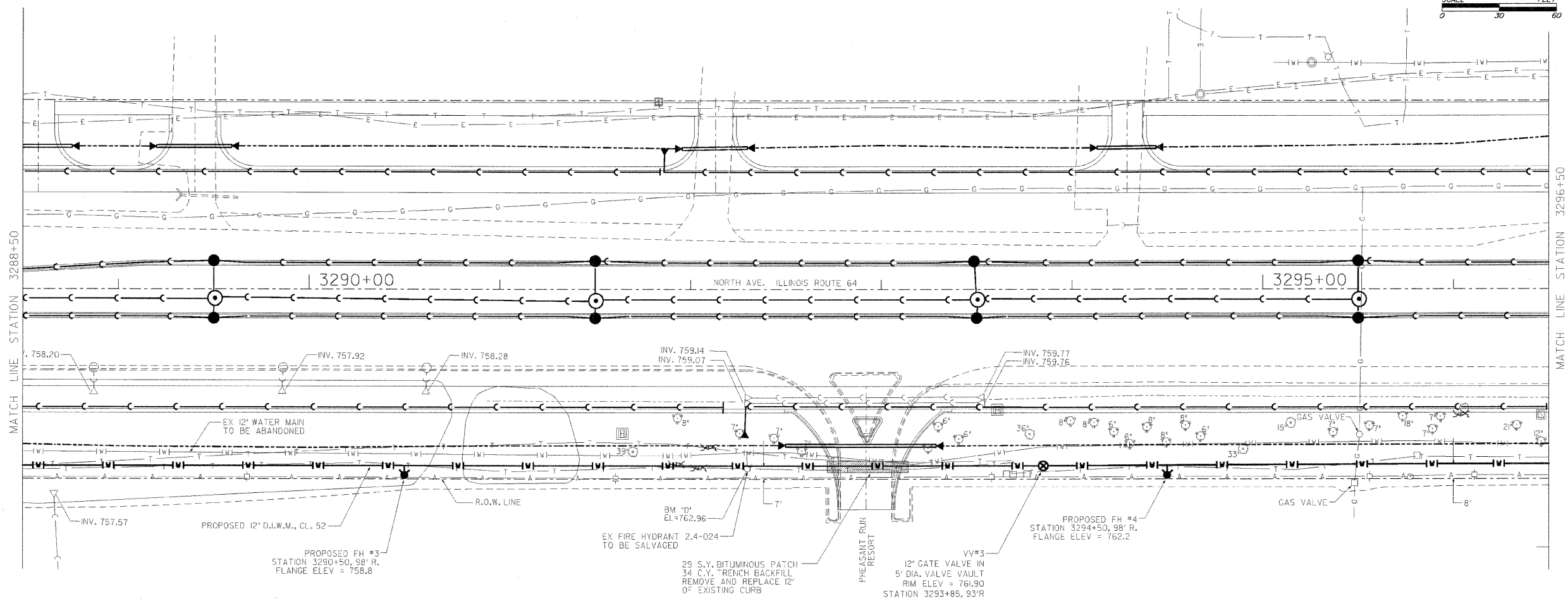


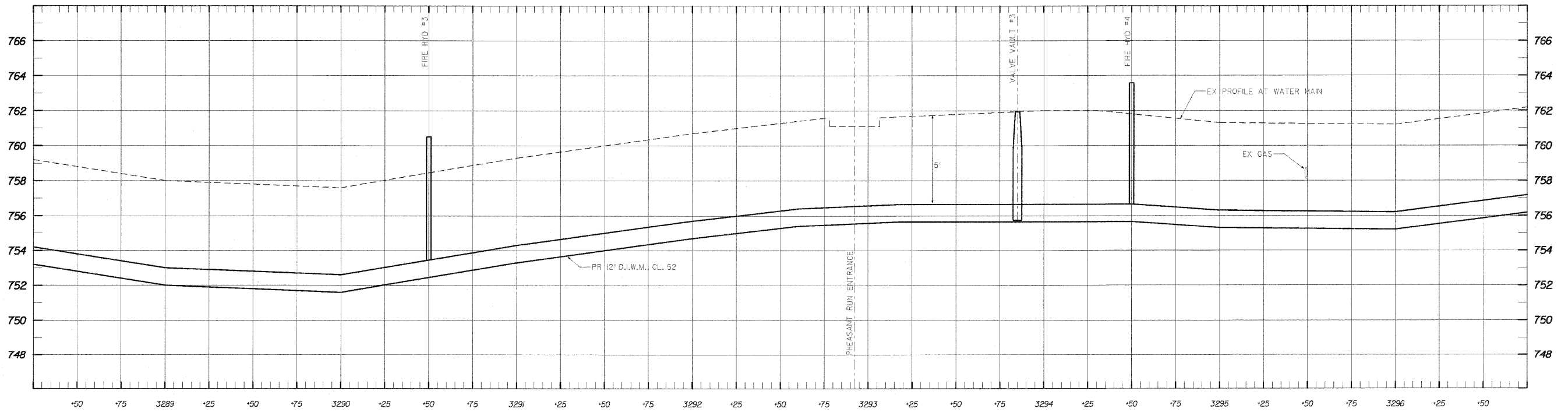
SCALE 0 30 60 FEET



SCALE:
Plan: 1"=30'
Profile: Horz. 1"=30'
Vert. 1"=3'

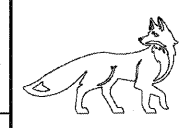


NOTE: CONTRACTOR MUST COORDINATE DRIVEWAY CLOSURE WITH PHEASANT RUN RESORT



NO.	REVISIONS	BY	DATE

PREPARED UNDER THE SUPERVISION OF:
JAMES J. BERNAHL
 062-044133 11/30/2011
 P.E. NO. DATE
 DRAWN CHECKED



CITY OF ST. CHARLES
ENGINEERING DEPARTMENT
 2 EAST MAIN STREET, ST. CHARLES, ILLINOIS 60174 (630) 377-4486

PHEASANT RUN WATER MAIN REPLACEMENT
 KAUTZ ROAD TO PHEASANT RUN ENTRANCE

PROJECT NO.
 DATE: JUNE 4, 2010
 SCALE: 1"=30'
 FILE: PHEASANT RUN W/M-SHEET 194JDN
SHEET 194 of 647