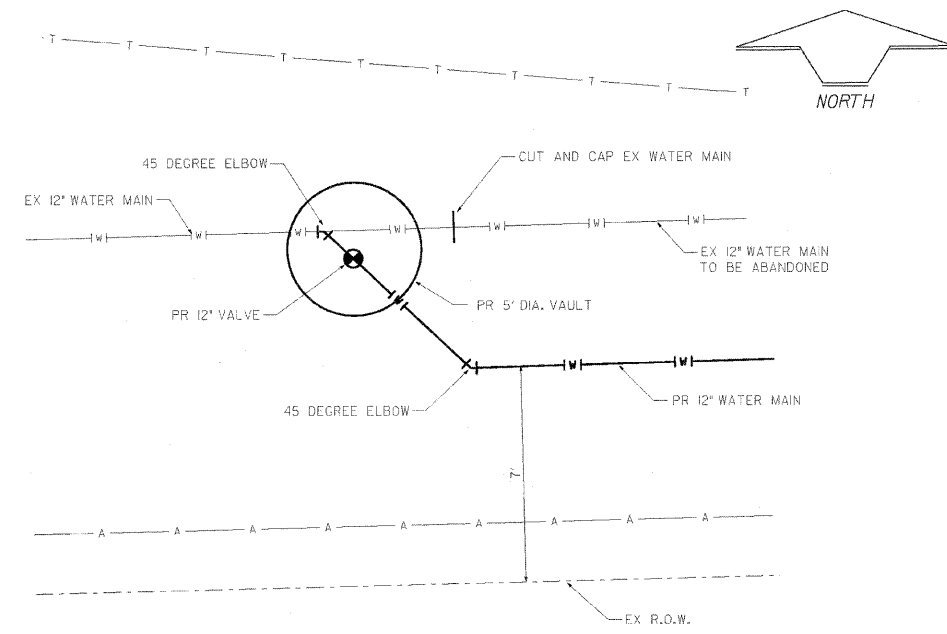
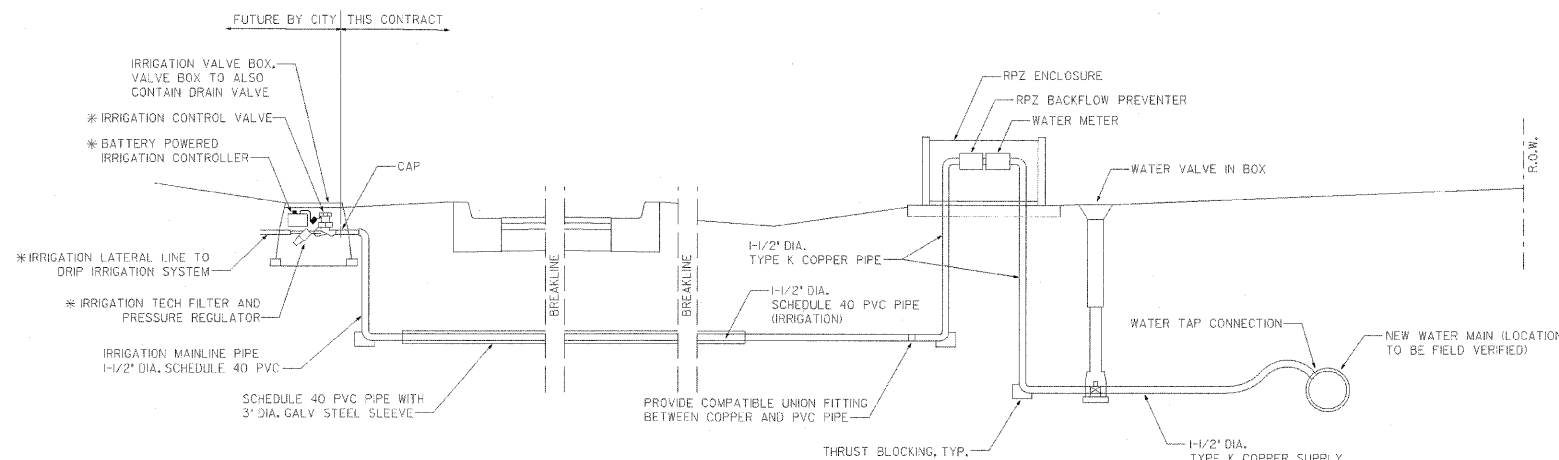


PROFILE: HORZ. 1"=20'  
VERT. 1"=5'

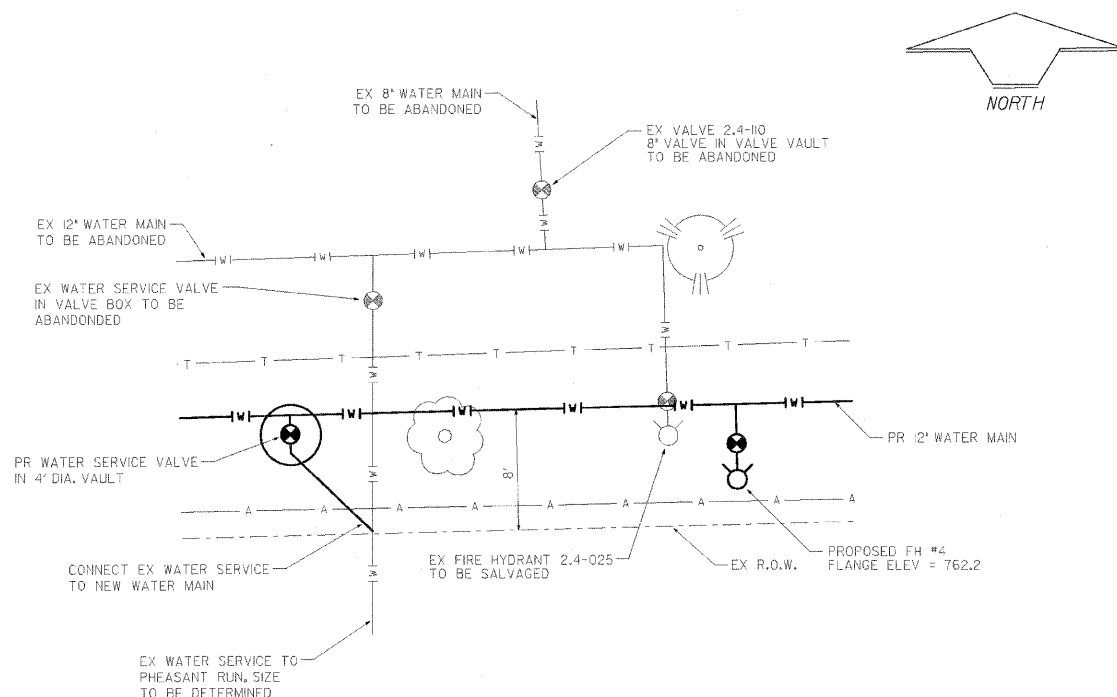
WATER MAIN CROSSING PROFILE - STA 3301+00



DETAIL "A"  
NOT TO SCALE



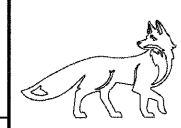
SCHEMATIC IRRIGATION SUPPLY SYSTEM DETAIL  
NOT TO SCALE



DETAIL "B"  
NOT TO SCALE

NO.	REVISIONS	BY	DATE
1.	ADDED IRRIGATION SYSTEM PIPE SIZES	B.H.	4-25-11

PREPARED UNDER THE SUPERVISION OF:	
JAMES J. BERNAHL	
062-044133	11/30/2011
P.E. NO.	DATE
DRAWN	CHECKED



**CITY OF ST. CHARLES**  
ENGINEERING DEPARTMENT  
2 EAST MAIN STREET, ST. CHARLES, ILLINOIS 60174 (630) 377-4486

**PHEASANT RUN WATER MAIN REPLACEMENT**  
KAUTZ ROAD TO PHEASANT RUN ENTRANCE

PROJECT NO.	02-003 C
DATE	JUNE 4, 2010
SCALE	1" = 30'
FILE	PHEASANT RUN WM-SHEET 41.DWG
<b>SHEET</b>	<b>196 of 6</b>