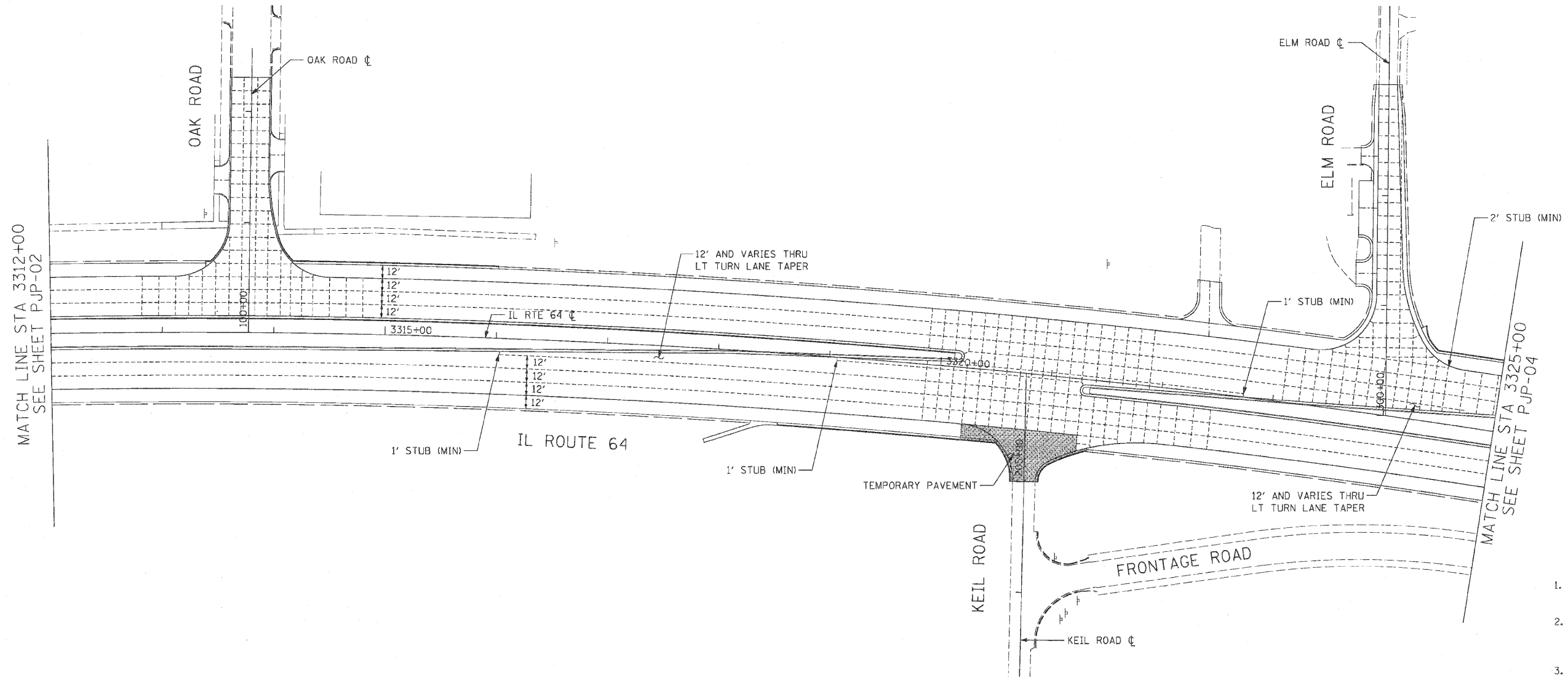


F.A.P. RTE.	SECTION	COUNTY	TOTAL SHEETS	SHEET NO.
307	130 R-2	DUPAGE, KANE	647	251
STA. 3312+00		TO STA. 3325+00		
FED. ROAD DIST. NO.		ILLINOIS FED. AID PROJECT		

62410



NOTES:

1. FOR GEOMETRICS SEE INTERSECTION DETAIL SHEETS.
2. LONGITUDINAL AND TRANSVERSE JOINTS SHALL BE IN ACCORDANCE WITH STANDARD 420001.
3. JOINTED PORTLAND CEMENT CONCRETE PAVEMENT SHALL BE IN ACCORDANCE WITH STANDARDS 420101 AND 420106.
4. PCC SHOULDER JOINTING SHALL BE IN ACCORDANCE WITH STANDARD 483001.
5. CONTRACTION JOINT SPACING IS 15' UNLESS NOTED.
6. LONGITUDINAL JOINT SPACING IS 12' UNLESS NOTED.

PJP-03



REVISIONS	
NAME	DATE

ILLINOIS DEPARTMENT OF TRANSPORTATION
 F.A.P. ROUTE 307 (ILLINOIS ROUTE 64)

PAVEMENT JOINTING PLAN
 IL ROUTE 64
 STA. 3312+00 TO STA. 3325+00

SCALE: VERT: NONE
 HORIZ: 1"=50'
 DATE: NOVEMBER 1, 2011
 DRAWN BY: AFC
 CHECKED BY: NJH